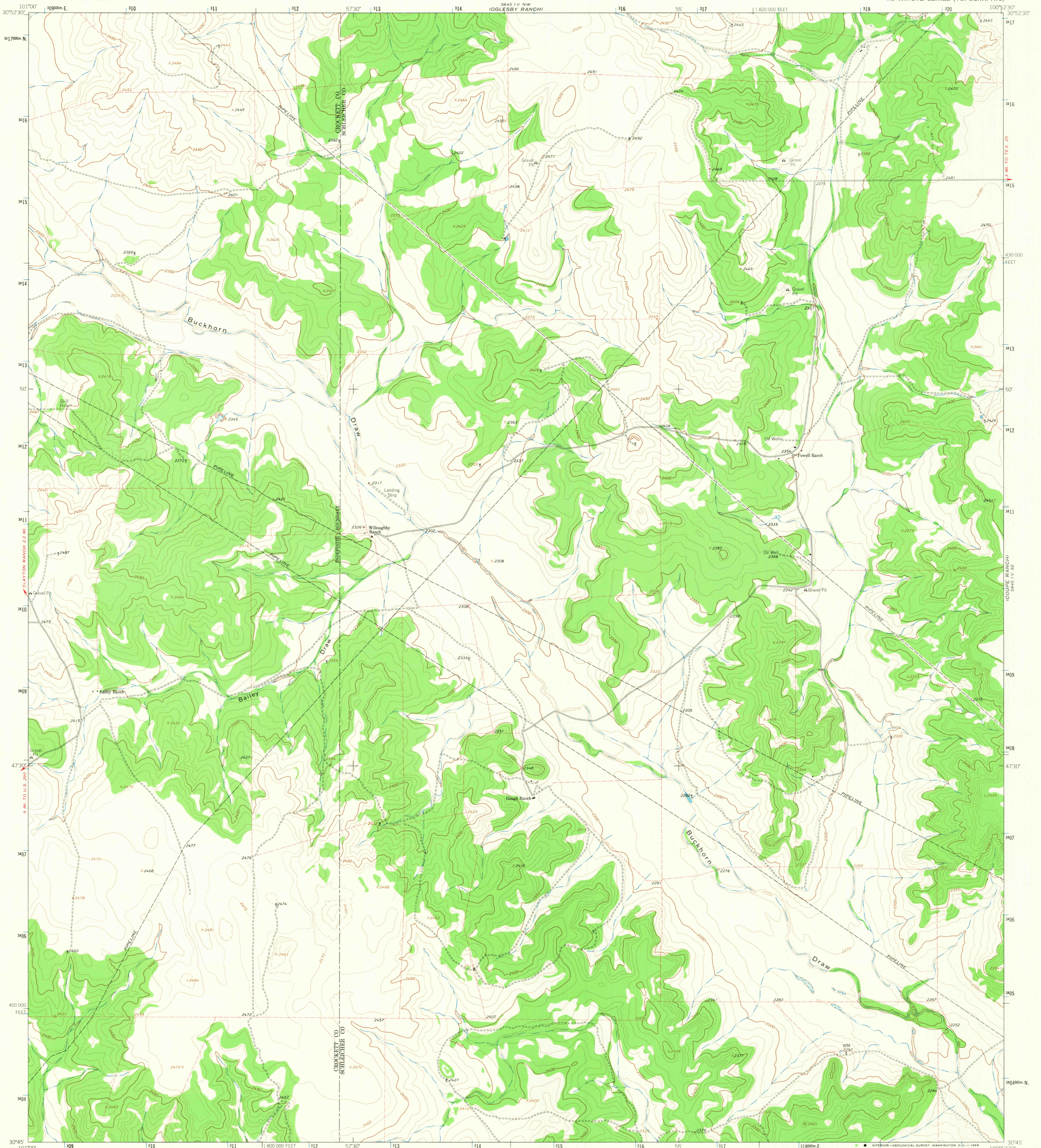
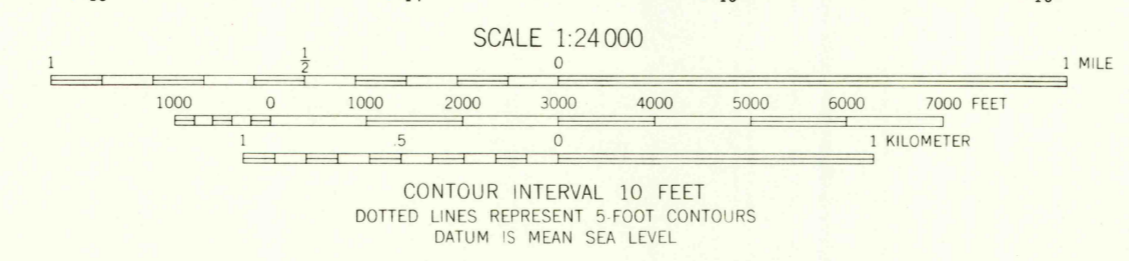
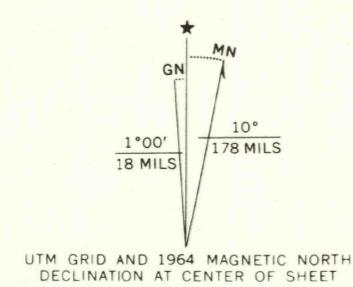


5845 IV NW
MOORE RANCH



Mapped, edited, and published by the Geological Survey
Control by USGS and USC&GS
Topography by photogrammetric methods from aerial photographs taken 1963. Field checked 1964
Polyconic projection. 1927 North American datum
10,000 foot grid based on Texas coordinate system, central zone
1000 meter Universal Transverse Mercator grid ticks, zone 14, shown in blue
Fine red dashed lines indicate selected fence lines



ROAD CLASSIFICATION
Light-duty ———— Unimproved dirt - - - - -



U.S.G.S.
TOPOGRAPHIC DIVISION

BAILEY DRAW, TEX.
N3045-W10052.5/7.5
1964
AMS 5845 IV SW - SERIES V882

THIS MAP COMPLIES WITH NATIONAL MAP ACCURACY STANDARDS
FOR SALE BY U. S. GEOLOGICAL SURVEY, DENVER, COLORADO 80225, OR WASHINGTON, D. C. 20242
A FOLDER DESCRIBING TOPOGRAPHIC MAPS AND SYMBOLS IS AVAILABLE ON REQUEST

2210
JAN 21 1967