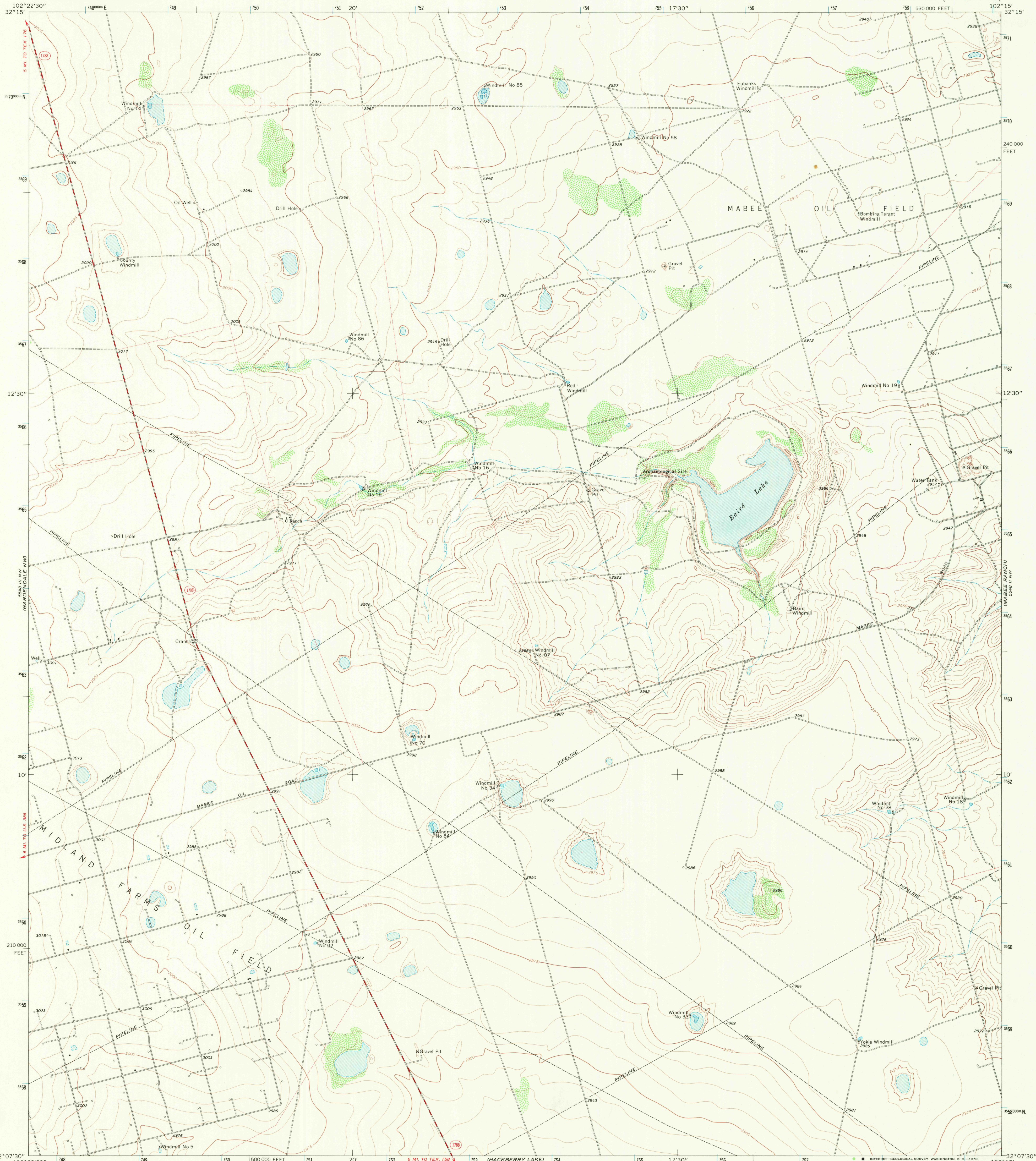
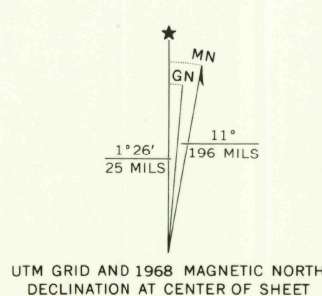


UNITED STATES  
DEPARTMENT OF THE INTERIOR  
GEOLOGICAL SURVEY

BAIRD LAKE QUADRANGLE  
TEXAS-ANDREWS CO.  
7.5 MINUTE SERIES (TOPOGRAPHIC)



Mapped, edited, and published by the Geological Survey  
Control by USGS and USC&GS  
Planimetry by photogrammetric methods from aerial photographs  
taken 1966. Topography by planetable surveys 1968  
Polyconic projection. 1927 North American datum  
10,000-foot grid based on Texas coordinate system,  
north central zone  
1000-meter Universal Transverse Mercator grid ticks,  
zone 13, shown in blue  
Fine red dashed lines indicate selected fence lines



SCALE 1:24,000  
1 0 1000 2000 3000 4000 5000 6000 7000 FEET  
1 KILOMETER  
CONTOUR INTERVAL 5 FEET  
DATUM IS MEAN SEA LEVEL

ROAD CLASSIFICATION  
Secondary highway, all weather, Light-duty road, all weather,  
hard surface improved surface  
Unimproved road, fair or dry  
weather  
State Route



U.S.G.S.  
FILE COPY  
TOPOGRAPHIC DIVISION

BAIRD LAKE, TEX.  
N3207.5-W10215/7.5  
1968  
AMS 5548 III NE-SERIES V882

OCT 1 1970

THIS MAP COMPLIES WITH NATIONAL MAP ACCURACY STANDARDS  
FOR SALE BY U. S. GEOLOGICAL SURVEY, DENVER, COLORADO 80225, OR WASHINGTON, D. C. 20242  
A FOLDER DESCRIBING TOPOGRAPHIC MAPS AND SYMBOLS IS AVAILABLE ON REQUEST