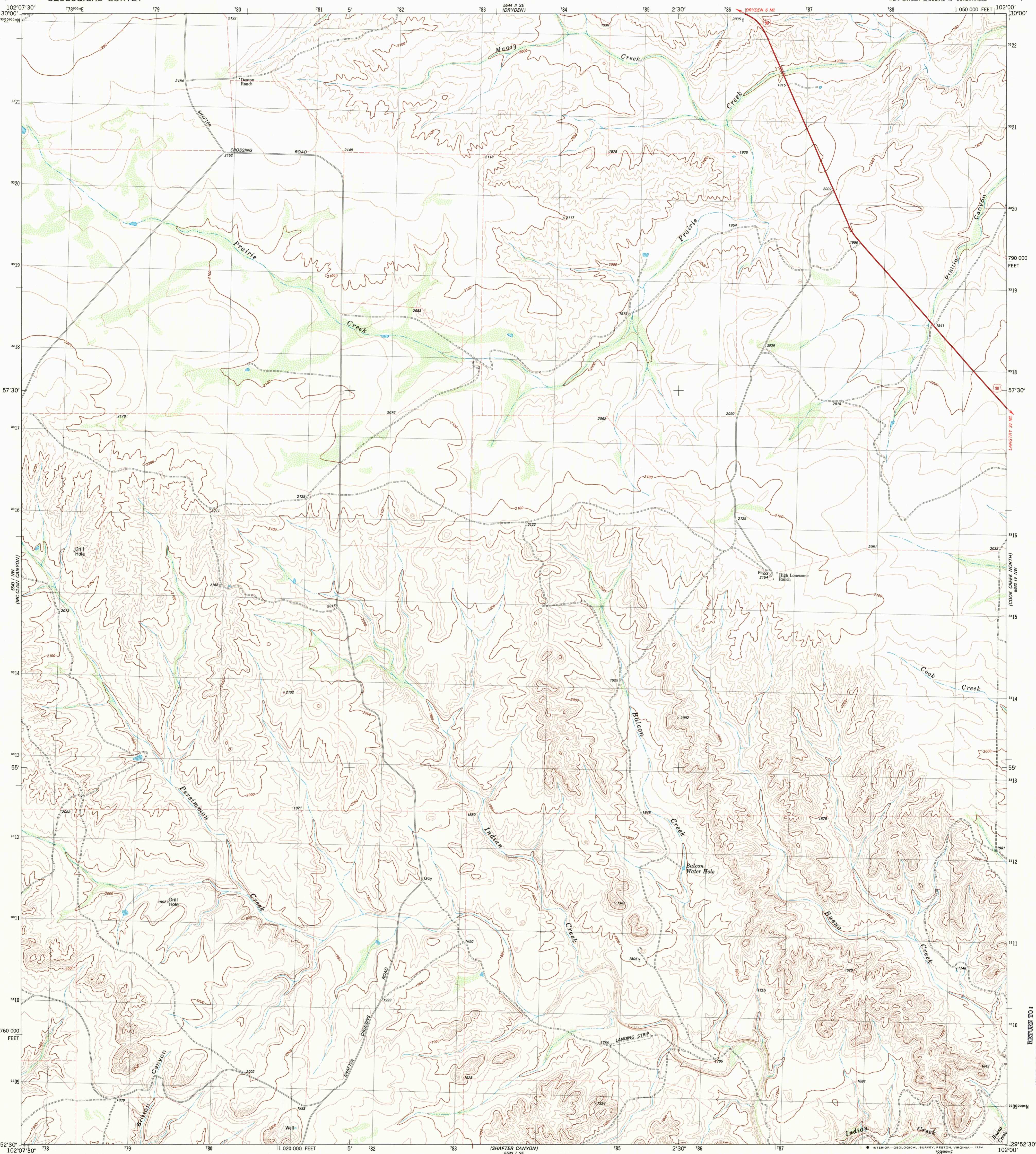
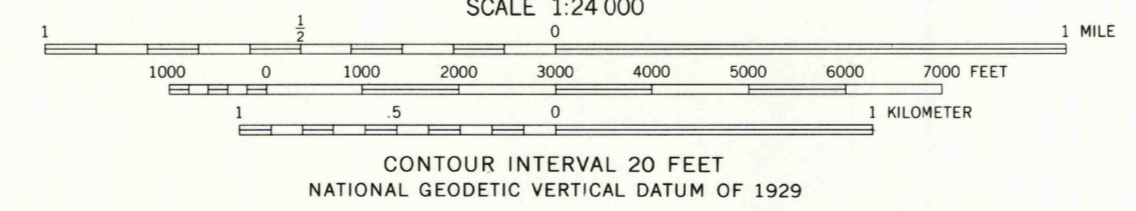
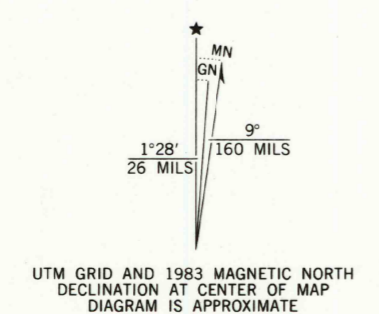


5544 # SW
(MC CLAW CANYON)



Maped, edited, and published by the Geological Survey
Control by USGS and NOS/NOAA
Topography by photogrammetric methods from aerial photographs taken 1974. Field checked 1976. Map edited 1983
Projection and 10,000-foot grid ticks: Texas coordinate system, south central zone (Lambert conformal conic) 1000-meter Universal Transverse Mercator grid, zone 13 1927 North American Datum
To place on the predicted North American Datum 1983 move the projection lines 17 meters south and 39 meters east as shown by dashed corner ticks
Fine red dashed lines indicate selected fence lines



ROAD CLASSIFICATION

Primary highway, hard surface	Light-duty road, hard or improved surface
Secondary highway, hard surface	Unimproved road
Interstate Route	U. S. Route
	State Route

BALCON CREEK, TEX.
NE/4 DRYDEN CROSSING 15' QUADRANGLE
N2952.5-W10200/7.5

THIS MAP COMPLIES WITH NATIONAL MAP ACCURACY STANDARDS
FOR SALE BY U. S. GEOLOGICAL SURVEY, DENVER, COLORADO 80225, OR RESTON, VIRGINIA 22092
A FOLDER DESCRIBING TOPOGRAPHIC MAPS AND SYMBOLS IS AVAILABLE ON REQUEST

2902-444

1983
DMA 5543 1 NE-SERIES V882

RETURN TO:
USGS AND HISTORICAL MAP ARCHIVES

5544 # SW
(MC CLAW CANYON)

5544 # SW
(MC CLAW CANYON)