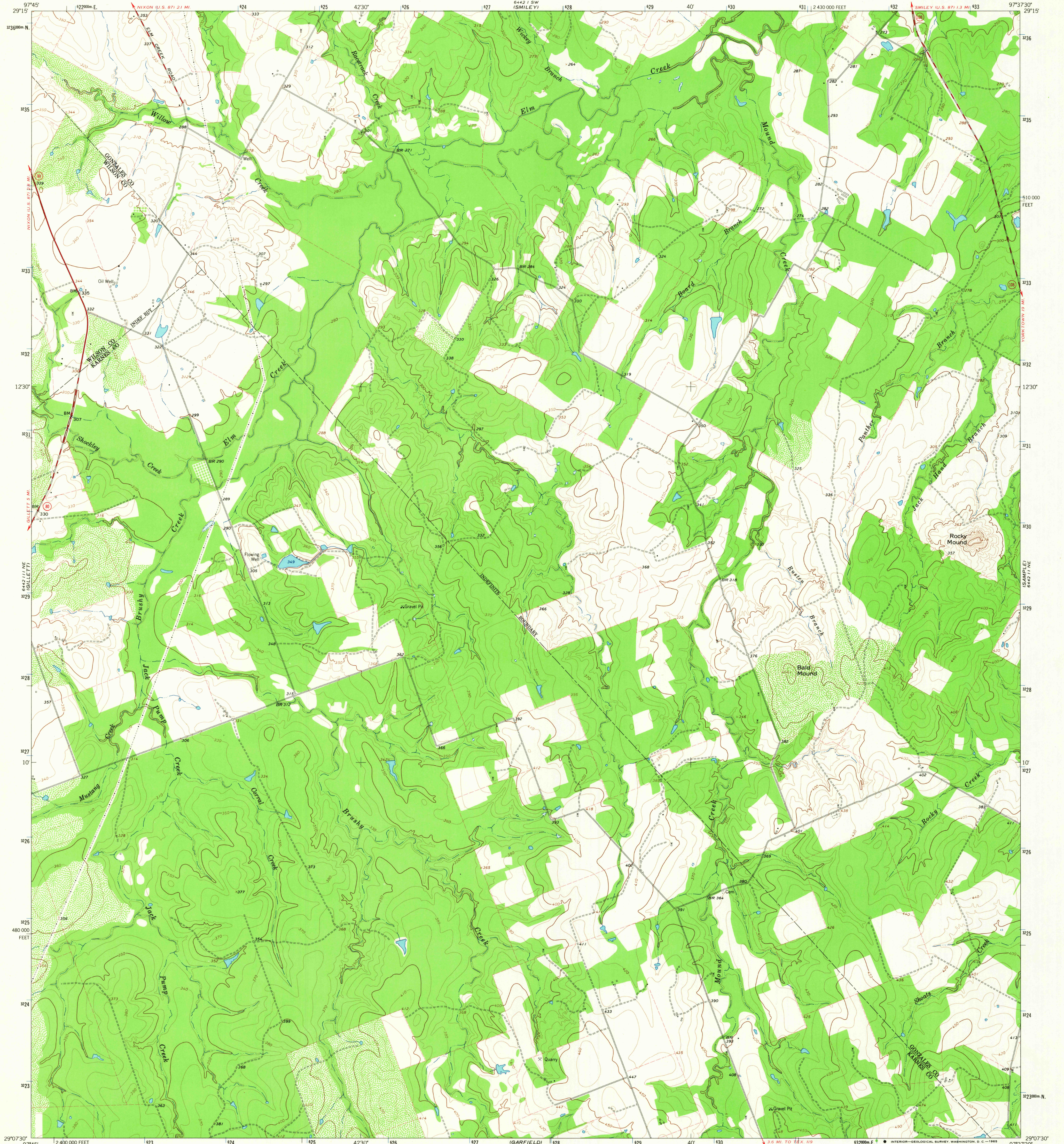


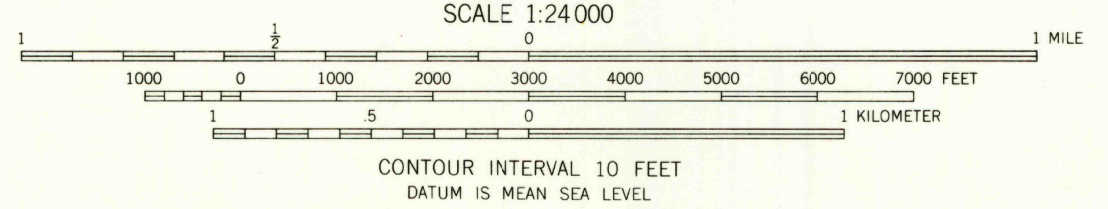
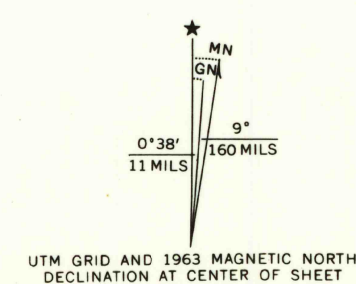
6442 11 SE
NIXON
6442 11 NE
GILLETTE
6442 11 NE
GILLETTE
6442 11 SE
NEW DAVE
6442 11 SE

UNITED STATES
DEPARTMENT OF THE INTERIOR
GEOLOGICAL SURVEY

BALD MOUND QUADRANGLE
TEXAS
7.5 MINUTE SERIES (TOPOGRAPHIC)



Mapped, edited, and published by the Geological Survey
Control by USGS and USC&GS
Topography by photogrammetric methods from aerial
photographs taken 1960. Field checked 1963
Polyconic projection. 1927 North American datum
10,000 foot grid based on Texas coordinate system, south central zone
1000 meter Universal Transverse Mercator grid ticks,
zone 14, shown in blue
Fine red dashed lines indicate selected fence lines



ROAD CLASSIFICATION

Heavy-duty	Light-duty
Medium-duty	Unimproved dirt
State Route	



U.S.G.S.
FILE COPY
TOPOGRAPHIC DIVISION

BALD MOUND, TEX.
N2907.5 - W9737.5/7.5
1963

DEC 17 1965

THIS MAP COMPLIES WITH NATIONAL MAP ACCURACY STANDARDS
FOR SALE BY U. S. GEOLOGICAL SURVEY, DENVER, COLORADO 80225, OR WASHINGTON, D. C. 20242
A FOLDER DESCRIBING TOPOGRAPHIC MAPS AND SYMBOLS IS AVAILABLE ON REQUEST

AMS 6442 11 NW - SERIES V882

1950