

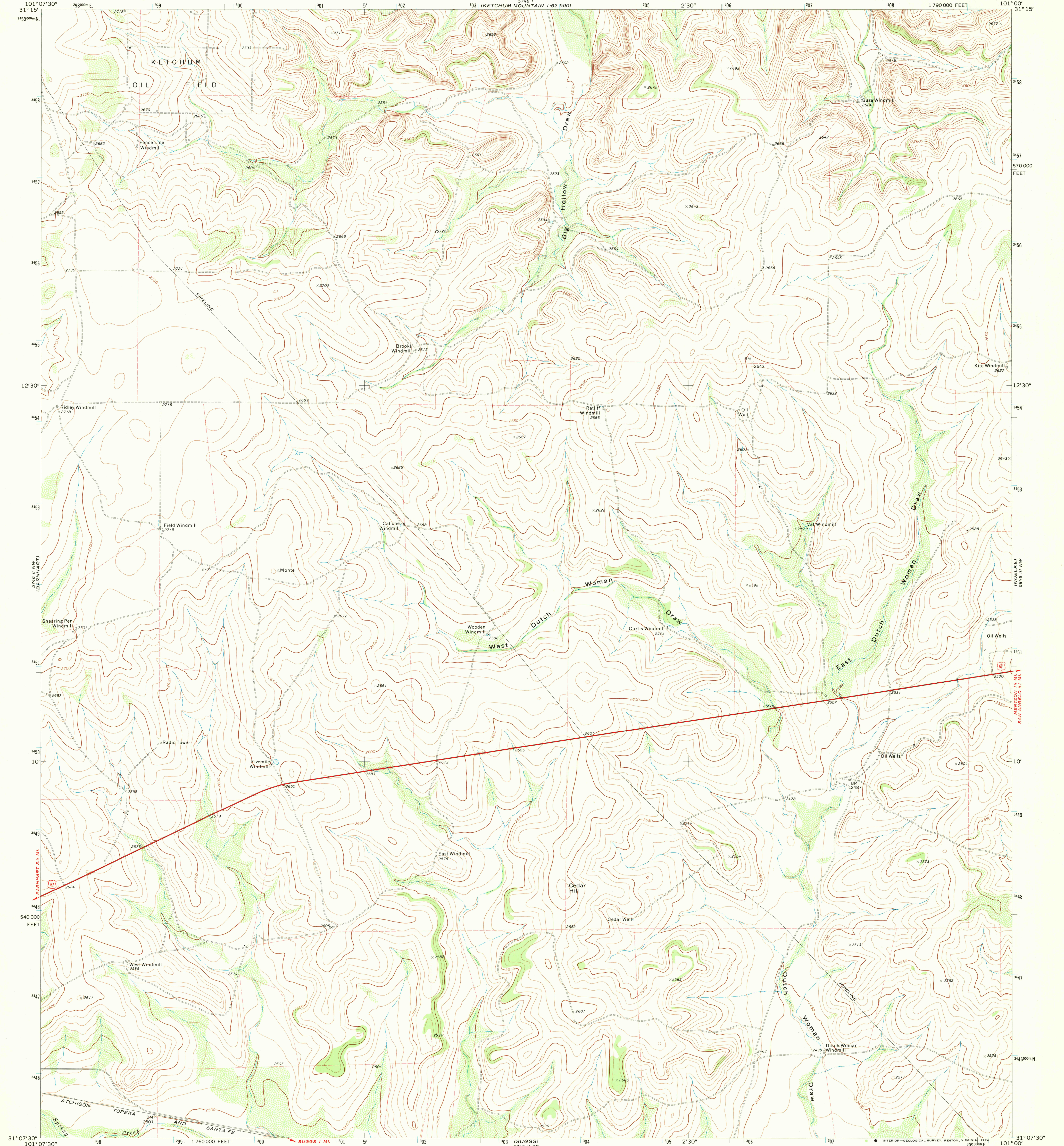
KETCHUM MOUNTAIN
5746 I
1:62 500

UNITED STATES
DEPARTMENT OF THE INTERIOR
GEOLOGICAL SURVEY

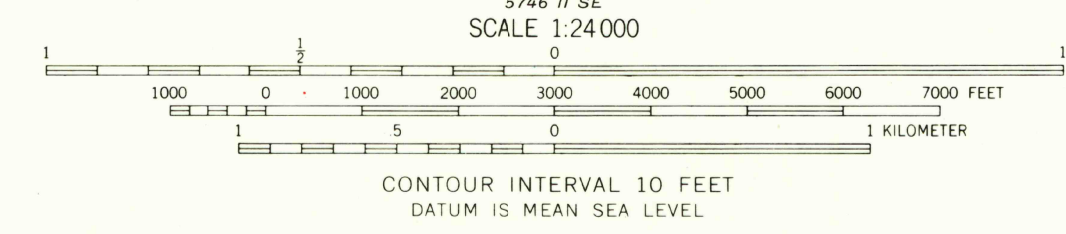
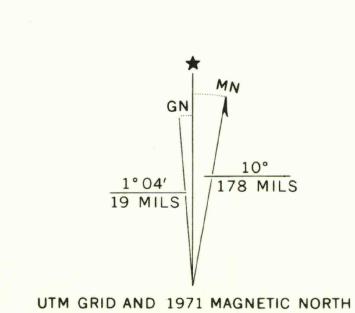
STATE OF TEXAS
TEXAS WATER DEVELOPMENT BOARD

BARNHART NE QUADRANGLE
TEXAS—IRON CO.
7.5 MINUTE SERIES (TOPOGRAPHIC)
NE/4 BARNHART 15' QUADRANGLE
1:790 000 FEET

SEE IV SW
MERIDION SW



Mapped, edited, and published by the Geological Survey
Control by USGS and USC&GS
Topography by photogrammetric methods from aerial
photographs taken 1970. Field checked 1971
Projection and 10,000-foot grid ticks: Texas
coordinate system, central zone (Lambert conformal conic)
1000-meter Universal Transverse Mercator grid ticks,
zone 14, shown in blue. 1927 North American datum
Fine red dashed lines indicate selected fence lines



ROAD CLASSIFICATION	
Primary highway, hard surface	Light-duty road, hard or improved surface
Secondary highway, hard surface	Unimproved road
Interstate Route	U. S. Route
	State Route

USGS
Historical File
Topographic

BARNHART NE, TEX.
NE/4 BARNHART 15' QUADRANGLE
N3107.5—W10100/7.5
1971

AMS 5746 II NE—SERIES V882

THIS MAP COMPLIES WITH NATIONAL MAP ACCURACY STANDARDS
FOR SALE BY U. S. GEOLOGICAL SURVEY, DENVER, COLORADO 80225, OR RESTON, VIRGINIA 22092
A FOLDER DESCRIBING TOPOGRAPHIC MAPS AND SYMBOLS IS AVAILABLE ON REQUEST

JUN 03 1974

2195