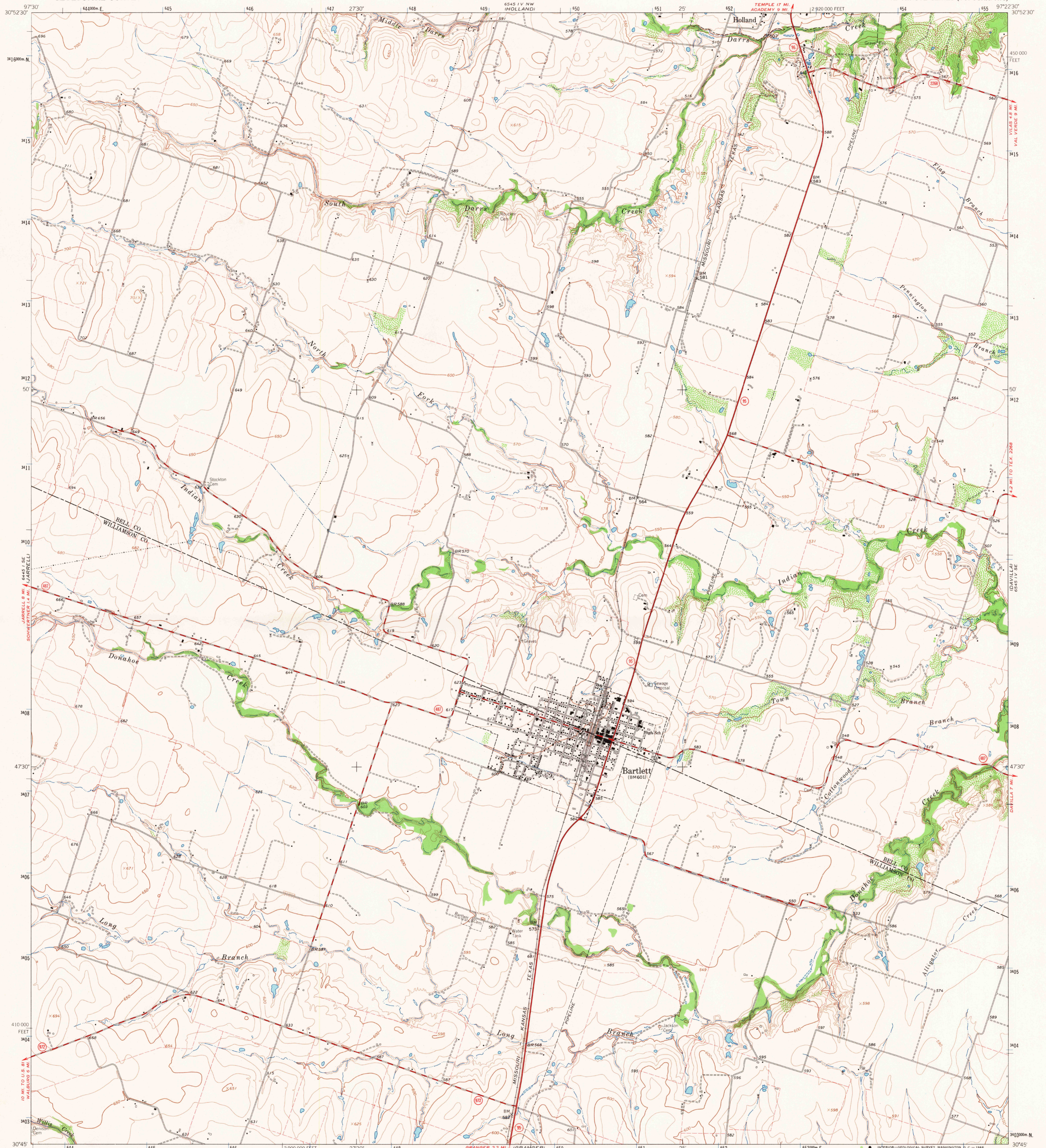


645 N  
162 500

UNITED STATES  
DEPARTMENT OF THE INTERIOR  
GEOLOGICAL SURVEY

BARTLETT QUADRANGLE  
TEXAS  
7.5 MINUTE SERIES (TOPOGRAPHIC)

645 N  
162 500  
LITTLE RIVER



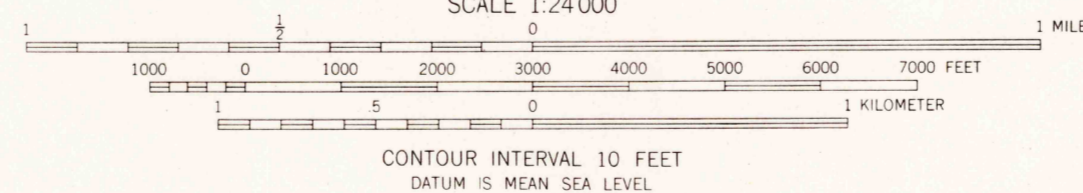
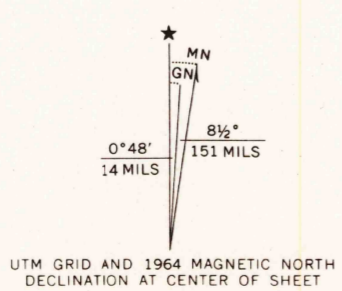
Mapped, edited, and published by the Geological Survey

Control by USGS and USC&GS

Topography by photogrammetric methods from aerial photographs taken 1963. Field checked 1964

Polyconic projection 1927 North American datum  
10,000-foot grid based on Texas coordinate system, central zone  
1000-meter Universal Transverse Mercator grid ticks,  
zone 14, shown in blue

Fine red dashed lines indicate selected fence lines



ROAD CLASSIFICATION	
Heavy-duty	Light-duty
Medium-duty	Unimproved dirt
State Route	



U.S.G.S.  
FILE COPY  
TOPOGRAPHIC DIVISION

BARTLETT, TEX.  
N3045-W9722.5/7.5  
1964

2750  
NOV 2 1966

THIS MAP COMPLIES WITH NATIONAL MAP ACCURACY STANDARDS  
FOR SALE BY U. S. GEOLOGICAL SURVEY, DENVER, COLORADO 80225, OR WASHINGTON, D. C. 20242  
A FOLDER DESCRIBING TOPOGRAPHIC MAPS AND SYMBOLS IS AVAILABLE ON REQUEST

AMS 6545 1V SW - SERIES V882