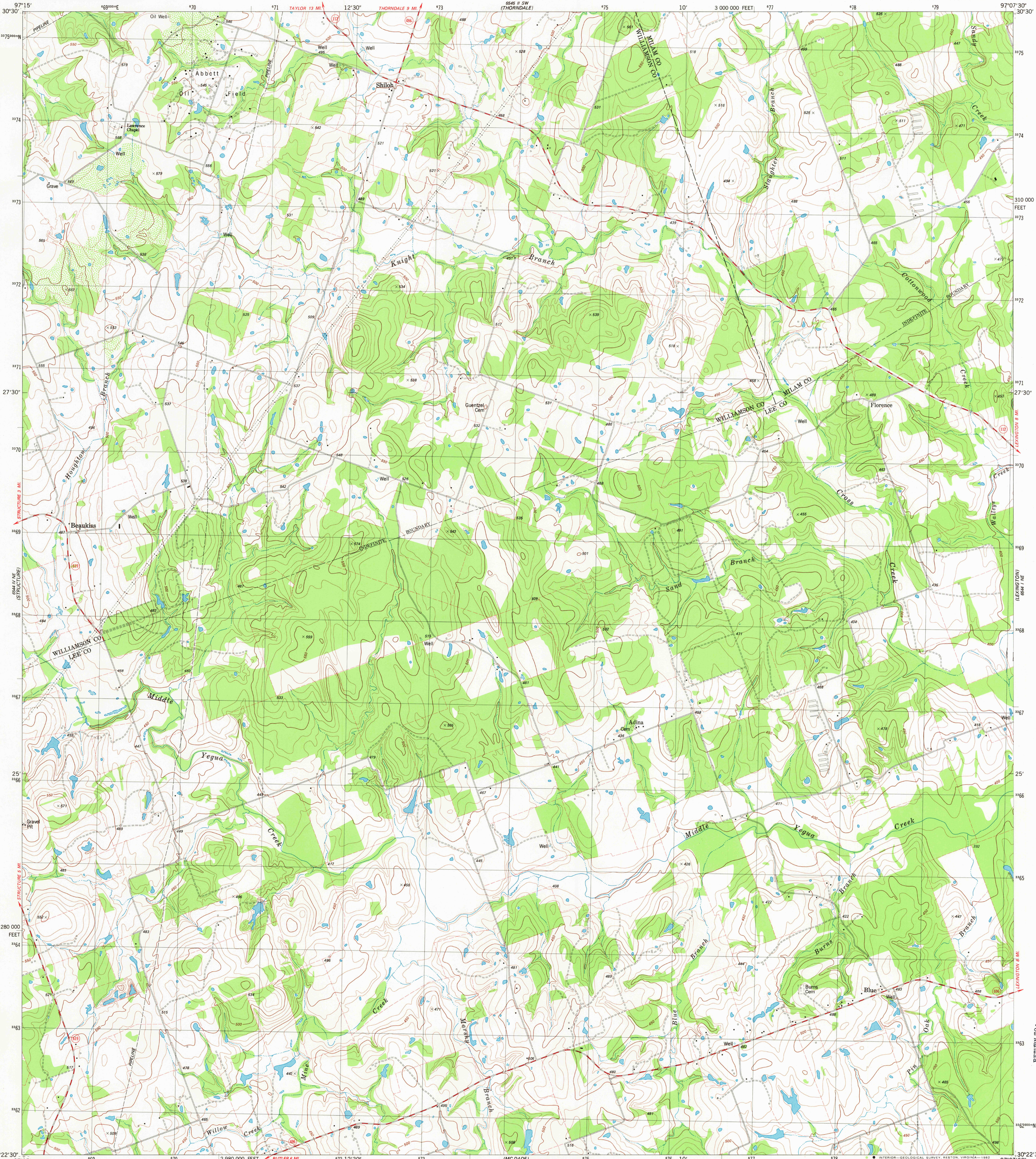


664 117 SE
7744 117 SE

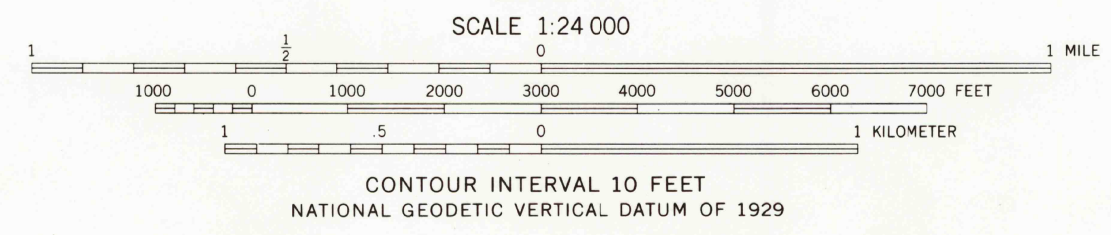
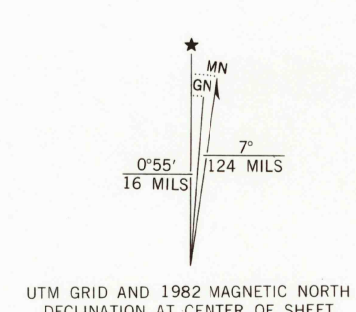
UNITED STATES
DEPARTMENT OF THE INTERIOR
GEOLOGICAL SURVEY

BEAUKISS QUADRANGLE
TEXAS
7.5 MINUTE SERIES (TOPOGRAPHIC)
NW/4 LEXINGTON 15' QUADRANGLE

664 117 SE
7744 117 SE



Mapped, edited, and published by the Geological Survey
Control by USGS and NOS/NOAA
Topography by photogrammetric methods from aerial photographs
taken 1974. Field checked 1976. Map edited 1982
Projection and 10,000-foot grid ticks: Texas
coordinate system, central zone (Lambert conformal conic)
1000-meter Universal Transverse Mercator grid, zone 14
1927 North American datum
To place on the predicted North American Datum 1983
move the projection lines 18 meters south and
27 meters east as shown by dashed corner ticks
Fine red dashed lines indicate selected fence lines



ROAD CLASSIFICATION

Primary highway, hard surface	Light-duty road, hard or improved surface
Secondary highway, hard surface	Unimproved road
Interstate Route	U. S. Route
	State Route

THIS MAP COMPLIES WITH NATIONAL MAP ACCURACY STANDARDS
FOR SALE BY U. S. GEOLOGICAL SURVEY, DENVER, COLORADO 80225, OR RESTON, VIRGINIA 22092
A FOLDER DESCRIBING TOPOGRAPHIC MAPS AND SYMBOLS IS AVAILABLE ON REQUEST

3097-143

BEAUKISS, TEX.
NW/4 LEXINGTON 15' QUADRANGLE
3022.5-W9707.5/7.5
1982
DMA 6544 1 NW-SERIES V882

RETURN TO:
USGS AND HISTORICAL MAP ARCHIVES

7/21/82
2000