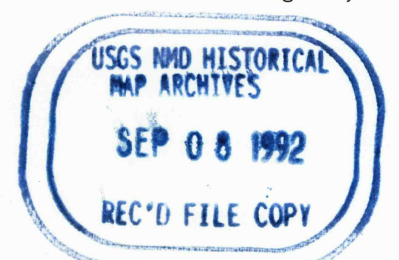
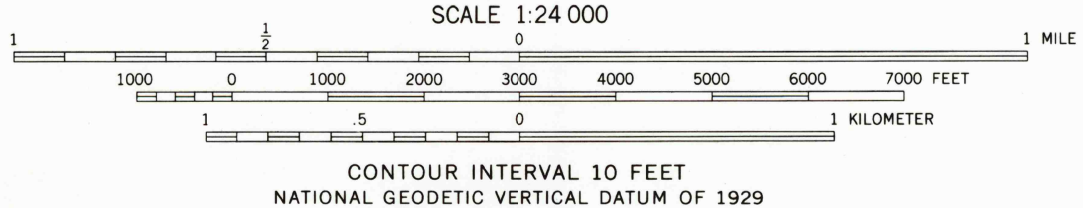


Falcon Reservoir land on the United States side below elevation of 307 feet is owned by the United States. The United States has a flowage easement for those lands between the elevations of 307 and 314 feet.

Mapped, edited, and published by the Geological Survey
Control by USGS, USC&GS, and International Boundary and
Water Commission
Topography by photogrammetric methods from aerial
photographs taken 1964. Field checked 1965
Polyconic projection. 1927 North American datum
10,000-foot grid based on Texas coordinate system,
south zone
1000-meter Universal Transverse Mercator grid ticks,
zone 14, shown in blue
Fine red dashed lines indicate selected fence lines
Areas covered by dashed light-blue pattern are subject
to controlled inundation

To place on the predicted North American Datum 1983
move the projection lines 31 meters south and
31 meters east as shown by dashed corner ticks



ROAD CLASSIFICATION
Light-duty ————— Unimproved dirt - - - - -

BECKWITH ARM, TEX.
N2637.5—W9907.5/7.5
1965
PHOTOINSPECTED 1980
DMA 6137 II NW—SERIES V882

2699-413
Map photoinspected 1980
No major culture or drainage changes observed