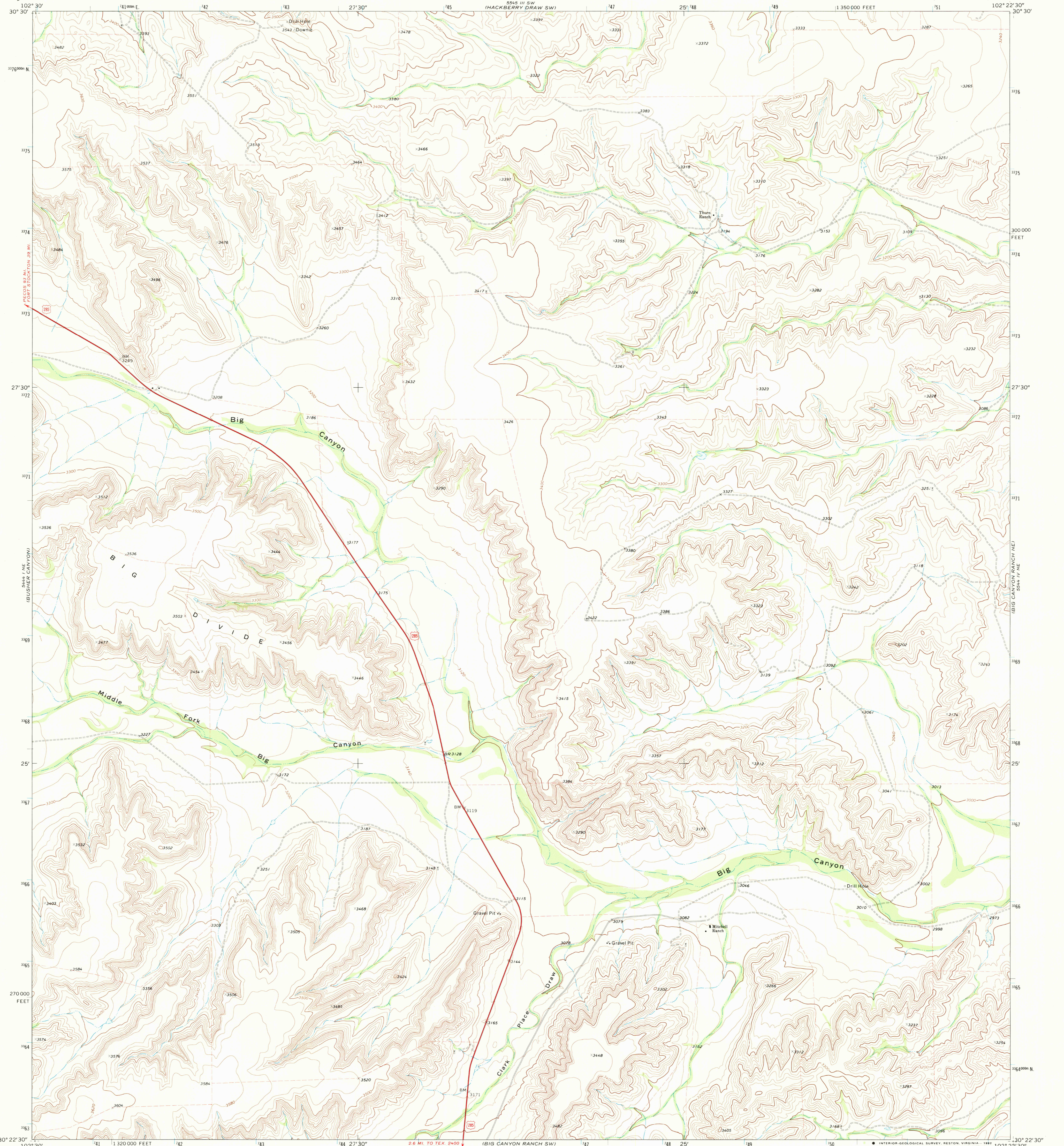


MOCK HOUSE DRAW

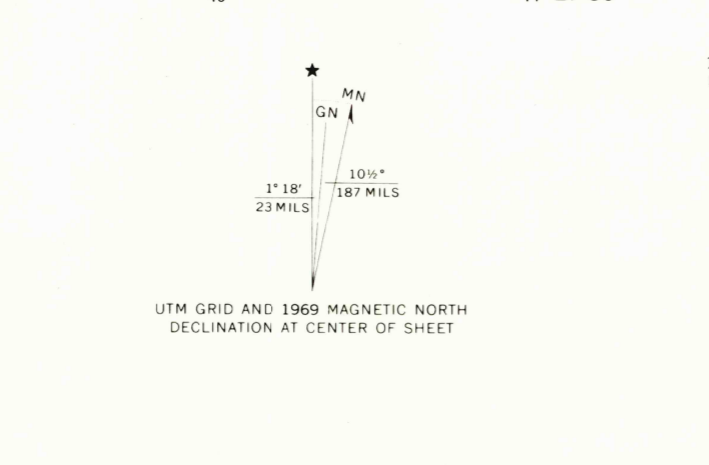
HACKBERRY DRAW SW

UNITED STATES  
DEPARTMENT OF THE INTERIOR  
GEOLOGICAL SURVEY

BIG CANYON RANCH NW QUADRANGLE  
TEXAS-PECOS CO.  
7.5 MINUTE SERIES (TOPOGRAPHIC)



Mapped, edited, and published by the Geological Survey  
Control by USGS and NOS/NOAA  
Topography by photogrammetric methods from aerial photographs taken 1968. Field checked 1969  
Polyconic projection. 1927 North American Datum  
10,000-foot grid based on Texas coordinate system, central zone  
1000-meter Universal Transverse Mercator grid ticks, zone 13, shown in blue  
The difference between 1927 North American Datum and North American Datum of 1983 (NAD 83) for 7.5 minute intersections is given in USGS Bulletin 1875. The NAD 83 is shown by dashed corner ticks  
Fine red dashed lines indicate selected fence lines



SCALE 1:24,000  
CONTOUR INTERVAL 20 FEET  
NATIONAL GEODETIC VERTICAL DATUM OF 1929  
THIS MAP COMPLIES WITH NATIONAL MAP ACCURACY STANDARDS FOR SALE BY U.S. GEOLOGICAL SURVEY  
DENVER, COLORADO 80225, OR RESTON, VIRGINIA 22092  
A FOLDER DESCRIBING TOPOGRAPHIC MAPS AND SYMBOLS IS AVAILABLE ON REQUEST

ROAD CLASSIFICATION  
Primary highway, all weather, hard surface  
Light-duty road, all weather, improved surface  
Unimproved road, fair or dry weather  
U.S. Route

TEXAS  
QUADRANGLE LOCATION

BIG CANYON RANCH NW, TEX.  
30102-D4-TF-024  
1969  
DMA 5544 IV NW-SERIES V882

USGS HISTORICAL MAP ARCHIVES  
APR 03 1992  
REC'D FILE COPY