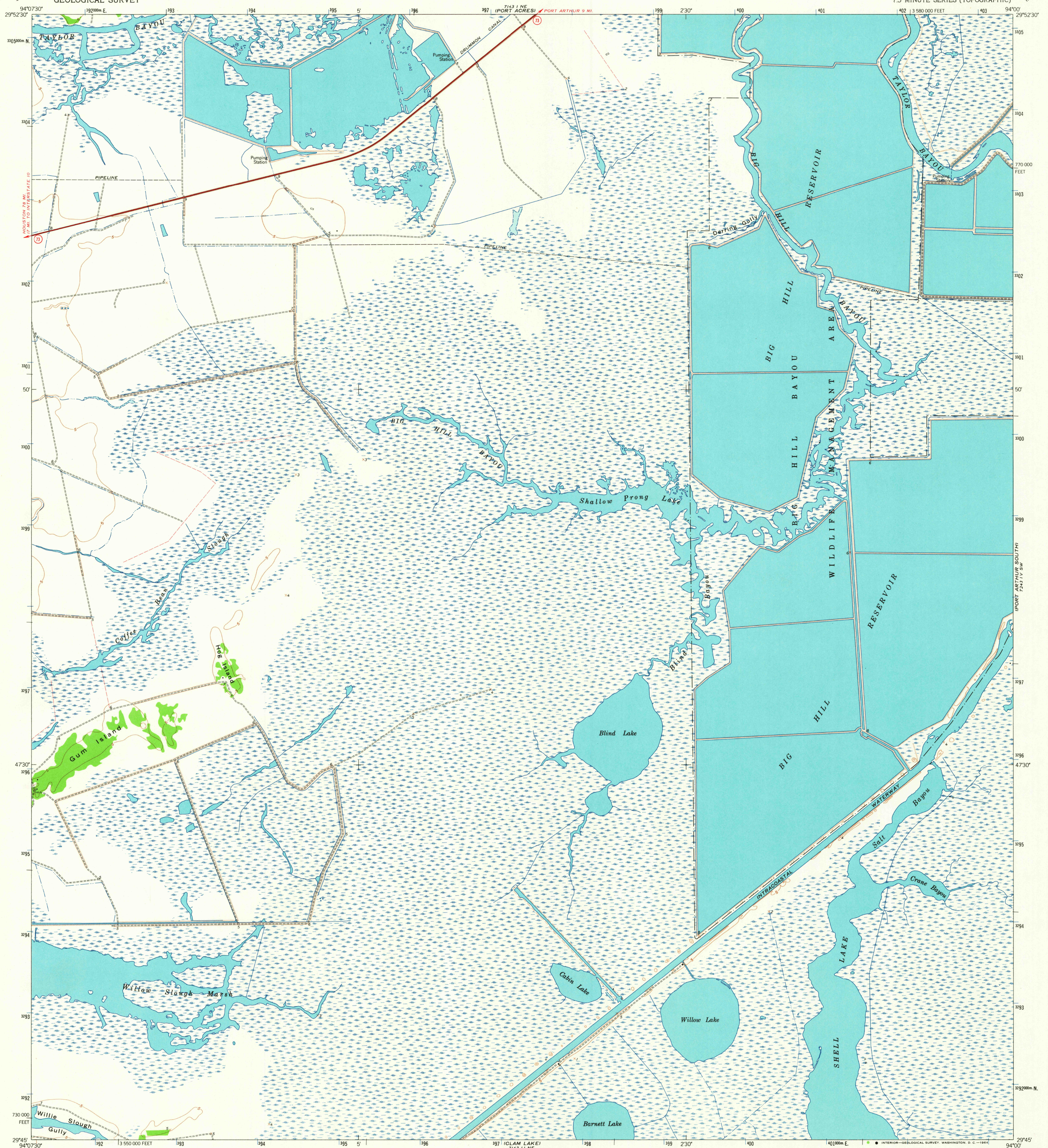
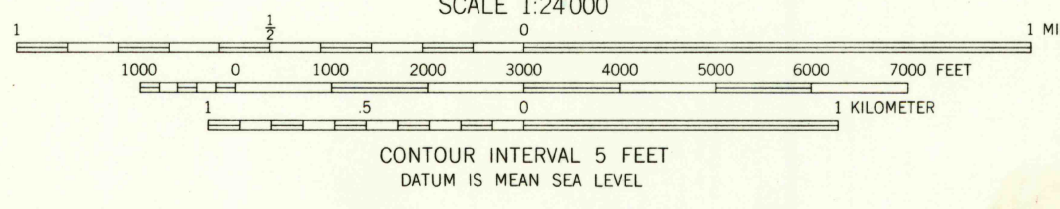
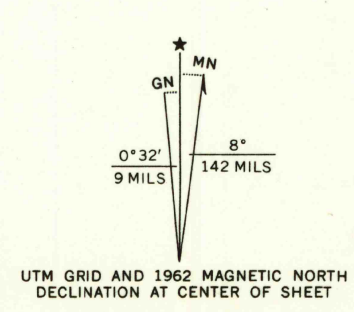


UNITED STATES  
DEPARTMENT OF THE INTERIOR  
GEOLOGICAL SURVEY

BIG HILL BAYOU QUADRANGLE  
TEXAS-JEFFERSON CO.  
7.5 MINUTE SERIES (TOPOGRAPHIC)



Mapped, edited, and published by the Geological Survey  
Control by USGS and USC&GS  
Planimetry by photogrammetric methods from aerial photographs taken 1960. Topography enlarged from 1:31 680-scale AMS map of Big Hill Bayou quadrangle. Original map by photogrammetric methods and planimetric surveys 1943. Revised 1962  
Polyconic projection. 1927 North American datum  
10,000-foot grid based on Texas coordinate system, south central zone  
1000-meter Universal Transverse Mercator grid ticks, zone 15, shown in blue  
Fine red dashed lines indicate selected fence lines



ROAD CLASSIFICATION

Heavy-duty	Unimproved dirt
State Route	

THIS MAP COMPLIES WITH NATIONAL MAP ACCURACY STANDARDS  
FOR SALE BY U.S. GEOLOGICAL SURVEY, DENVER 25, COLORADO OR WASHINGTON 25, D. C.  
A FOLDER DESCRIBING TOPOGRAPHIC MAPS AND SYMBOLS IS AVAILABLE ON REQUEST

U.S.G.S. FILE COPY TOPOGRAPHIC DIVISION  
BIG HILL BAYOU, TEX.  
N2945-W9400/7.5  
1962  
AMS 7143 I SE-SERIES V882

2590  
JUN 16 1964