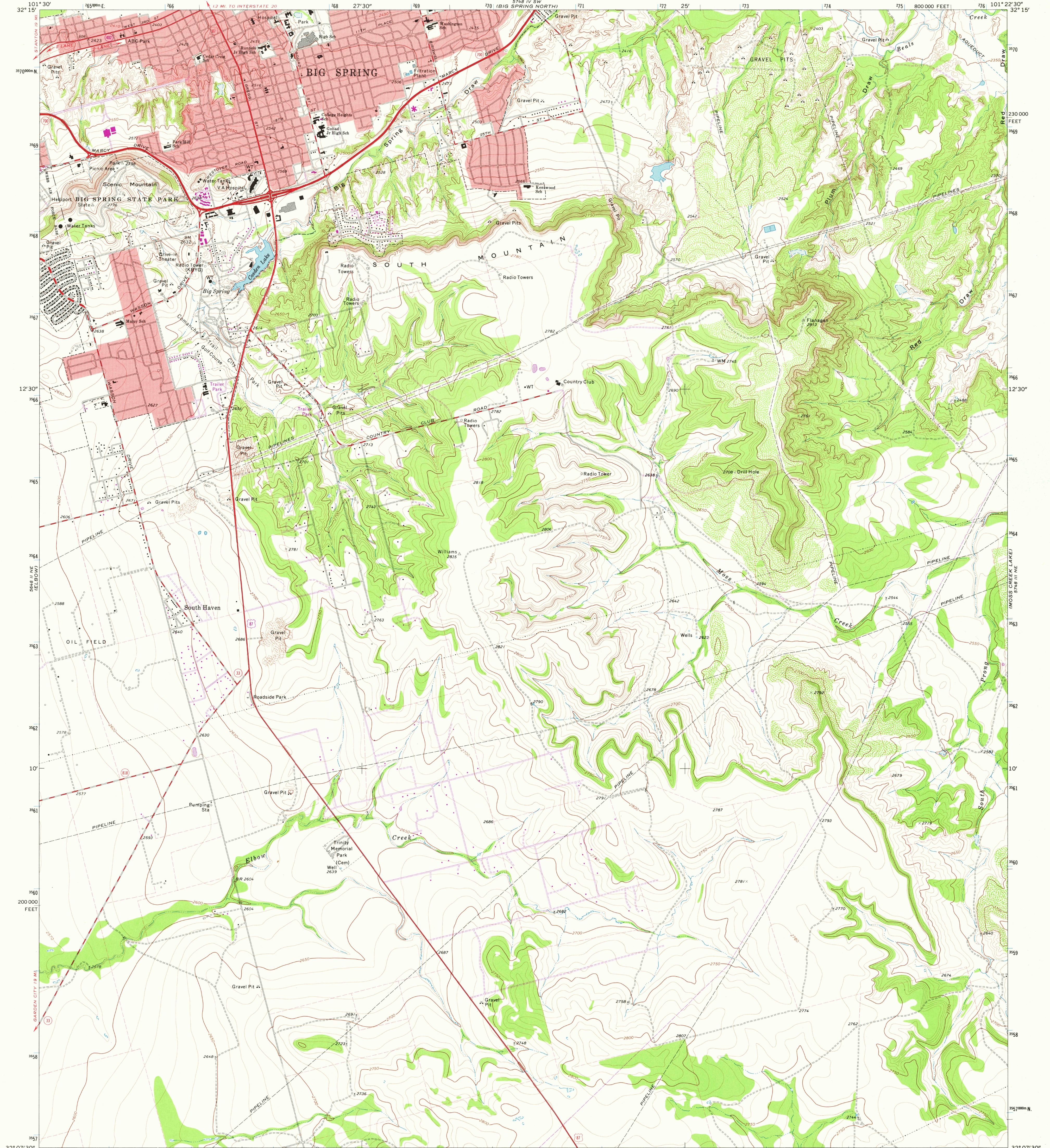


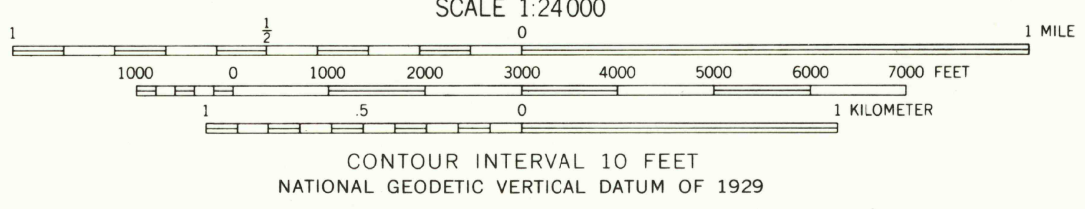
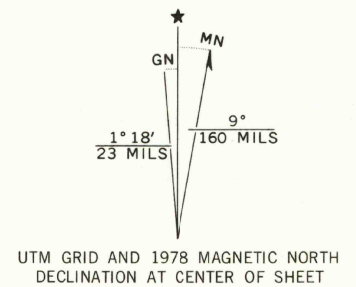
32° 07' 30" N  
101° 30' W



32° 07' 30" N  
101° 22' 30" W



Mapped, edited, and published by the Geological Survey  
Control by USGS and USC&GS  
Topography by photogrammetric methods from aerial photographs taken 1970. Field checked 1971.  
Projection and 10,000-foot grid ticks: Texas coordinate system, north central zone (Lambert conformal conic)  
1000 meter Universal Transverse Mercator grid ticks, zone 14, shown in blue. 1927 North American datum  
Red tint indicates areas in which only landmark buildings are shown  
Fine red dashed lines indicate selected fence lines  
There may be private inholdings within the boundaries of the National or State reservations shown on this map  
Revisions shown in purple compiled from aerial photographs taken 1976 and other source data. This information not field checked. Map edited 1978.



THIS MAP COMPLIES WITH NATIONAL MAP ACCURACY STANDARDS  
FOR SALE BY U. S. GEOLOGICAL SURVEY, DENVER, COLORADO 80225, OR RESTON, VIRGINIA 22092  
A FOLDER DESCRIBING TOPOGRAPHIC MAPS AND SYMBOLS IS AVAILABLE ON REQUEST



QUADRANGLE LOCATION  
3201-123

ROAD CLASSIFICATION

Primary highway, hard surface	Light-duty road, hard or improved surface
Secondary highway, hard surface	Unimproved road
Interstate Route	U. S. Route
	State Route

USGS  
Historical File  
Topographic Division

APR 11 1978  
BIG SPRING SOUTH, TEX.

N3207.5-W10122.5/7.5  
1971  
PHOTOREVISED 1978  
AMS 5748 III NW—SERIES V882

2450