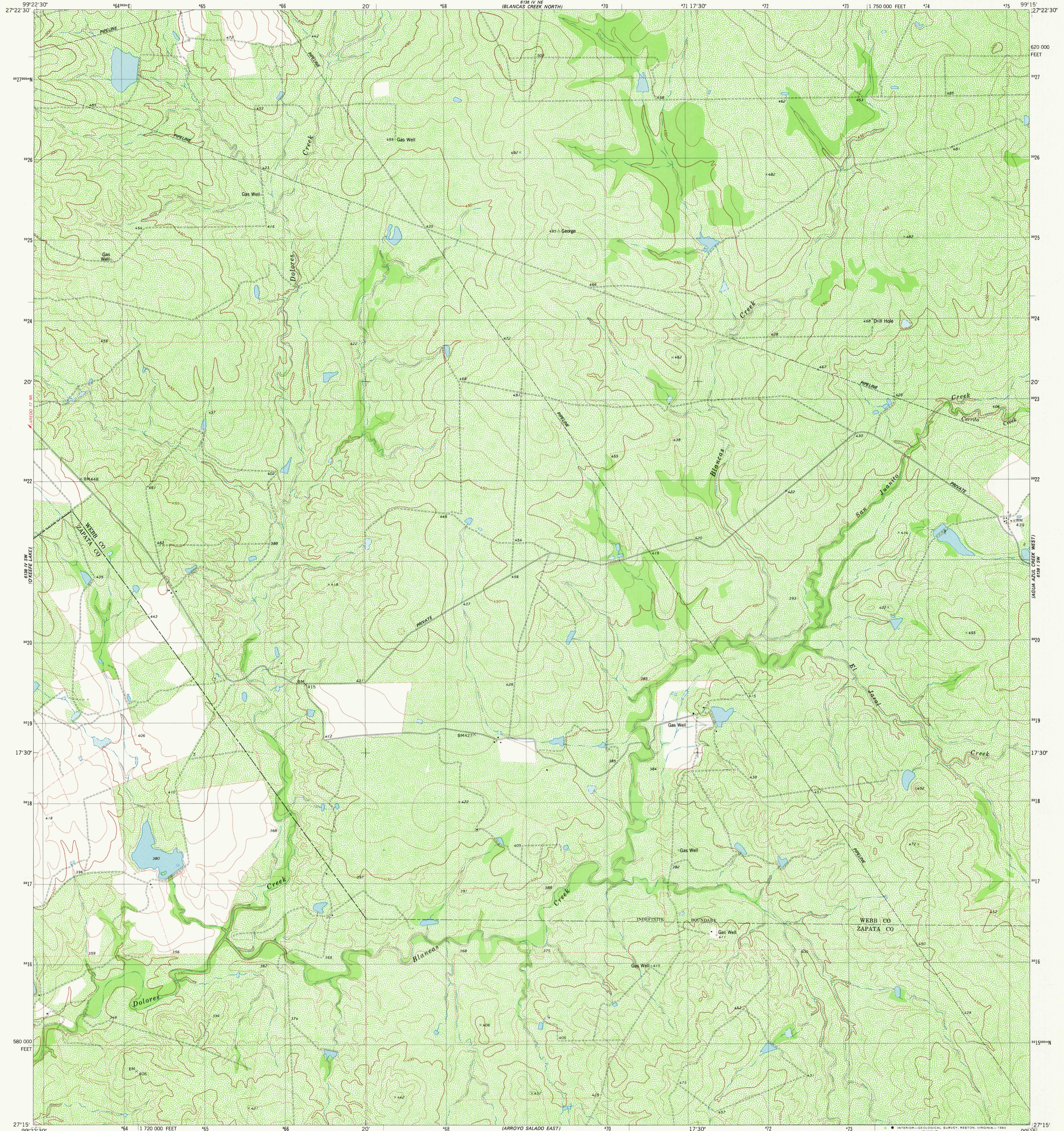


618 IV SW
(ARROYO SALADO WEST)

UNITED STATES
DEPARTMENT OF THE INTERIOR
GEOLOGICAL SURVEY

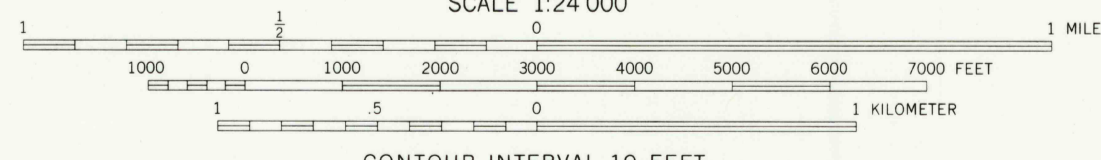
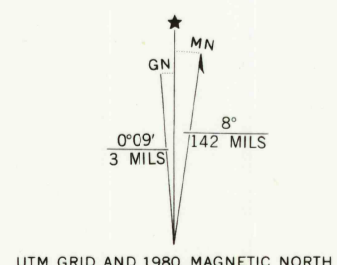
BLANCAS CREEK SOUTH QUADRANGLE
TEXAS
7.5 MINUTE SERIES (TOPOGRAPHIC)

618 IV NE
(BLANCAS CREEK NORTH)



618 IV SW
(ARROYO SALADO WEST)

Mapped, edited, and published by the Geological Survey
Control by USGS and NOS/NOAA
Topography by photogrammetric methods from aerial photographs
taken 1974. Field checked 1975. Map edited 1980
Projection and 10,000-foot grid ticks: Texas
coordinate system, south zone (Lambert conformal conic)
1000-meter Universal Transverse Mercator grid, zone 14
1927 North American datum
To place on the predicted North American Datum 1983
move the projection lines 29 meters south and
31 meters east as shown by dashed corner ticks
Fine red dashed lines indicate selected fence lines



CONTOUR INTERVAL 10 FEET
DOTTED LINES REPRESENT 5-FOOT CONTOURS
NATIONAL GEODETIC VERTICAL DATUM OF 1929

THIS MAP COMPLIES WITH NATIONAL MAP ACCURACY STANDARDS
FOR SALE BY U.S. GEOLOGICAL SURVEY, DENVER, COLORADO 80225, OR RESTON, VIRGINIA 22092
A FOLDER DESCRIBING TOPOGRAPHIC MAPS AND SYMBOLS IS AVAILABLE ON REQUEST



QUADRANGLE LOCATION

ROAD CLASSIFICATION	
Primary highway, hard surface	Light-duty road, hard or improved surface
Secondary highway, hard surface	Unimproved road
Interstate Route	U. S. Route
	State Route

USGS
Historical File
Topographic Division

BLANCAS CREEK SOUTH, TEX.
N2715-W9915/7.5

1980

DMA 6138 IV SE-SERIES V882

2799-131

JAN 13 1981
1950