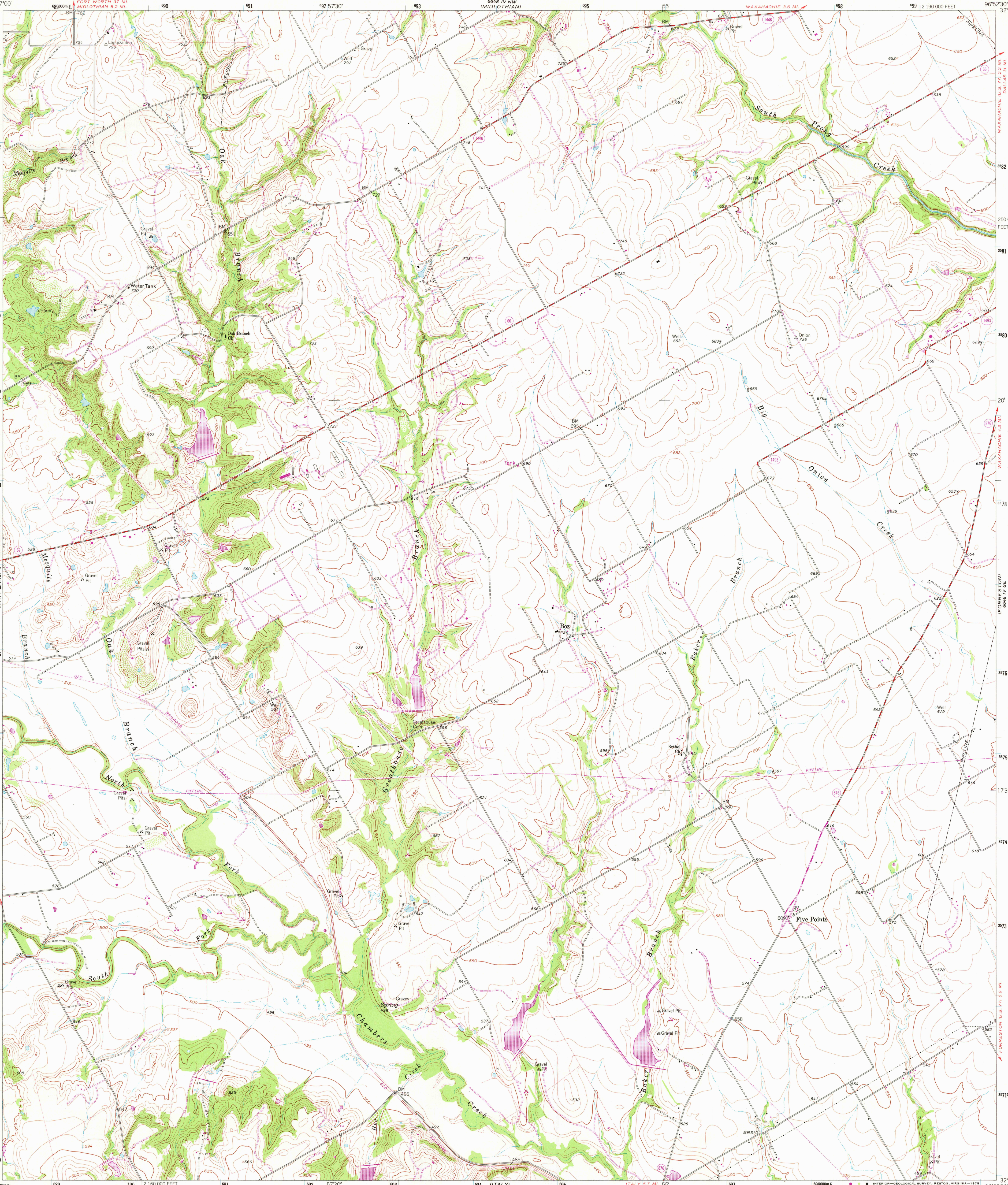


UNITED STATES
DEPARTMENT OF THE INTERIOR
GEOLOGICAL SURVEY

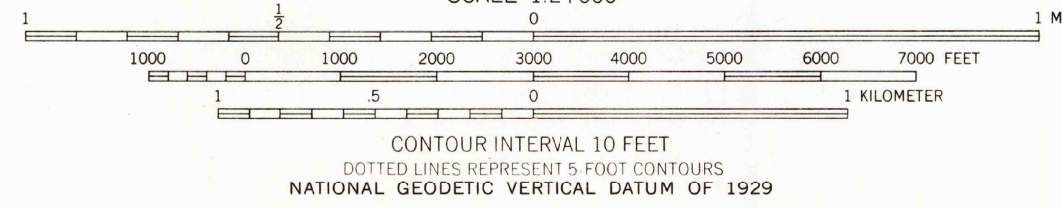
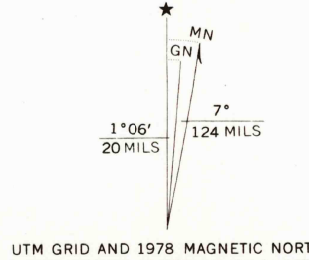


BOZ QUADRANGLE
TEXAS-ELLIS CO.
7.5 MINUTE SERIES (TOPOGRAPHIC)

6648 IV NW
(MIDLOTHIAN)



Mapped, edited, and published by the Geological Survey
Control by USGS and USCA&GS
Topography by photogrammetric methods from aerial
photographs taken 1958. Field checked 1960
Polyconic projection. 1927 North American datum.
10,000-foot grid based on Texas coordinate system,
north central zone
1000-meter Universal Transverse Mercator grid ticks,
zone 14, shown in blue
Fine red dashed lines indicate selected fence and field lines where
generally visible on aerial photographs. This information is unchecked
Revisions shown in purple and woodland compiled from
aerial photographs taken 1976 and other source data
This information not field checked. Map edited 1978



ROAD CLASSIFICATION
Primary highway, all weather, hard surface
Secondary highway, all weather, hard surface
Light-duty road, all weather, improved surface
Unimproved road, fair or dry weather
Interstate Route
U. S. Route
State Route

USGS
Historical File
Topographic Division
BOZ, TEX.
N3215-W9652.5/7.5
1960
PHOTOREVISED 1978
AMS 6648 IV SW-SERIES V882

APR 23 1978

2450