

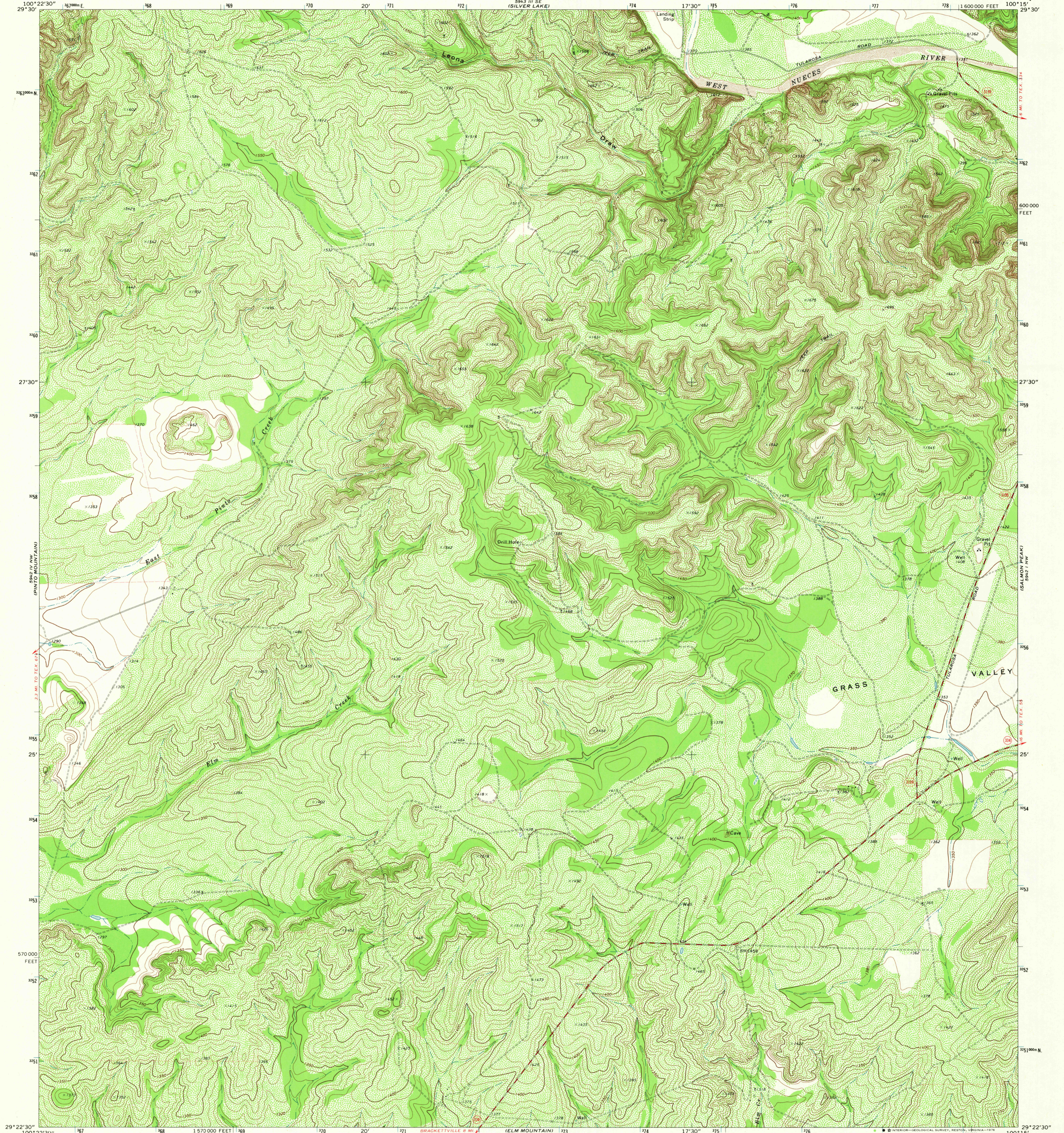
5943 III SE
(SILVER LAKE)

UNITED STATES
DEPARTMENT OF THE INTERIOR
GEOLOGICAL SURVEY

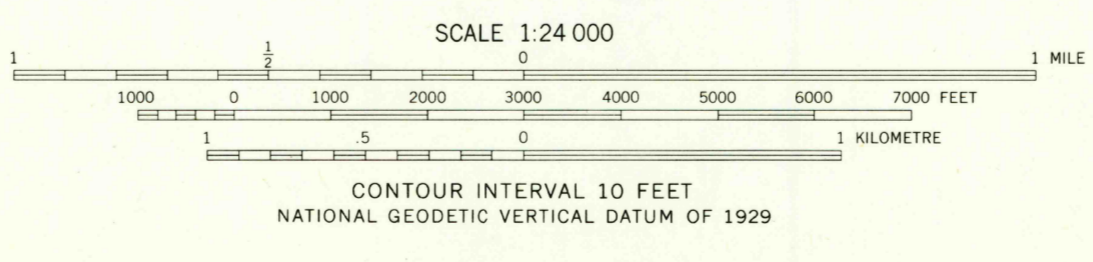
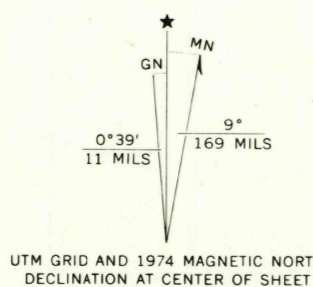
STATE OF TEXAS
TEXAS WATER DEVELOPMENT BOARD

BRACKETVILLE NE QUADRANGLE
TEXAS-KINNEY CO.
7.5 MINUTE SERIES (TOPOGRAPHIC)
NE 1/4 BRACKETVILLE IS QUADRANGLE

5944 IV SW
(WATERFORD)



Mapped, edited, and published by the Geological Survey
Control by USGS and NOS/NOAA
Topography by photogrammetric methods from aerial photographs taken 1973. Field checked 1974
Projection and 10,000-foot grid ticks: Texas coordinate system, south central zone (Lambert conformal conic)
1000-metre Universal Transverse Mercator grid ticks, zone 14, shown in blue. 1927 North American datum
Fine red dashed lines indicate selected fence lines



ROAD CLASSIFICATION

Primary highway, hard surface	Light-duty road, hard or improved surface
Secondary highway, hard surface	Unimproved road
Interstate Route	U. S. Route
	State Route

THIS MAP COMPLIES WITH NATIONAL MAP ACCURACY STANDARDS
FOR SALE BY U.S. GEOLOGICAL SURVEY, DENVER, COLORADO 80225, OR RESTON, VIRGINIA 22092
A FOLDER DESCRIBING TOPOGRAPHIC MAPS AND SYMBOLS IS AVAILABLE ON REQUEST

USGS
Historical File
Topographic Division

BRACKETVILLE NE, TEX.
NE 1/4 BRACKETVILLE IS QUADRANGLE
N2922.5-W10015.7.5

FEB 11 1977

1974

AMS 5942 IV NE-SERIES V882

2830