

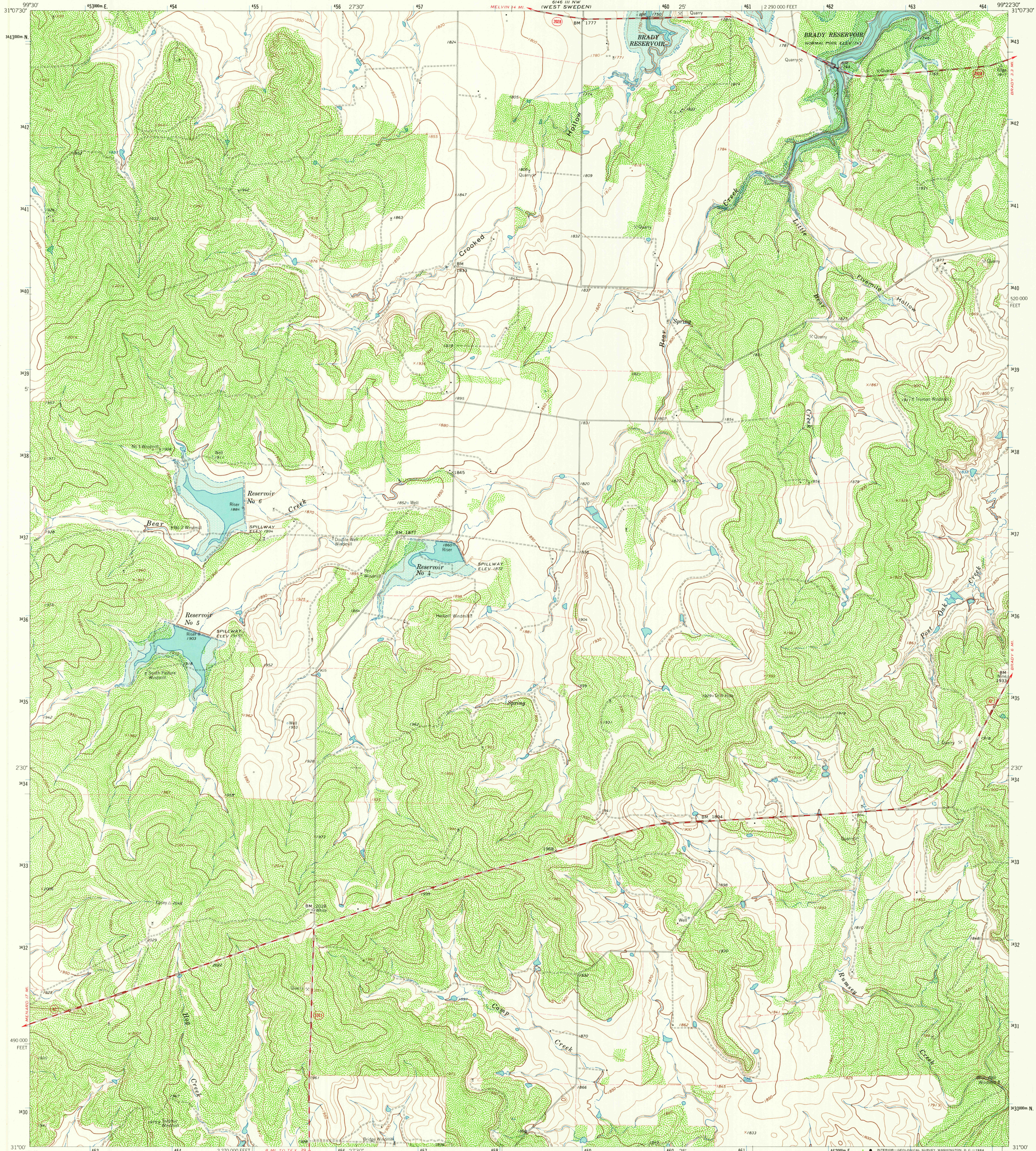
SCALE LINE
(METERS)

UNITED STATES
DEPARTMENT OF THE INTERIOR
GEOLOGICAL SURVEY

STATE OF TEXAS
TEXAS WATER COMMISSION

BRADY SW QUADRANGLE
TEXAS-MC CULLOCH CO.
7.5 MINUTE SERIES (TOPOGRAPHIC)

SCALE LINE
(METERS)
BRADY NORTH



Mapped, edited, and published by the Geological Survey

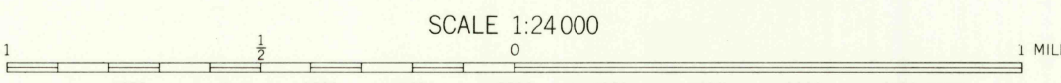
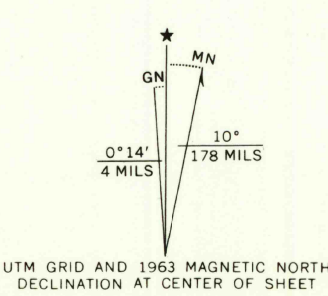
Control by USGS and USC&GS

Topography by photogrammetric methods from aerial photographs taken 1962. Field checked 1963

Polyconic projection 1927 North American datum 10,000-foot grid based on Texas coordinate system, central zone 1000-meter Universal Transverse Mercator grid ticks, zone 14, shown in blue

Fine red dashed lines indicate selected fence lines

Areas covered by dashed light blue pattern are subject to controlled inundation



SCALE 1:24,000

CONTOUR INTERVAL 10 FEET

DATUM IS MEAN SEA LEVEL



QUADRANGLE LOCATION

ROAD CLASSIFICATION

Medium-duty	Light-duty
Unimproved dirt	State Route

THIS MAP COMPLIES WITH NATIONAL MAP ACCURACY STANDARDS
FOR SALE BY U.S. GEOLOGICAL SURVEY, DENVER 25, COLORADO OR WASHINGTON 25, D. C.
A FOLDER DESCRIBING TOPOGRAPHIC MAPS AND SYMBOLS IS AVAILABLE ON REQUEST

U.S.G.S.
FILE COPY
TOPOGRAPHIC DIVISION

BRADY SW, TEX.
N3100-W9922 5/7 5
1963

AMS 6146 III SW-SERIES V882

SEP 24 1964

2700