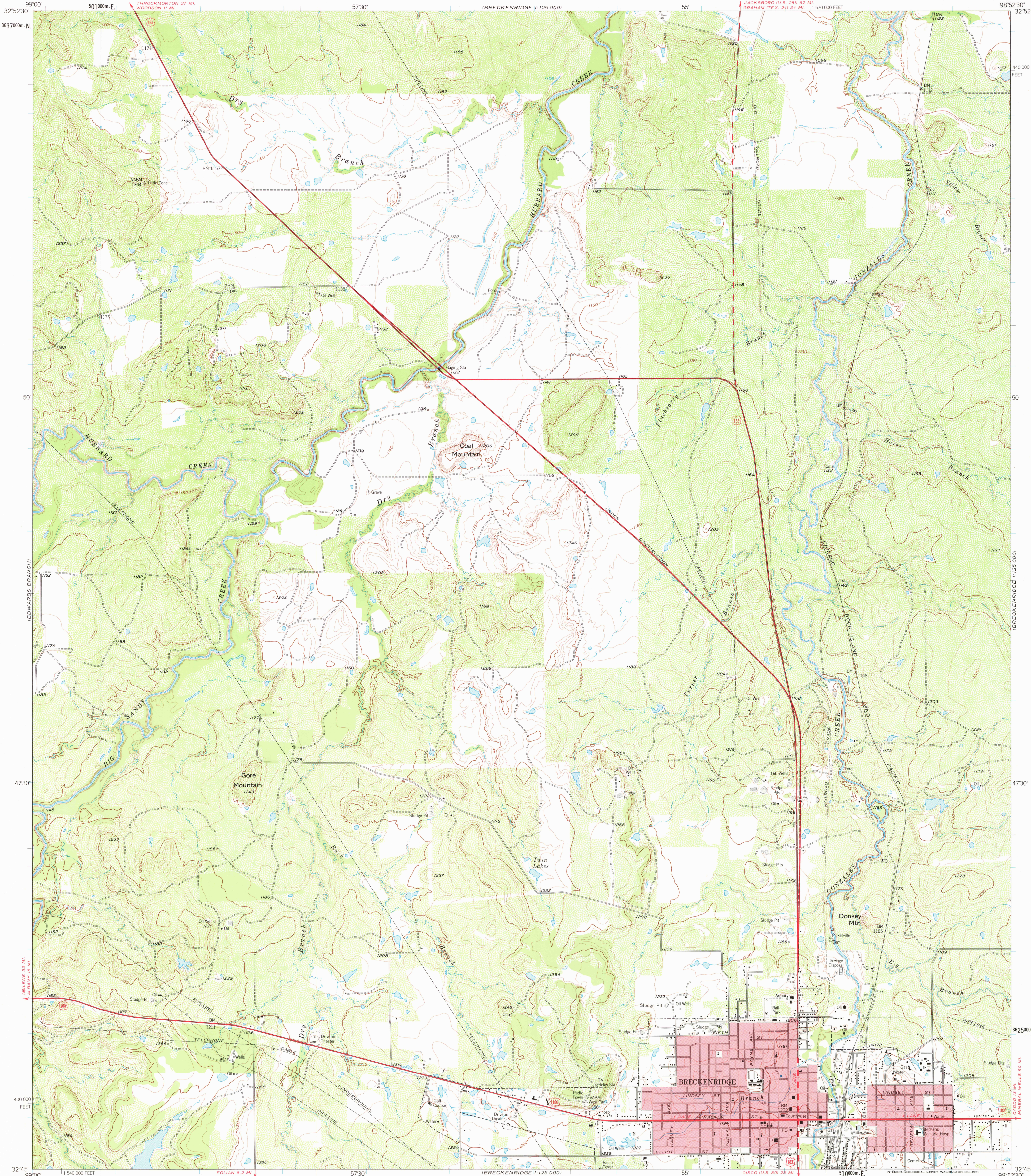


ALBANY 1:25000

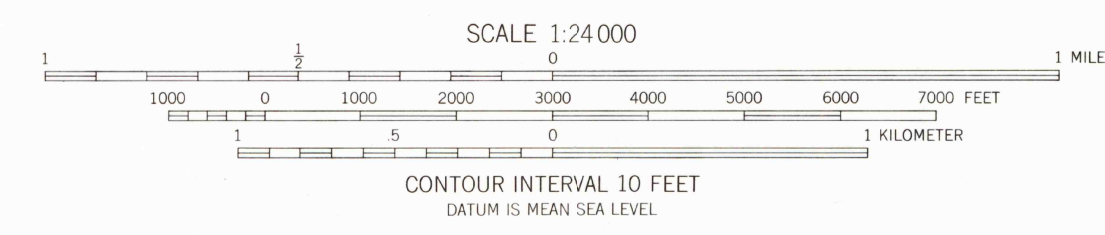
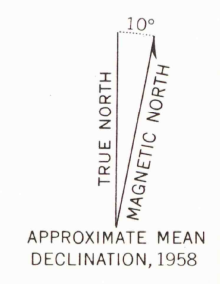
UNITED STATES
DEPARTMENT OF THE INTERIOR
GEOLOGICAL SURVEY

BRECKENRIDGE QUADRANGLE
TEXAS-STEPHENS CO.
7.5 MINUTE SERIES (TOPOGRAPHIC)

ALBANY 1:25000



Mapped, edited, and published by the Geological Survey
Control by USGS and USC&GS
Topography from aerial photographs by photogrammetric methods
Aerial photographs taken 1954. Field check 1958
Polyconic projection. 1927 North American datum
10,000-foot grid based on Texas coordinate system,
north central zone
1000-meter Universal Transverse Mercator grid ticks,
zone 14, shown in blue
Red tint indicates areas in which only
landmark buildings are shown



| ROAD CLASSIFICATION | |
|---------------------|-----------------|
| Heavy-duty | Light-duty |
| Medium-duty | Unimproved dirt |
| U.S. Route | |

THIS MAP COMPLIES WITH NATIONAL MAP ACCURACY STANDARDS
FOR SALE BY U.S. GEOLOGICAL SURVEY, DENVER 25, COLORADO OR WASHINGTON 25, D. C.
A FOLDER DESCRIBING TOPOGRAPHIC MAPS AND SYMBOLS IS AVAILABLE ON REQUEST

USGS
Historical File
Topographic Division

BRECKENRIDGE, TEX.
N3245-W9852.5/7.5

1958

JUN 08 1977

1700