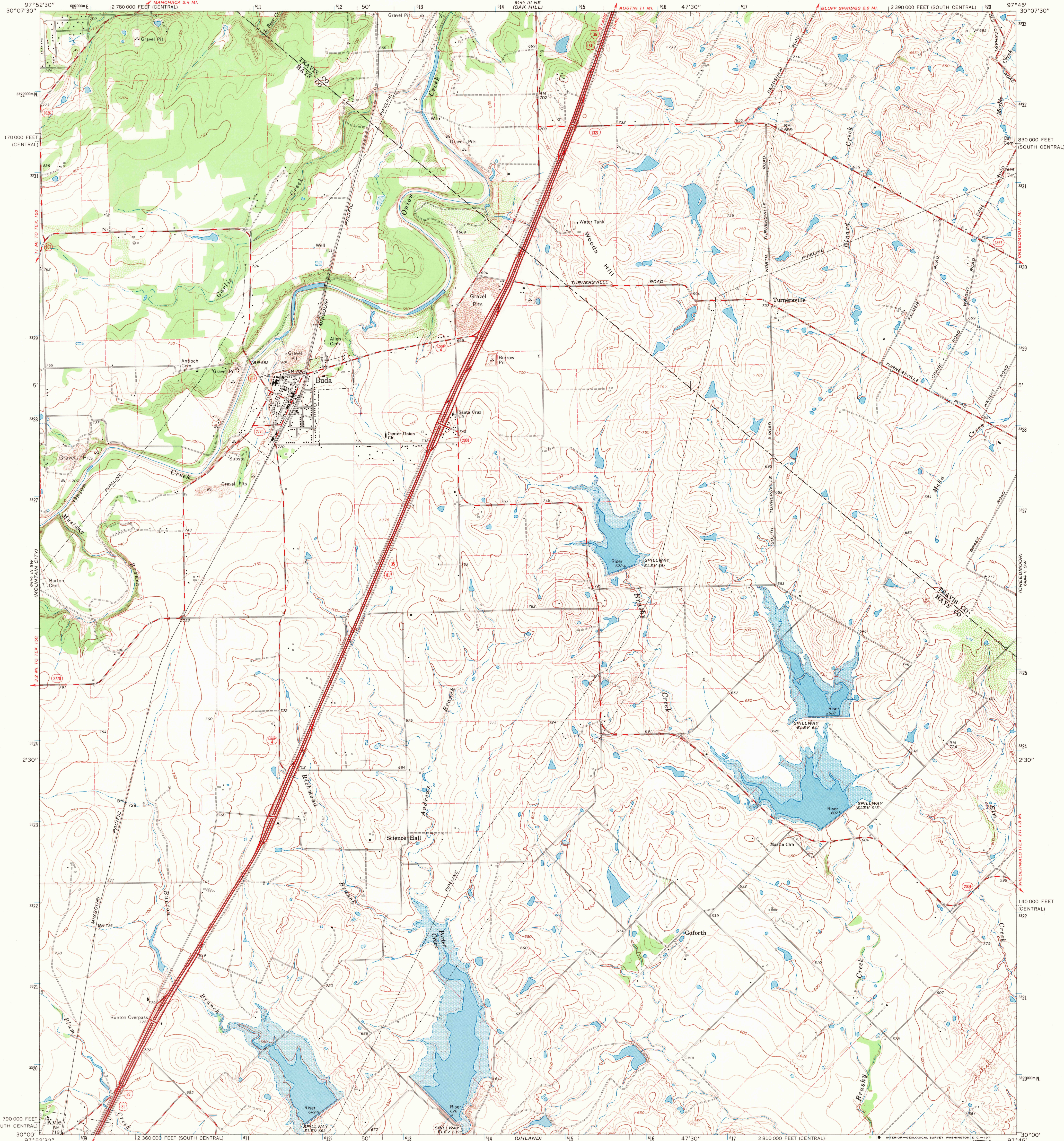


UNITED STATES
DEPARTMENT OF THE INTERIOR
GEOLOGICAL SURVEY

BUDA QUADRANGLE
TEXAS
7.5 MINUTE SERIES (TOPOGRAPHIC)
SE/4 BUDA 15' QUADRANGLE
2 390 000 FEET (SOUTH CENTRAL)



Mapped, edited, and published by the Geological Survey

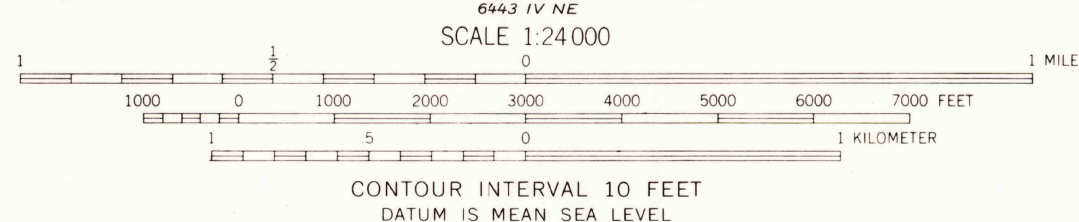
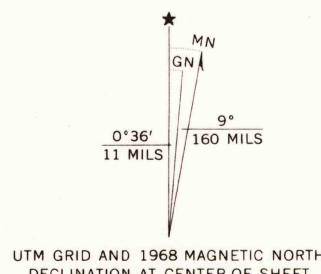
Control by USGS and USC&GS

Topography by photogrammetric methods from aerial photographs taken 1967. Field checked 1968

Polycyclic projection. 1927 North American datum 10,000-foot grids based on Texas coordinate system, south central and central zones 1000-meter Universal Transverse Mercator grid ticks, zone 14, shown in blue.

Fine red dashed lines indicate selected fence lines

Areas covered by dashed light-blue pattern are subject to controlled inundation



ROAD CLASSIFICATION	
Primary highway, all weather, hard surface	Light-duty road, all weather, improved surface
Secondary highway, all weather, hard surface	Unimproved road, fair or dry weather
Interstate Route	U.S. Route
	State Route



U.S.G.S.
FILE COPY
TOPOGRAPHIC DIVISION

BUDA, TEX.
SE/4 BUDA 15' QUADRANGLE
N3000-W9745/7.5

1968

AMS 6444 III SE-SERIES V882

JUN 14 1971

THIS MAP COMPLIES WITH NATIONAL MAP ACCURACY STANDARDS
FOR SALE BY U.S. GEOLOGICAL SURVEY, DENVER, COLORADO 80225, OR WASHINGTON, D.C. 20242
A FOLDER DESCRIBING TOPOGRAPHIC MAPS AND SYMBOLS IS AVAILABLE ON REQUEST