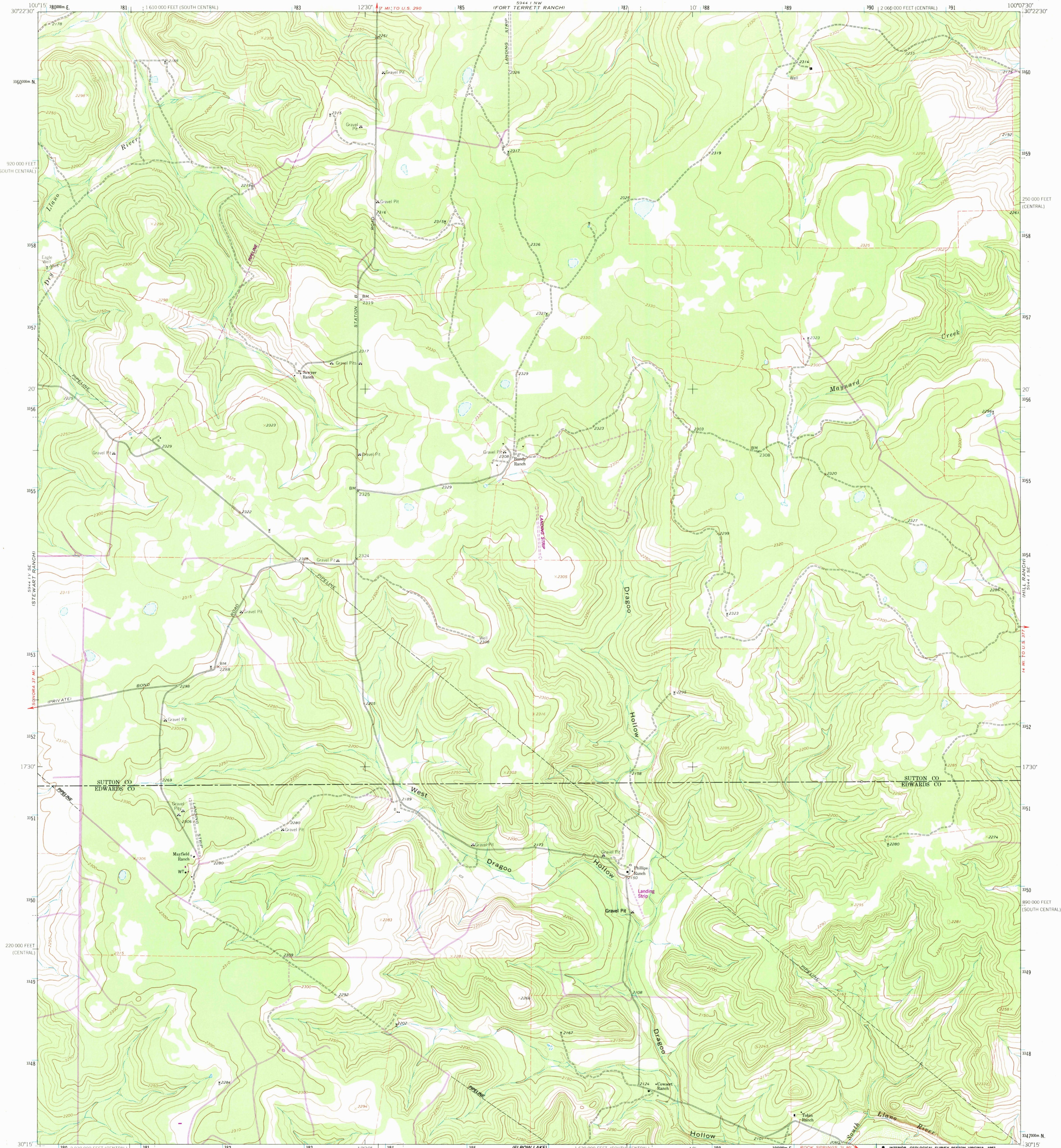


1:250,000  
SCALE

UNITED STATES  
DEPARTMENT OF THE INTERIOR  
GEOLOGICAL SURVEY

BUNDY RANCH QUADRANGLE  
TEXAS  
7.5 MINUTE SERIES (TOPOGRAPHIC)

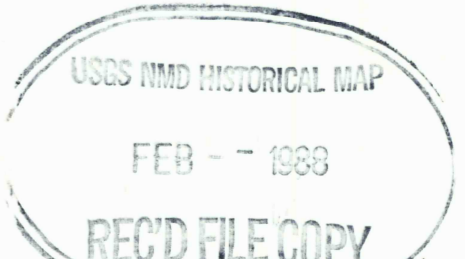
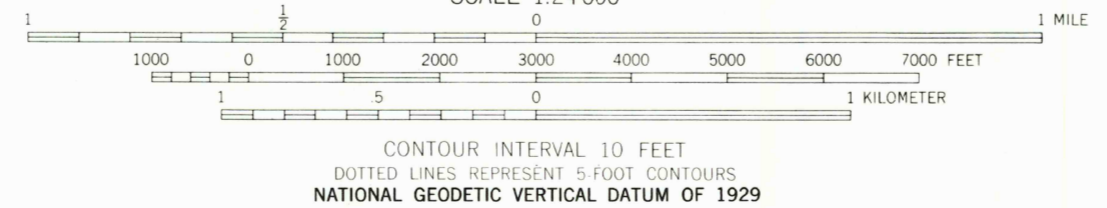
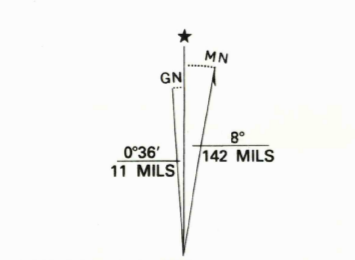
1:250,000  
SCALE



Mapped, edited, and published by the Geological Survey

Control by USGS and USC&GS  
Topography by photogrammetric methods from aerial photographs taken 1962. Field checked 1962  
Polyconic projection. 1927 North American datum. 10,000 foot grids based on Texas coordinate system, central and south central zones  
1000 meter Universal Transverse Mercator grid ticks, zone 14, shown in blue

To place on the predicted North American Datum 1983, move the projection lines 16 meters south and 34 meters east as shown by dashed corner ticks  
Revisions shown in purple compiled from aerial photographs taken 1985 and other sources. This information not field checked. Map edited 1987



BUNDY RANCH, TEX.  
30100-C2-TF-024  
1962  
PHOTOREVISED 1987  
DMA 5944 1 SW-SERIES V882

3000-142

THIS MAP COMPLIES WITH NATIONAL MAP ACCURACY STANDARDS  
FOR SALE BY U.S. GEOLOGICAL SURVEY, DENVER, COLORADO 80225, OR RESTON, VIRGINIA 22092  
A FOLDER DESCRIBING TOPOGRAPHIC MAPS AND SYMBOLS IS AVAILABLE ON REQUEST