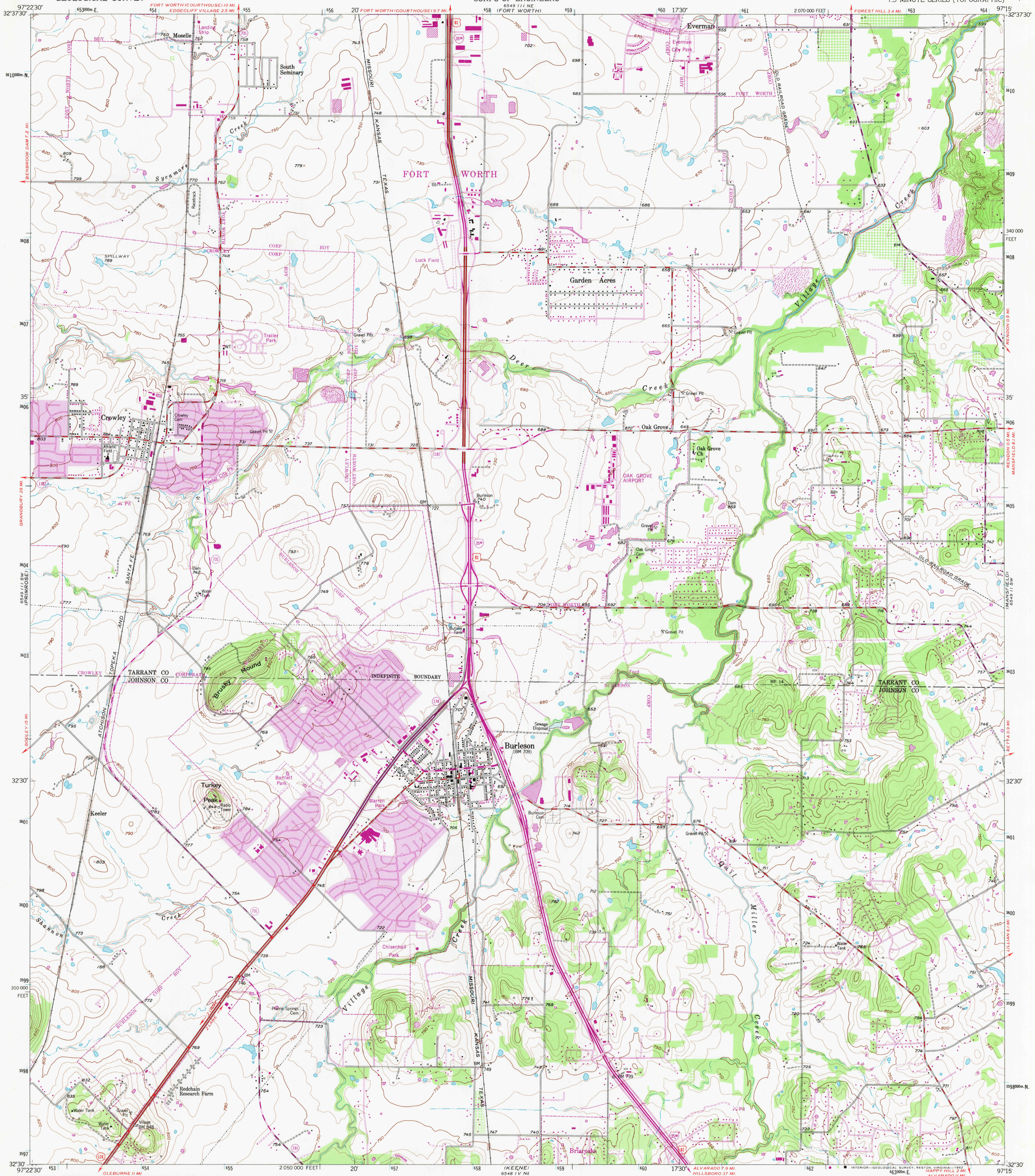


6549 111 N.W. (GENBROOK)  
6549 111 N.W. (KENNEDEALE)  
6549 111 N.W. (LUOCHUI)  
6549 111 N.W. (KENNEDEALE)

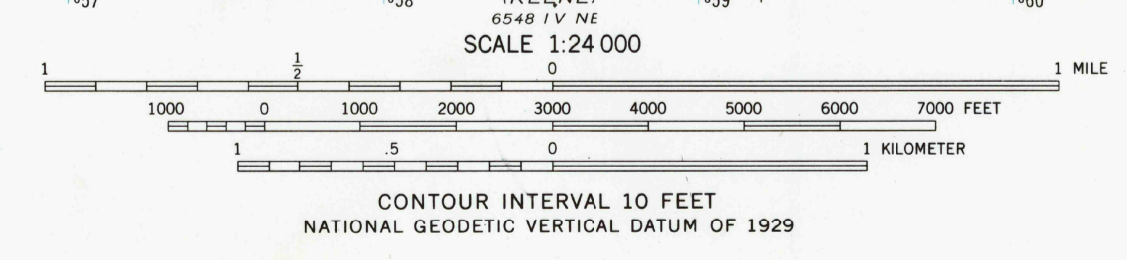
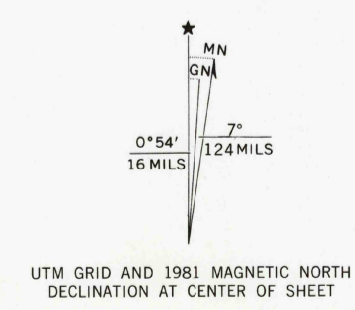
UNITED STATES  
DEPARTMENT OF THE INTERIOR  
GEOLOGICAL SURVEY

UNITED STATES  
DEPARTMENT OF THE ARMY  
CORPS OF ENGINEERS

BURLESON QUADRANGLE  
TEXAS  
7.5 MINUTE SERIES (TOPOGRAPHIC)



Mapped, edited, and published by the Geological Survey  
Control by USGS and NOS/NOAA  
Topography by photogrammetric methods from aerial photographs taken 1954. Field checked 1955  
Polyconic projection, 10,000-foot grid ticks based on Texas coordinate system, north central zone, 1000-meter Universal Transverse Mercator grid ticks, zone 14, shown in blue. 1927 North American Datum. To place on the predicted North American Datum 1983 move the projection lines 11 meters south and 28 meters east as shown by dashed corner ticks  
Revisions shown in purple and woodland compiled from aerial photographs taken 1978 and other sources. This information not field checked. Map edited 1981  
Purple tint indicates extension of urban areas



THIS MAP COMPLIES WITH NATIONAL MAP ACCURACY STANDARDS  
FOR SALE BY U. S. GEOLOGICAL SURVEY, DENVER, COLORADO 80225, OR RESTON, VIRGINIA 22092  
A FOLDER DESCRIBING TOPOGRAPHIC MAPS AND SYMBOLS IS AVAILABLE ON REQUEST

QUADRANGLE LOCATION

BURLESON, TEX.  
N3230-W9715/7.5  
1955  
PHOTOREVISED 1981  
DMA 6549 III SE-SERIES V882

RETURN TO:  
USGS AND HISTORICAL MAP ARCHIVES

MAR 21 1983

2/52