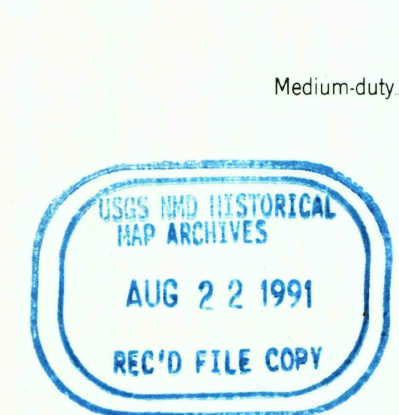
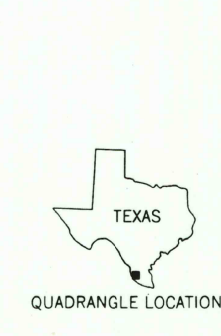
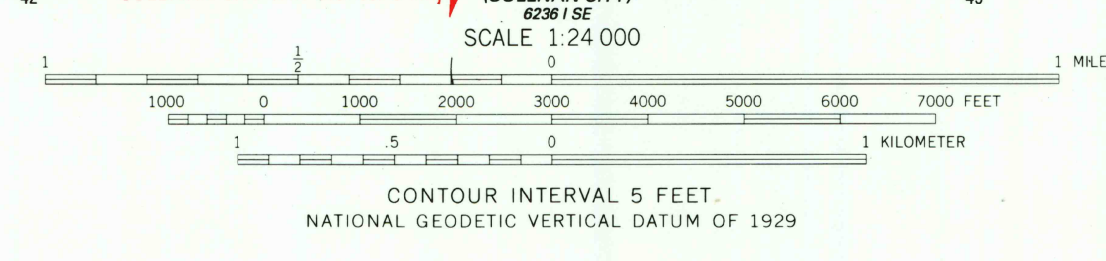




Mapped, edited, and published by the Geological Survey
Control by USGS and NOS/NOAA
Topography by photogrammetric methods from aerial photographs taken 1964. Field checked 1965
Polyconic projection. 1927 North American Datum
10,000-foot grid based on Texas coordinate system, south zone
1000-meter Universal Transverse Mercator grid ticks, zone 14, shown in blue
The difference between 1927 North American Datum and North American Datum of 1983 (NAD 83) for 7.5 minute intersections is given in USGS Bulletin 1875. The NAD 83 is shown by dashed corner ticks
Fine red dashed lines indicate selected fence lines

Map photinspected 1980
No major culture or drainage changes observed



ROAD CLASSIFICATION
Medium-duty ———— Light-duty ————
Unimproved dirt - - - - -
State Route ○

CAMP GARICA, TEX.
26098-D5-TF-024

1985
PHOTOINSPECTED 1980
DMA 6236 1 NE-SERIES 9882

THIS MAP COMPLIES WITH NATIONAL MAP ACCURACY STANDARDS
FOR SALE BY U.S. GEOLOGICAL SURVEY
DENVER, COLORADO 80225, OR RESTON, VIRGINIA 22092
A FOLDER DESCRIBING TOPOGRAPHIC MAPS AND SYMBOLS IS AVAILABLE ON REQUEST

2698-244