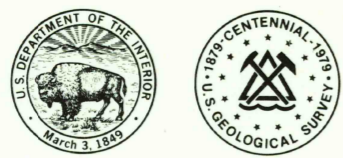


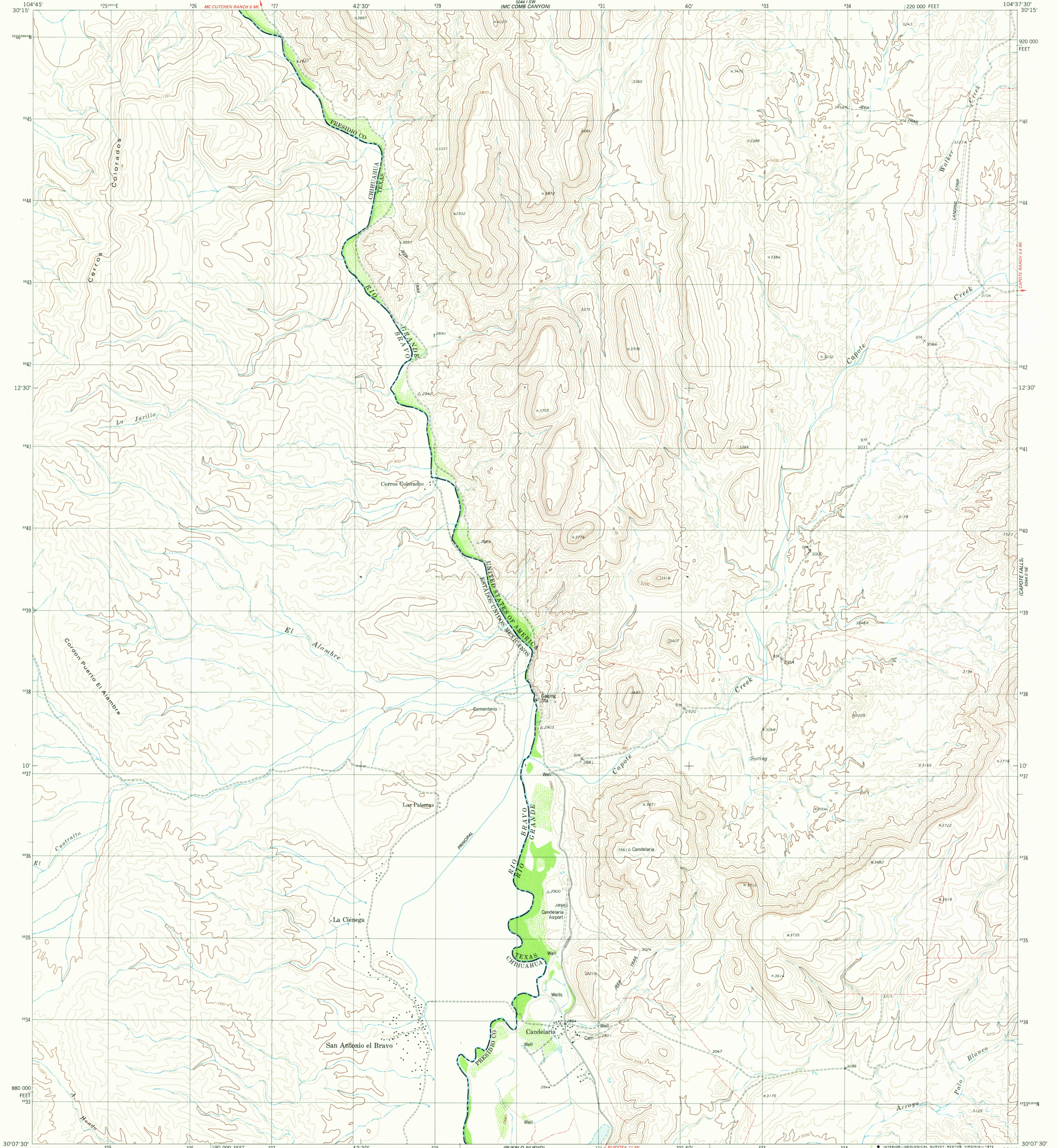
MC CUTCHEN RANCH

UNITED STATES
DEPARTMENT OF THE INTERIOR
GEOLOGICAL SURVEY



CANDELARIA QUADRANGLE
TEXAS-CHIHUAHUA
7.5 MINUTE SERIES (TOPOGRAPHIC)

5044 SW
(MC COMB CANYON)



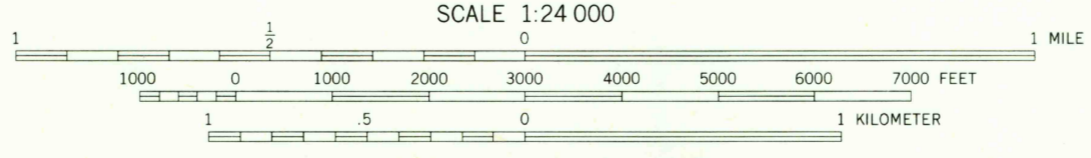
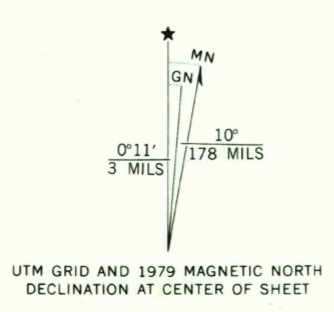
Mapped, edited, and published by the U. S. Geological Survey

Control by USGS, NOS/NOAA, International Boundary and Water Commission, and Dirección General de Estudios del Territorio Nacional (DETENAL)
U. S. portion compiled by photogrammetric methods from aerial photographs taken 1972. Field checked 1974. Map edited 1979
Mexico portion copied from DETENAL 1:50 000 scale map, San Antonio El Bravo H13881, Dated 1976

Projection and 10 000-foot grid ticks: Texas coordinate system, south central zone (Lambert conformal conic)
1000-meter Universal Transverse Mercator grid, zone 13 1927 North American datum

The International Boundary has been established by the International Boundary and Water Commission in accordance with Treaty of November 23, 1970

Fine red dashed lines indicate selected fence lines



SCALE 1:24 000
CONTOUR INTERVAL 40 FEET IN THE UNITED STATES
DOTTED LINES REPRESENT 20 FOOT CONTOURS
NATIONAL GEODETIC VERTICAL DATUM OF 1929
CONTOUR INTERVAL 20 METERS IN MEXICO
DATUM IS MEAN SEA LEVEL

U. S. PORTION OF THIS MAP COMPLIES WITH MAP ACCURACY STANDARDS
FOR SALE BY U.S. GEOLOGICAL SURVEY, DENVER, COLORADO 80225, OR RESTON, VIRGINIA 22092
AND BY DETENAL, SAN ANTONIO ABAD NO. 124, MEXICO 8, D.F.
A FOLDER DESCRIBING U.S. TOPOGRAPHIC MAPS AND SYMBOLS IS AVAILABLE FROM USGS



QUADRANGLE LOCATION

ROAD CLASSIFICATION	
Primary highway, hard surface	Light-duty road, hard or improved surface
Secondary highway, hard surface	Unimproved road
Interstate Route	U. S. Route
	State Route

USGS
Historical File
Topographic Division

CANDELARIA, TEX.-CHIH.
N3007.5-W10437.517.5

1979
DMA 5044 II NW-SERIES V882

MAR 25 1980
2100