

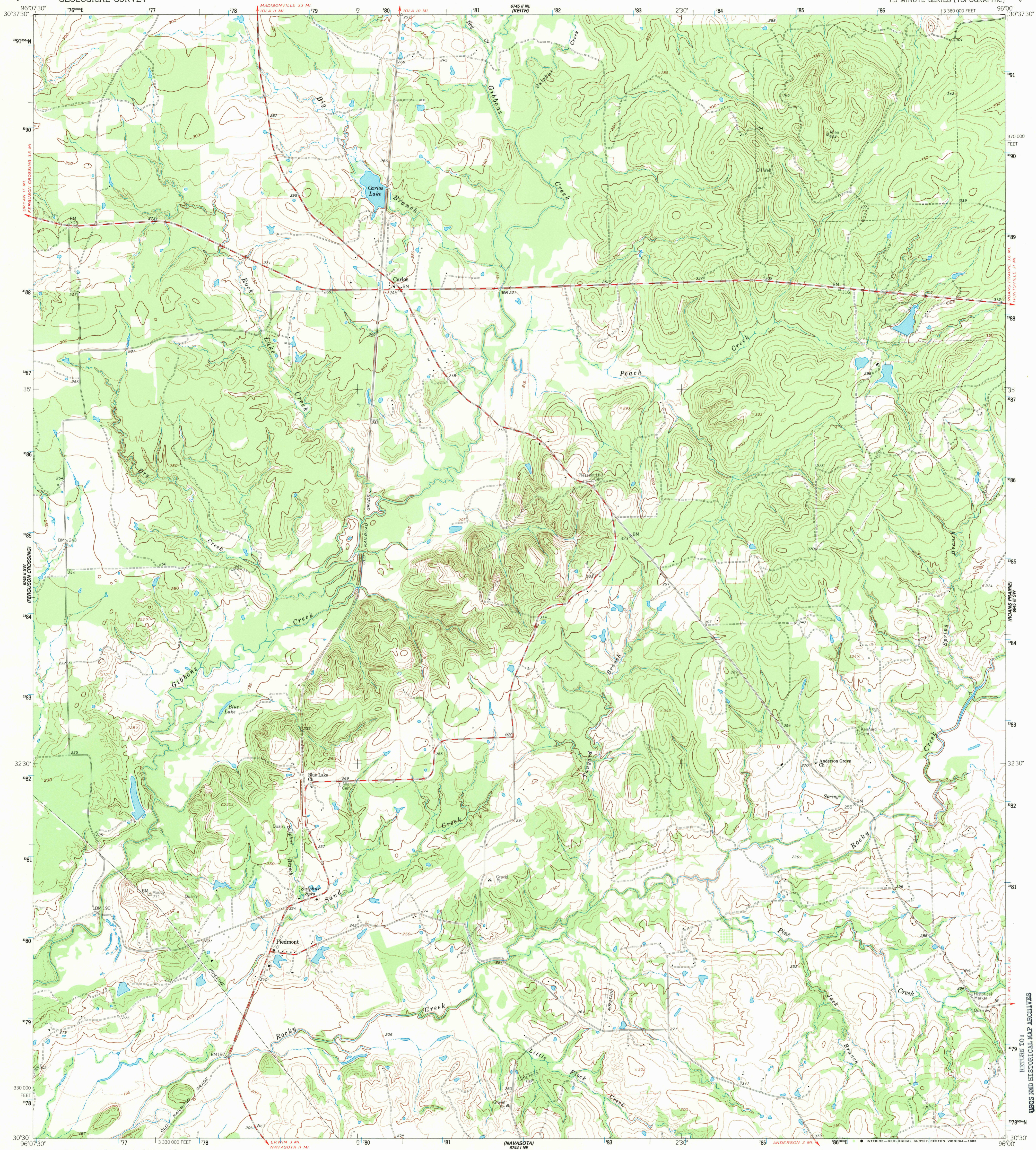
86° 11' 10" W  
30° 37' 30" N

UNITED STATES  
DEPARTMENT OF THE INTERIOR  
GEOLOGICAL SURVEY

STATE OF TEXAS  
BOARD OF WATER ENGINEERS

CARLOS QUADRANGLE  
TEXAS-GRIMES CO.  
7.5 MINUTE SERIES (TOPOGRAPHIC)

86° 11' 10" W  
30° 37' 30" N



Mapped, edited, and published by the Geological Survey  
Control by USGS and USC&GS  
Topography from aerial photographs by photogrammetric methods  
Aerial photographs taken 1959. Field check 1960  
Polyconic projection. 1927 North American datum  
10,000-foot grid based on Texas coordinate system,  
central zone  
1000 meter Universal Transverse Mercator grid ticks,  
zone 14, shown in blue  
Fine red dashed lines indicate selected fence and field lines  
where generally visible on aerial photographs  
This information is unclassified  
Areas covered by dashed light-blue pattern are subject  
to controlled inundation

UTM GRID AND 1960 MAGNETIC NORTH  
DECLINATION AT CENTER OF SHEET  
To place on the predicted North American Datum 1983  
move the projection lines 18 meters south and  
24 meters east as shown by dashed corner ticks

SCALE 1:24 000  
1 1000 0 1000 2000 3000 4000 5000 6000 7000 FEET  
1 5 10 15 20 25 30 35 40 45 50 55 60 65 70 75 80 85 90 95 100 METERS  
CONTOUR INTERVAL 10 FEET  
DOTTED LINES REPRESENT 5-FOOT CONTOURS  
NATIONAL GEODETIC VERTICAL DATUM OF 1929

ROAD CLASSIFICATION  
Medium-duty ——— Light-duty ———  
Unimproved dirt - - - - -



QUADRANGLE LOCATION  
3096-411

THIS MAP COMPLIES WITH NATIONAL MAP ACCURACY STANDARDS  
FOR SALE BY U. S. GEOLOGICAL SURVEY, DENVER, COLORADO 80225, OR RESTON, VIRGINIA 22092  
A FOLDER DESCRIBING TOPOGRAPHIC MAPS AND SYMBOLS IS AVAILABLE ON REQUEST

CARLOS, TEX.  
N3030-W9600/7.5  
1960  
DMA 6745 II SE-SERIES V682

REVIEW TO: REVISION TO: REVISION TO:  
USGS AND HISTORICAL MAP ARCHIVES