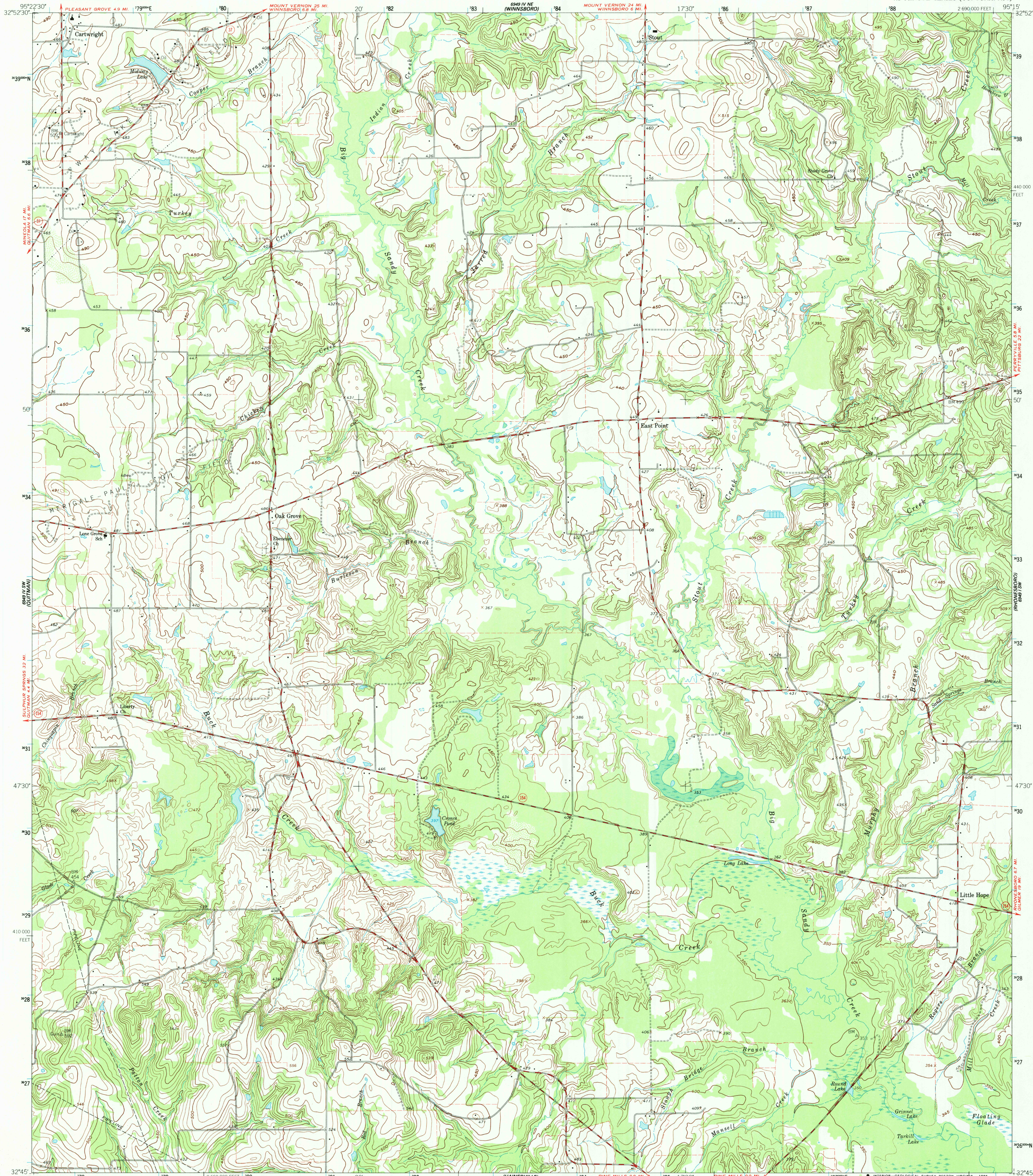


UNITED STATES  
DEPARTMENT OF THE INTERIOR  
GEOLOGICAL SURVEY

CARTWRIGHT QUADRANGLE  
TEXAS-WOOD CO.  
7.5 MINUTE SERIES (TOPOGRAPHIC)



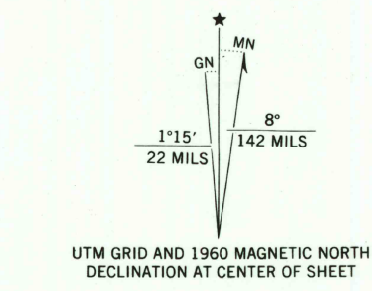
Mapped, edited, and published by the Geological Survey  
Control by USGS and USC&GS

Topography by photogrammetric methods from aerial  
photographs taken 1958. Field checked 1960

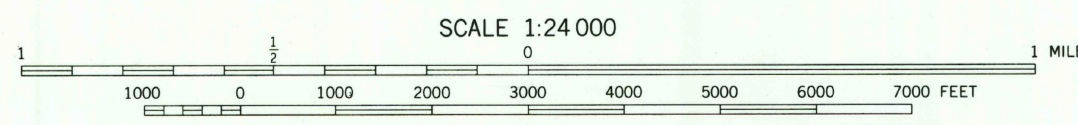
Polyconic projection. 1927 North American Datum  
10,000-foot grid based on Texas coordinate system,  
north central zone  
1000 meter Universal Transverse Mercator grid ticks,  
zone 15, shown in blue

Fine red dashed lines indicate selected fence and field lines  
where generally visible on aerial photographs  
This information is unchecked

To place on the predicted North American Datum 1983  
move the projection lines 11 meters south and  
22 meters east as shown by dashed corner ticks



Map photoinspected 1976  
No major culture or drainage changes observed



THIS MAP COMPLIES WITH NATIONAL MAP ACCURACY STANDARDS  
FOR SALE BY U. S. GEOLOGICAL SURVEY, DENVER, COLORADO 80225, OR RESTON, VIRGINIA 22092  
A FOLDER DESCRIBING TOPOGRAPHIC MAPS AND SYMBOLS IS AVAILABLE ON REQUEST



3295-431

ROAD CLASSIFICATION  
Medium-duty ——— Light-duty ———  
Unimproved dirt ———  
State Route ———

CARTWRIGHT, TEX.  
32095-G3-TF-024

1960  
PHOTOINSPECTED 1976  
DMA 6949 IV SE-SERIES V882

RETURN TO:  
USGS AND HISTORICAL MAP ARCHIVES