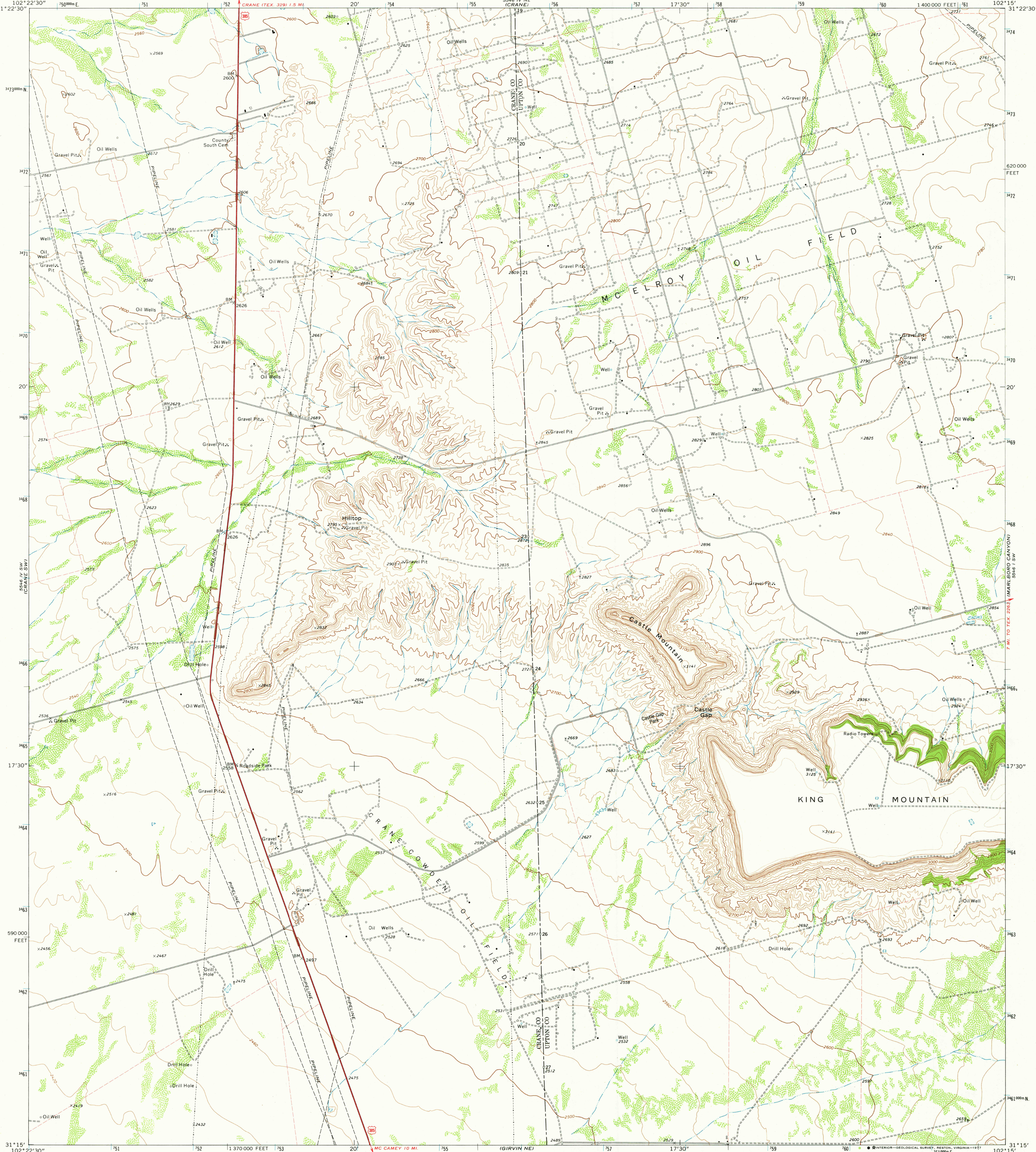


5546 IV NW
(CRANE NW)
31°22'30"

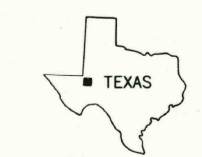
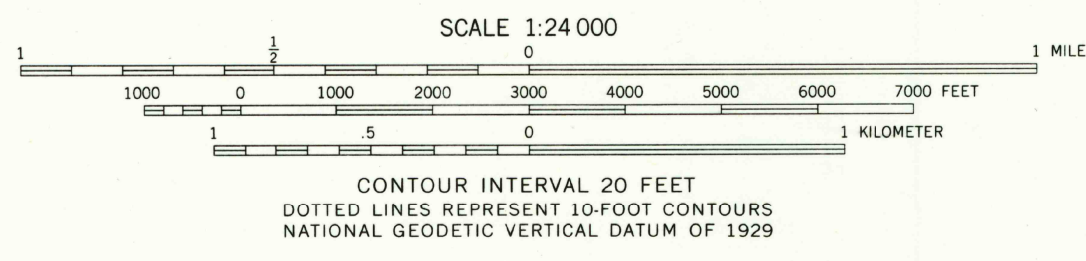
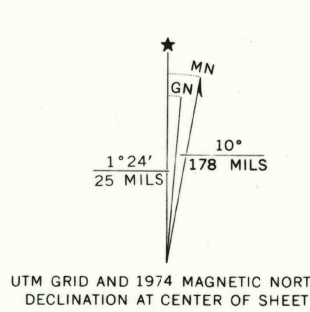
UNITED STATES
DEPARTMENT OF THE INTERIOR
GEOLOGICAL SURVEY

CASTLE GAP QUADRANGLE
TEXAS
7.5 MINUTE SERIES (TOPOGRAPHIC)

5546 I NW
(MC CAMEY NW)
31°22'30"



Mapped, edited, and published by the Geological Survey
Control by USGS and NOS/NOAA
Topography by photogrammetric methods from aerial
photographs taken 1972. Field checked 1974
Projection and 10,000-foot grid ticks: Texas
coordinate system, central zone (Lambert conformal conic)
1000-meter Universal Transverse Mercator grid ticks,
zone 13, shown in blue. 1927 North American datum
Fine red dashed lines indicate selected fence lines



- ROAD CLASSIFICATION
- Primary highway, hard surface
 - Secondary highway, hard surface
 - Interstate Route
 - Light-duty road, hard or improved surface
 - Unimproved road
 - U. S. Route
 - State Route

THIS MAP COMPLIES WITH NATIONAL MAP ACCURACY STANDARDS
FOR SALE BY U. S. GEOLOGICAL SURVEY, DENVER, COLORADO 80225, OR RESTON, VIRGINIA 22092
A FOLDER DESCRIBING TOPOGRAPHIC MAPS AND SYMBOLS IS AVAILABLE ON REQUEST

3102-131

USGS
Historical File
Topographic Division

CASTLE GAP, TEX.
N3115-W10215/7.5

1974
AMS 5546 IV SE—SERIES V882

OCT 26 1977
2950