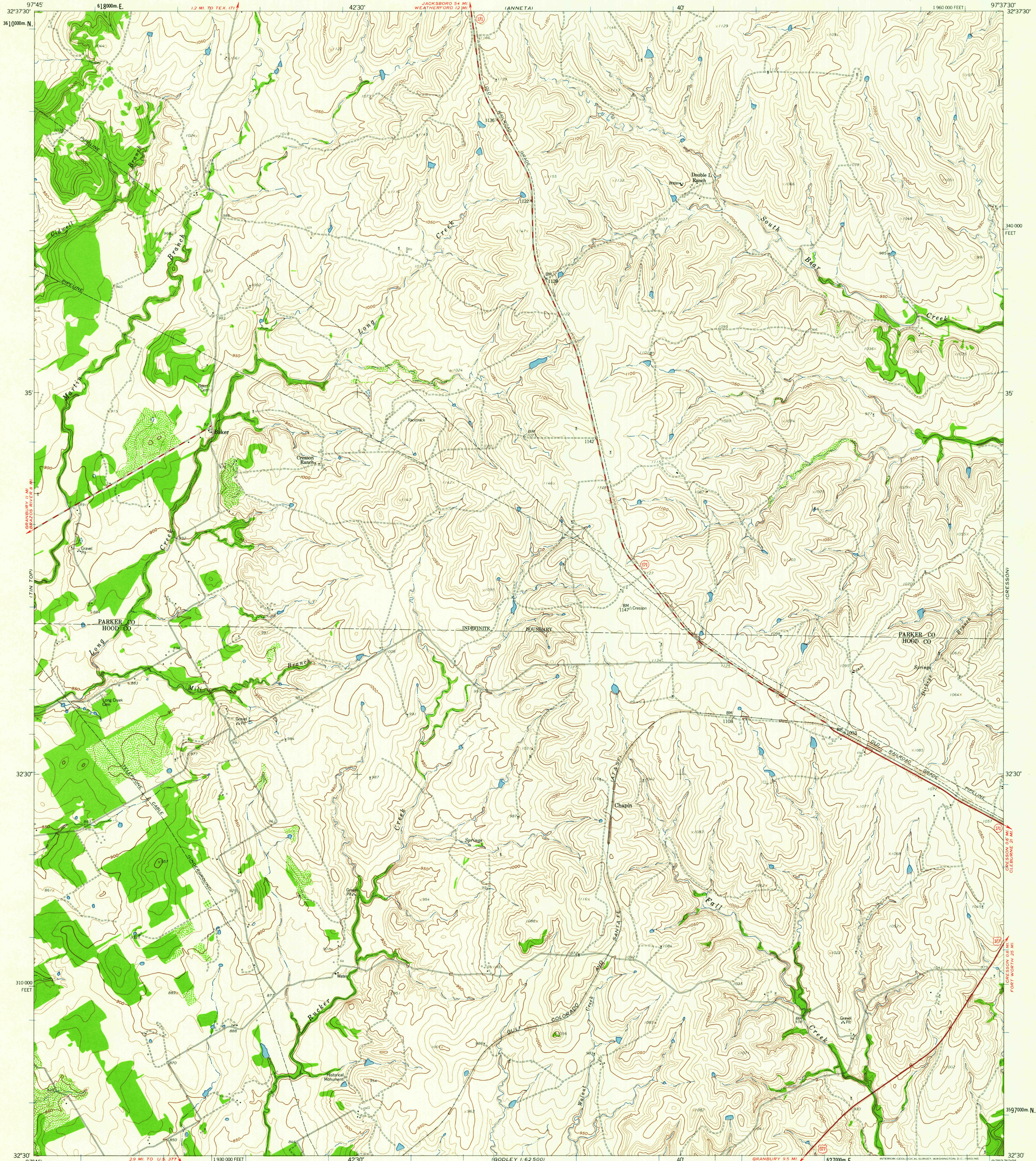


WEATHERFORD SOUTH

UNITED STATES
DEPARTMENT OF THE INTERIOR
GEOLOGICAL SURVEY

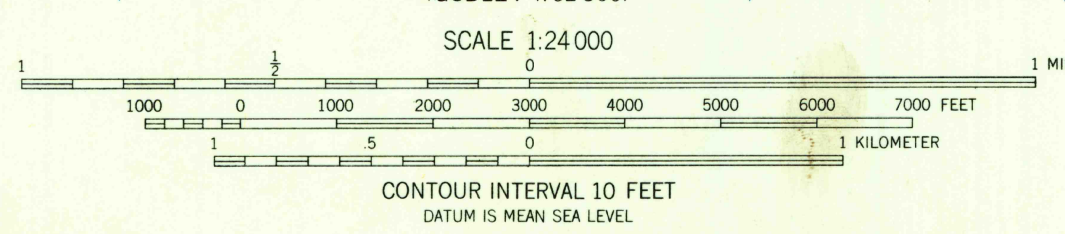
CHAPIN QUADRANGLE
TEXAS
7.5 MINUTE SERIES (TOPOGRAPHIC)
SW 1/4 CRESSON 15 QUADRANGLE

TALEDOO



Mapped, edited, and published by the Geological Survey
Control by USGS and USC&GS
Topography from aerial photographs by photogrammetric methods
Aerial photographs taken 1957. Field check 1958
Polyconic projection, 1927 North American datum
10,000-foot grid based on Texas coordinate system,
north central zone
1000-meter Universal Transverse Mercator grid ticks,
zone 14, shown in blue

TRUE NORTH
MAGNETIC NORTH
APPROXIMATE MEAN
DECLINATION, 1958



ROAD CLASSIFICATION
Heavy-duty ——— Light-duty ———
Medium-duty ——— Unimproved dirt ———
U.S. Route ——— State Route ———

U.S.G.S.
FILE COPY
TOPOGRAPHIC DIVISION

CHAPIN, TEX.
SW 1/4 CRESSON 15 QUADRANGLE
N3230-W9737.5/7.5
1958

APR 23 1960
2000

THIS MAP COMPLIES WITH NATIONAL MAP ACCURACY STANDARDS
FOR SALE BY U.S. GEOLOGICAL SURVEY, DENVER 25, COLORADO OR WASHINGTON 25, D.C.
A FOLDER DESCRIBING TOPOGRAPHIC MAPS AND SYMBOLS IS AVAILABLE ON REQUEST