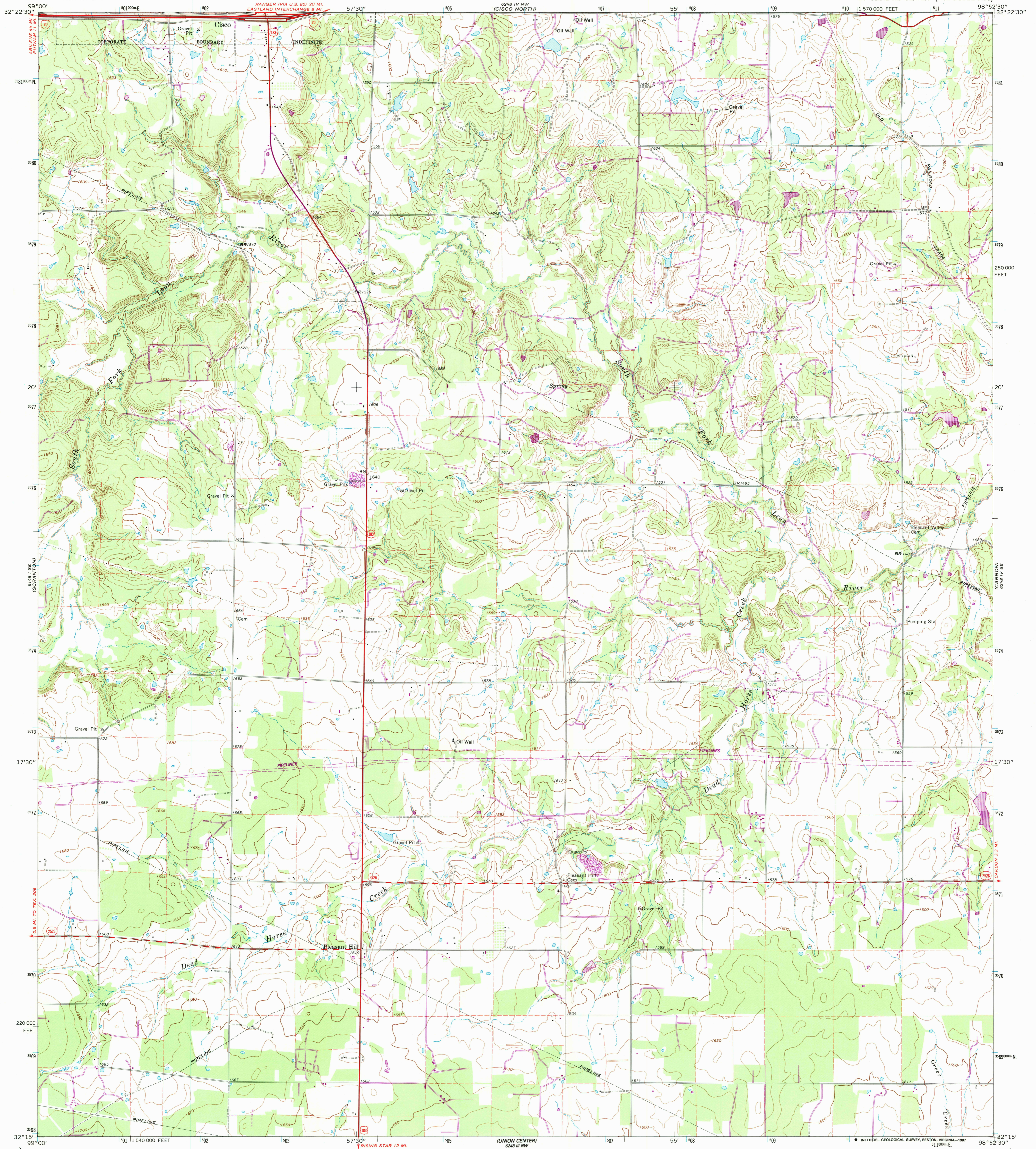


6248 IV NW  
GENIE LAYER

6248 IV NE  
GENIE LAYER

UNITED STATES  
DEPARTMENT OF THE INTERIOR  
GEOLOGICAL SURVEY

CISCO SOUTH QUADRANGLE  
TEXAS—EASTLAND CO.  
7.5 MINUTE SERIES (TOPOGRAPHIC)



Maped, edited, and published by the Geological Survey  
Control by USGS and USC&GS  
Topography by photogrammetric methods from aerial  
photographs taken 1965. Field checked 1966  
Polyconic projection. 1927 North American datum  
10,000-foot grid based on Texas coordinate system,  
north central zone  
1000-meter Universal Transverse Mercator grid ticks,  
zone 14, shown in blue  
Red tint indicates area in which only landmark buildings are shown  
Fine red dashed lines indicate selected fence lines  
To place on the predicted North American Datum 1983,  
move the projection lines 11 meters south and  
32 meters east as shown by dashed corner ticks

UTM GRID AND 1987 MAGNETIC NORTH  
DECLINATION AT CENTER OF SHEET  
Revisions shown in purple compiled from aerial  
photographs taken 1983 and other sources  
This information not field checked. Map edited 1987

THIS MAP COMPLIES WITH NATIONAL MAP ACCURACY STANDARDS  
FOR SALE BY U.S. GEOLOGICAL SURVEY, DENVER, COLORADO 80225, OR RESTON, VIRGINIA 22092  
A FOLDER DESCRIBING TOPOGRAPHIC MAPS AND SYMBOLS IS AVAILABLE ON REQUEST

ROAD CLASSIFICATION  
Heavy-duty ——— Light-duty ———  
Medium-duty ——— Unimproved dirt ———  
Interstate Route U.S. Route State Route

3298-232  
FEB - 1988  
REC'D FILE COPY

CISCO SOUTH, TEX.  
32098-C8-TF-024  
1966  
PHOTOREVISED 1987  
DMA 6248 IV SW—SERIES V882