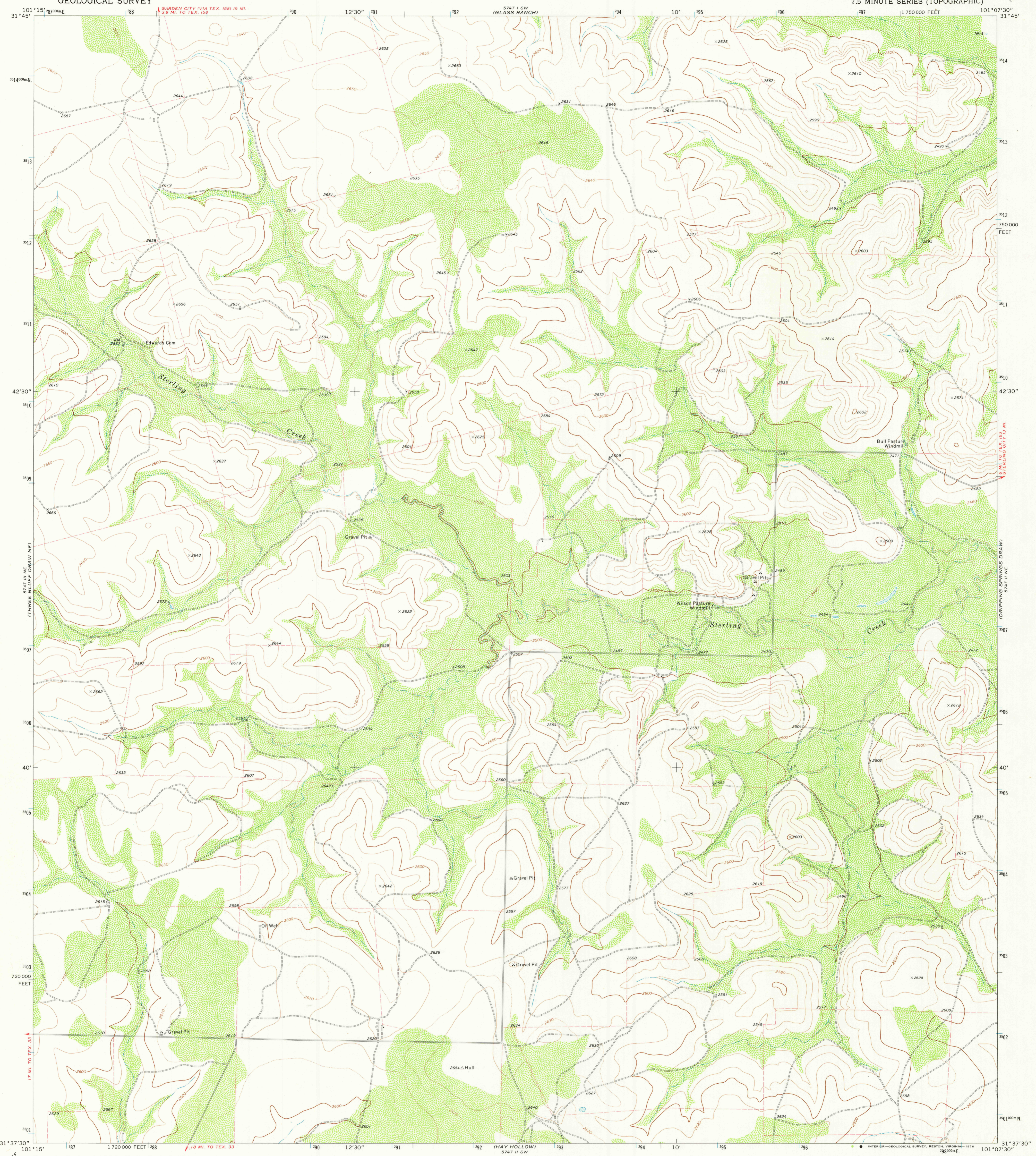


5747 III SE
COLUMBIE DRAW
RESERVOIR

UNITED STATES
DEPARTMENT OF THE INTERIOR
GEOLOGICAL SURVEY

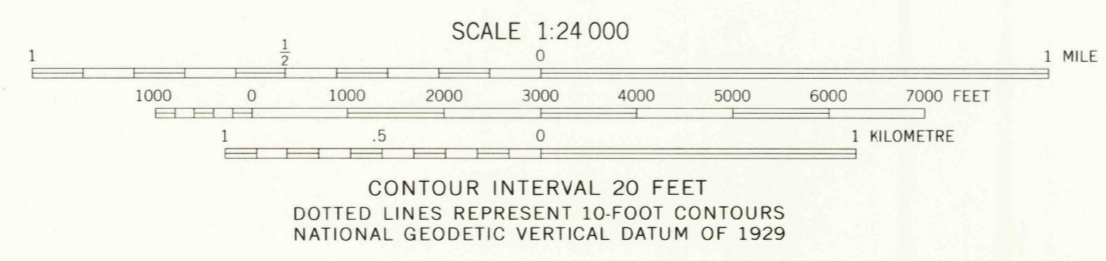
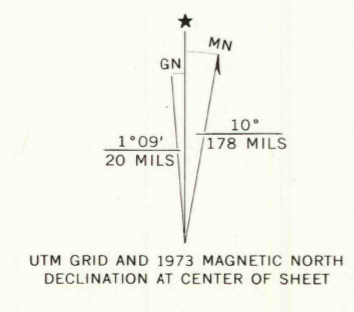
COON DIVE DRAW NW QUADRANGLE
TEXAS - STERLING CO.
7.5 MINUTE SERIES (TOPOGRAPHIC)

5747 III SE
COLUMBIE DRAW



THREE BLUFF
DRAW NW
5747 III SE

Mapped, edited, and published by the Geological Survey
Control by USGS and NOS/NOAA
Topography by photogrammetric methods from aerial
photographs taken 1972. Field checked 1973
Projection and 10,000-foot grid ticks: Texas
coordinate system, central zone (Lambert conformal conic)
1000-metre Universal Transverse Mercator grid ticks,
zone 14, shown in blue. 1927 North American datum
Fine red dashed lines indicate selected fence lines



ROAD CLASSIFICATION

Primary highway, hard surface	Light-duty road, hard or improved surface
Secondary highway, hard surface	Unimproved road
Interstate Route	U.S. Route
	State Route

COON DIVE DRAW NW, TEX.
N3137.5-W10107.5/7.5

THIS MAP COMPLIES WITH NATIONAL MAP ACCURACY STANDARDS
FOR SALE BY U.S. GEOLOGICAL SURVEY, DENVER, COLORADO 80225, OR RESTON, VIRGINIA 22092
A FOLDER DESCRIBING TOPOGRAPHIC MAPS AND SYMBOLS IS AVAILABLE ON REQUEST

USGS
Historical File
Topographic Division

1973
AMS 5747 II NW-SERIES V882
MAY 07 1976