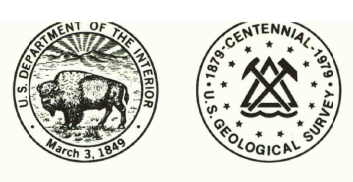


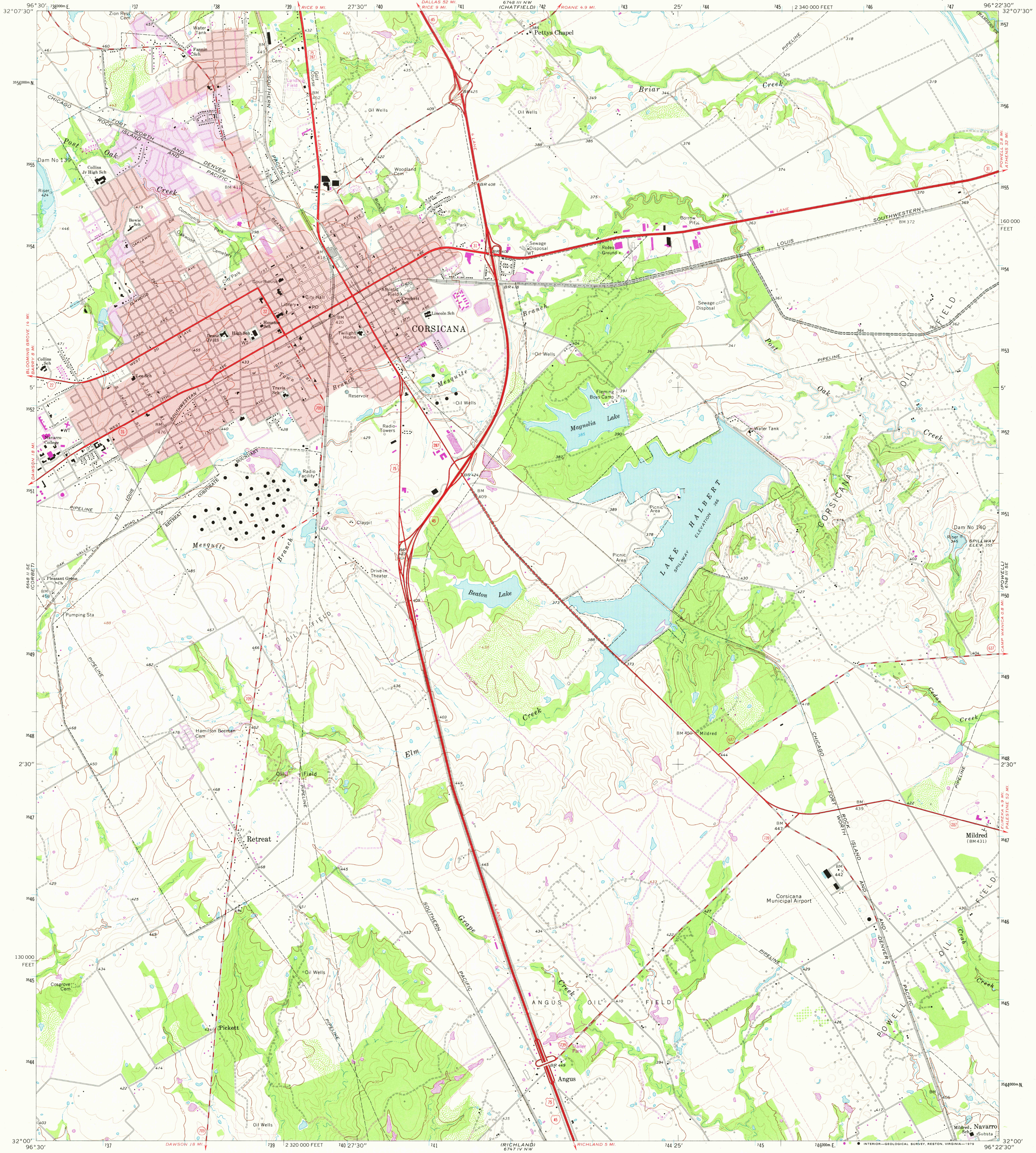
6798 III NE (BEZETTE)

UNITED STATES DEPARTMENT OF THE INTERIOR GEOLOGICAL SURVEY

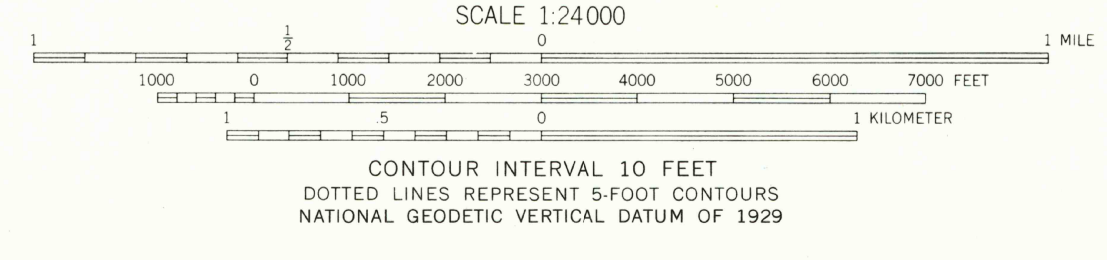
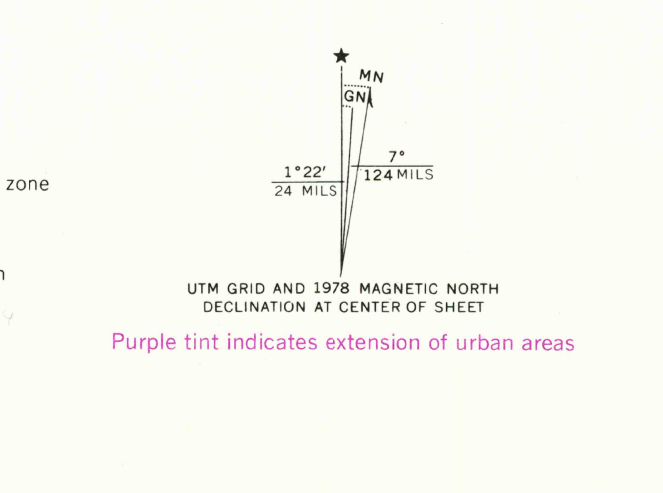


CORSICANA QUADRANGLE TEXAS-NAVARRO CO. 7.5 MINUTE SERIES (TOPOGRAPHIC)

6798 III NE (BEZETTE)



Mapped, edited, and published by the Geological Survey Control by USGS and USC&GS Topography by photogrammetric methods from aerial photographs taken 1964. Field checked 1965
Polyconic projection. 1927 North American datum 10,000-foot grid based on Texas coordinate system, north central zone 1000-meter Universal Transverse Mercator grid ticks, zone 14, shown in blue
Red tint indicates areas in which only landmark buildings are shown
Fine red dashed lines indicate selected fence lines
Areas covered by dashed light-blue pattern are subject to controlled inundation
Revisions shown in purple and woodland compiled from aerial photographs taken 1976 and other source data. This information not field checked. Map edited 1978



ROAD CLASSIFICATION
Heavy-duty ——— Light-duty ———
Medium-duty ——— Unimproved dirt ———
○ Interstate Route ○ U.S. Route ○ State Route

TEXAS
QUADRANGLE LOCATION

APR 23 1978

CORSICANA, TEX.
N3200—W9622.5/7.5

1965
PHOTO REVISION 1978
AMS 6748 III SW—SERIES V82

3296-122

USGS
Historical File
Topographic Division

3400

THIS MAP COMPLIES WITH NATIONAL MAP ACCURACY STANDARDS FOR SALE BY U. S. GEOLOGICAL SURVEY, DENVER, COLORADO 80225, OR RESTON, VIRGINIA 22092 A FOLDER DESCRIBING TOPOGRAPHIC MAPS AND SYMBOLS IS AVAILABLE ON REQUEST