

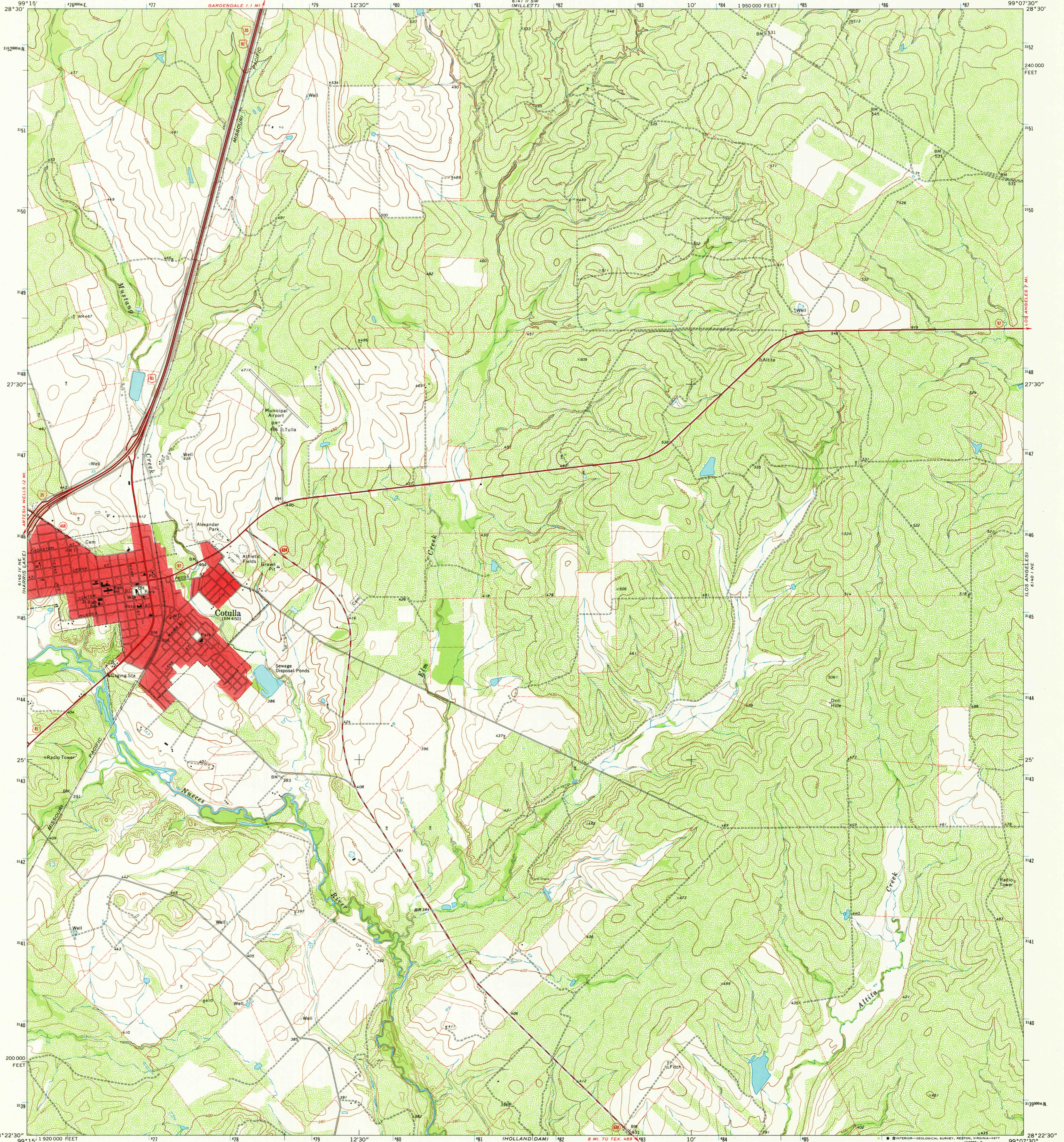
6 1/4 IN. X 5 1/2 IN.
WOODWARD

UNITED STATES
DEPARTMENT OF THE INTERIOR
GEOLOGICAL SURVEY

STATE OF TEXAS
TEXAS WATER DEVELOPMENT BOARD

COTULLA QUADRANGLE
TEXAS-LA SALLE CO.
7.5 MINUTE SERIES (TOPOGRAPHIC)
NW/4 COTULLA 15' QUADRANGLE

6 1/4 IN. X 5 1/2 IN.
(BURBANK)



Mapped, edited, and published by the Geological Survey

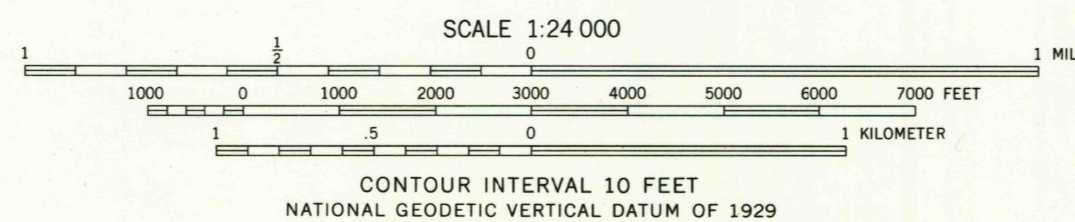
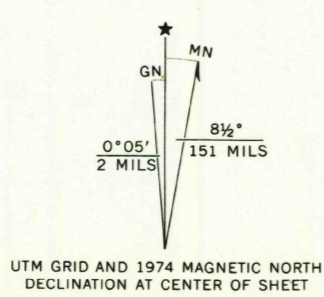
Control by USGS and NOS/NOAA

Topography by photogrammetric methods from aerial photographs taken 1973. Field checked 1974

Projection and 10,000-foot grid ticks: Texas coordinate system, south central zone (Lambert conformal conic) 1000-meter Universal Transverse Mercator grid ticks, zone 14, shown in blue. 1927 North American datum

Red tint indicates areas in which only landmark buildings are shown

Fine red dashed lines indicate selected fence lines



QUADRANGLE LOCATION

2899-143

ROAD CLASSIFICATION

Primary highway, hard surface	Light-duty road, hard or improved surface
Secondary highway, hard surface	Unimproved road
Interstate Route	U. S. Route
	State Route

USGS
Historical File
Topographic Division

COTULLA, TEX.
NW/4 COTULLA 15' QUADRANGLE
N2822.5-W9907.5/7.5
1974

NOV 10 1977
3330

AMS 6140 1 NW-SERIES V882

THIS MAP COMPLIES WITH NATIONAL MAP ACCURACY STANDARDS
FOR SALE BY U. S. GEOLOGICAL SURVEY, DENVER, COLORADO 80225, OR RESTON, VIRGINIA 22092
A FOLDER DESCRIBING TOPOGRAPHIC MAPS AND SYMBOLS IS AVAILABLE ON REQUEST