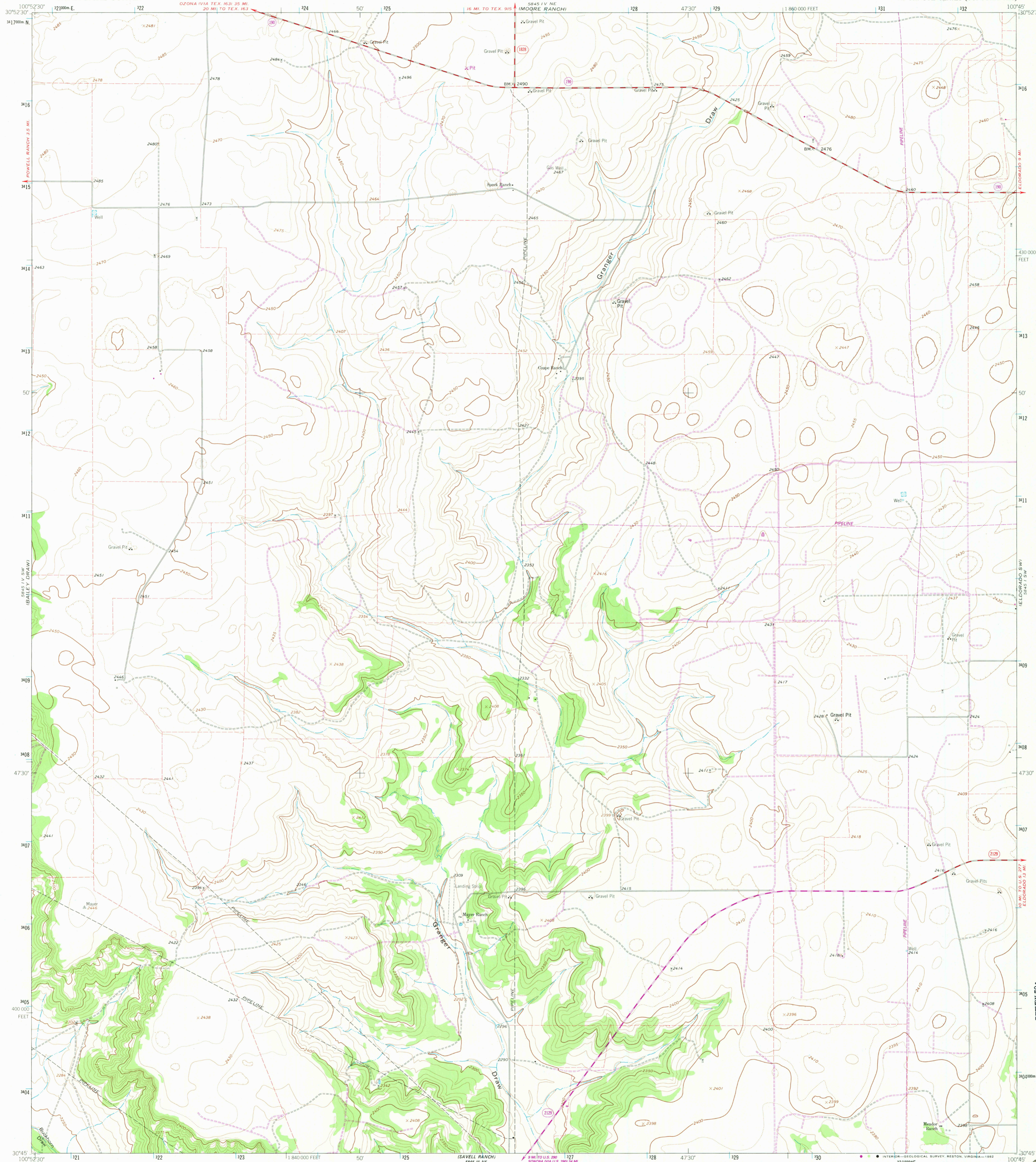


UNITED STATES
DEPARTMENT OF THE INTERIOR
GEOLOGICAL SURVEY

COUPE RANCH QUADRANGLE
TEXAS-SCHLEICHER CO.
7.5 MINUTE SERIES (TOPOGRAPHIC)



Mapped, edited, and published by the Geological Survey

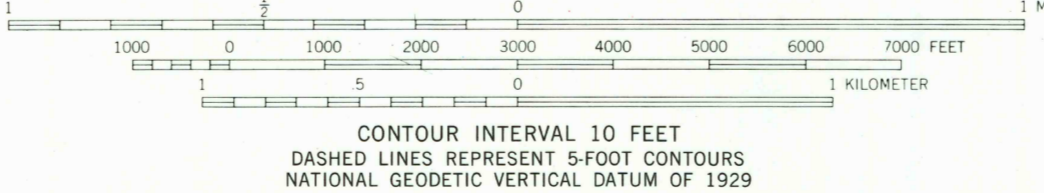
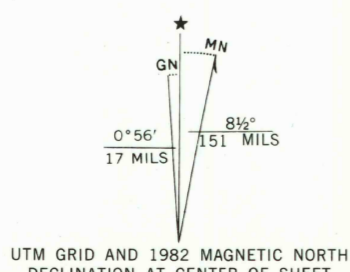
Control by USGS and NOS/NOAA

Topography by photogrammetric methods from aerial photographs taken 1963. Field checked 1964

Polyconic projection. 10,000-foot grid ticks based on Texas coordinate system, central zone. 1000-meter Universal Transverse Mercator grid ticks, zone 14, shown in blue 1927 North American Datum. To place on the predicted North American Datum 1983 move the projection lines 14 meters south and 36 meters east as shown by dashed corner ticks

Fine red dashed lines indicate selected fence lines

Revisions shown in purple and woodland compiled from aerial photographs taken 1979 and other sources
This information not field checked. Map edited 1982



THIS MAP COMPLIES WITH NATIONAL MAP ACCURACY STANDARDS
FOR SALE BY U. S. GEOLOGICAL SURVEY, DENVER, COLORADO 80225, OR RESTON, VIRGINIA 22092
A FOLDER DESCRIBING TOPOGRAPHIC MAPS AND SYMBOLS IS AVAILABLE ON REQUEST



QUADRANGLE LOCATION

3000-331

ROAD CLASSIFICATION
Primary highway, hard surface
Secondary highway, hard surface
Light-duty road, hard or improved surface
Unimproved road
Interstate Route
U. S. Route
State Route

COUPE RANCH, TEX.
N3045-W10045/7.5

1964
PHOTOREVISED 1982
DMA 5845 IV SE-SERIES V882

RETURN TO:
USGS AND HISTORICAL MAP ARCHIVES

MAR 25 1983

2650