

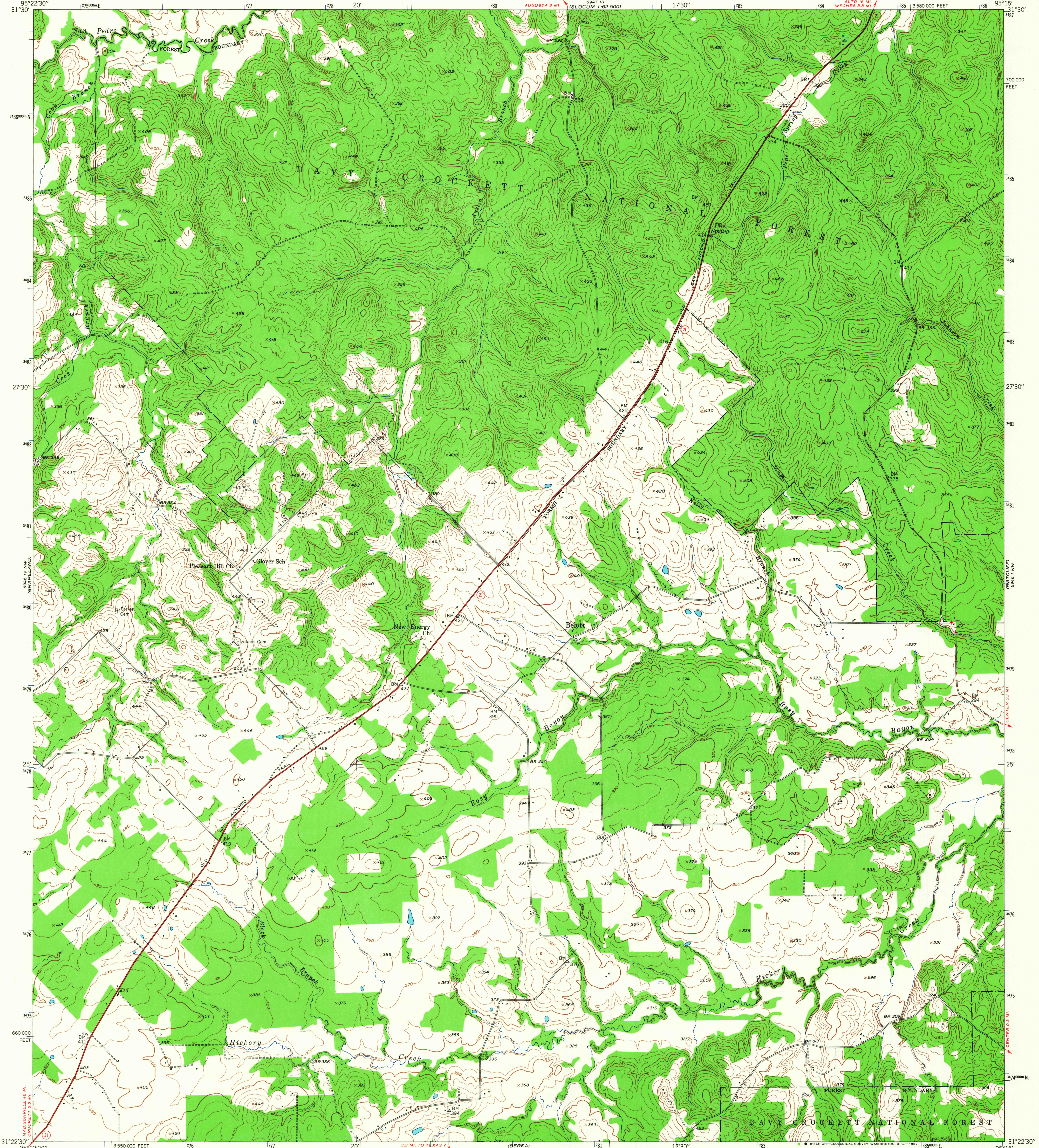
6946 IV NW  
(SLOCUM 1:62 500)

UNITED STATES  
DEPARTMENT OF THE INTERIOR  
GEOLOGICAL SURVEY

UNITED STATES  
DEPARTMENT OF THE ARMY  
CORPS OF ENGINEERS

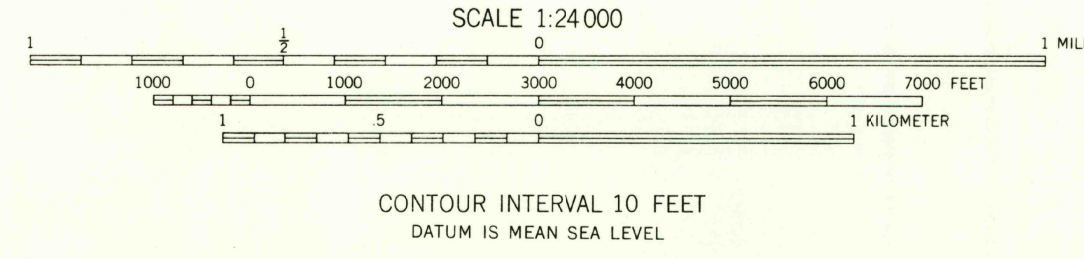
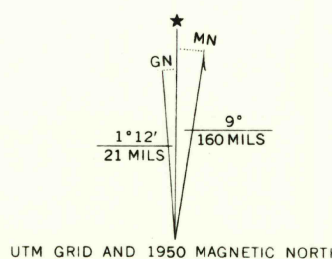
CROCKETT NE QUADRANGLE  
TEXAS-HOUSTON CO.  
7.5 MINUTE SERIES (TOPOGRAPHIC)

6947 I  
(AUTO 1:62 500)



CROCKETT  
6946 IV NW

Mapped, edited, and published by the Geological Survey  
Control by USGS and USC&GS  
Culture and drainage in part compiled from  
aerial photographs taken 1947  
Topography by plane-table methods 1950  
Polyconic projection. 1927 North American datum  
10,000-foot grid based on Texas coordinate system,  
central zone  
1000-meter Universal Transverse Mercator grid ticks,  
zone 15, shown in blue



ROAD CLASSIFICATION  
HARD-SURFACE ALL WEATHER ROADS DRY WEATHER ROADS  
Heavy-duty... LANE 16 LANE Improved dirt...  
Medium-duty... LANE 16 LANE Unimproved dirt...  
Loose-surface, graded, or narrow hard-surface...  
U. S. Route State Route

CROCKETT NE, TEX.  
N3122.5-W9515.7.5  
1950  
AMS 6946 IV NE-SERIES V882

THIS MAP COMPLIES WITH NATIONAL MAP ACCURACY STANDARDS  
FOR SALE BY U.S. GEOLOGICAL SURVEY, DENVER, COLORADO 80225 OR WASHINGTON, D. C. 20242  
A FOLDER DESCRIBING TOPOGRAPHIC MAPS AND SYMBOLS IS AVAILABLE ON REQUEST

1930  
OCT 11 1967