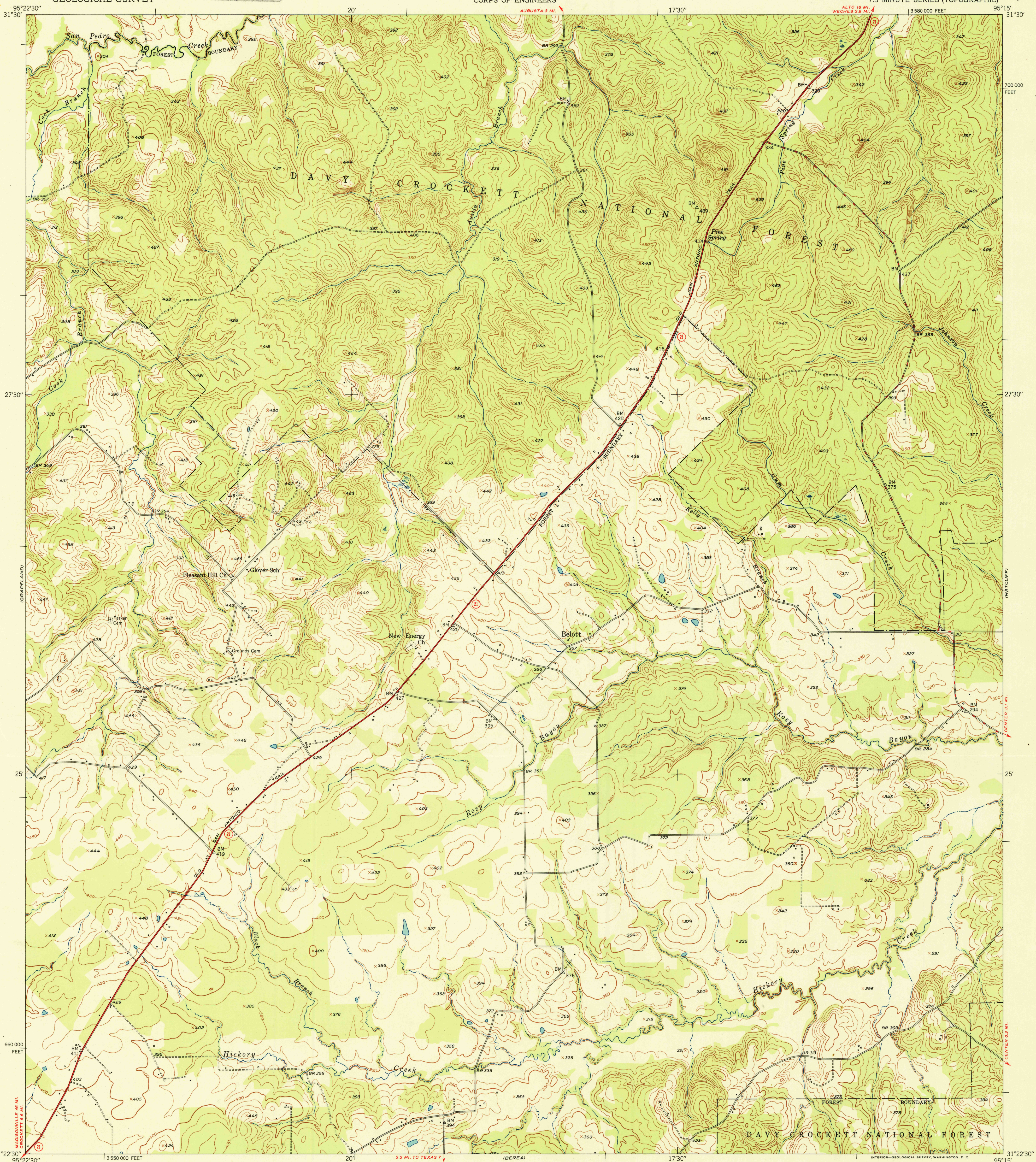
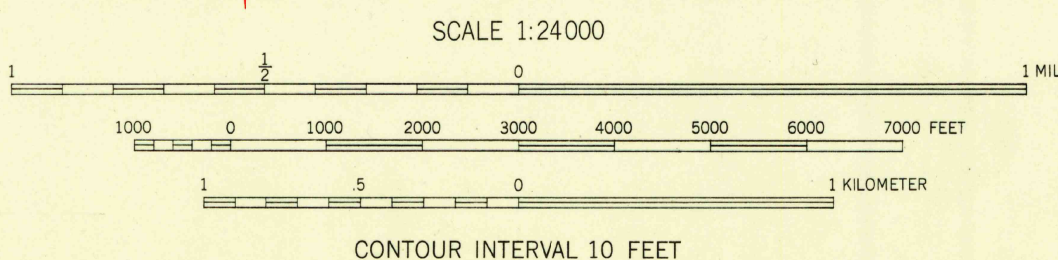
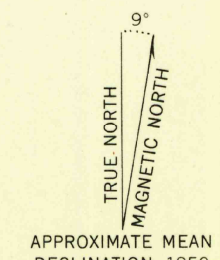


U.S.G.S.  
FILE COPY  
Inspection and Printing



Mapped, edited, and published by the Geological Survey  
Control by USGS and USC&GS  
Culture and drainage in part compiled from  
aerial photographs taken 1947  
Topography by plane-table methods 1950  
Polyconic projection. 1927 North American datum  
10,000-foot grid based on Texas coordinate system,  
central zone



SCALE 1:24000  
CONTOUR INTERVAL 10 FEET  
DATUM IS MEAN SEA LEVEL

ROAD CLASSIFICATION	
HARD-SURFACE ALL WEATHER ROADS	DRY WEATHER ROADS
Heavy-duty <b>LANE LANE</b>	Improved dirt
Medium-duty <b>LANE LANE</b>	Unimproved dirt
Loose-surface, graded, or narrow hard-surface	
U. S. Route	State Route

U.S.G.S.  
FILE COPY  
Inspection and Printing

CROCKETT NE, TEX.  
N3122.5-W9515/7.5

EDITION OF 1951

THIS MAP COMPLIES WITH NATIONAL MAP ACCURACY STANDARDS  
FOR SALE BY U. S. GEOLOGICAL SURVEY, FEDERAL CENTER, DENVER, COLORADO OR WASHINGTON 25, D. C.  
A FOLDER DESCRIBING TOPOGRAPHIC MAPS AND SYMBOLS IS AVAILABLE ON REQUEST

APR 10 1951 2110