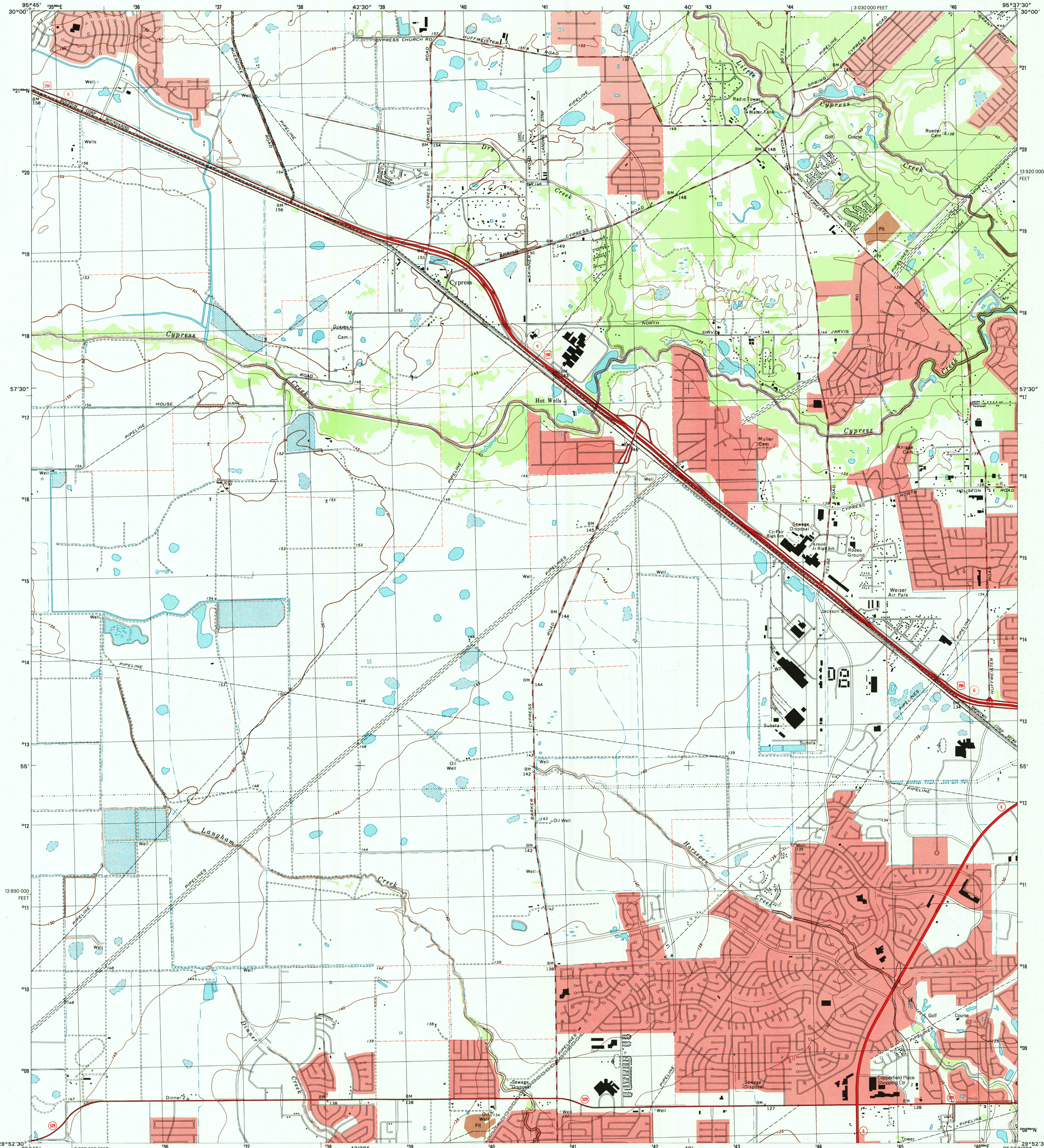




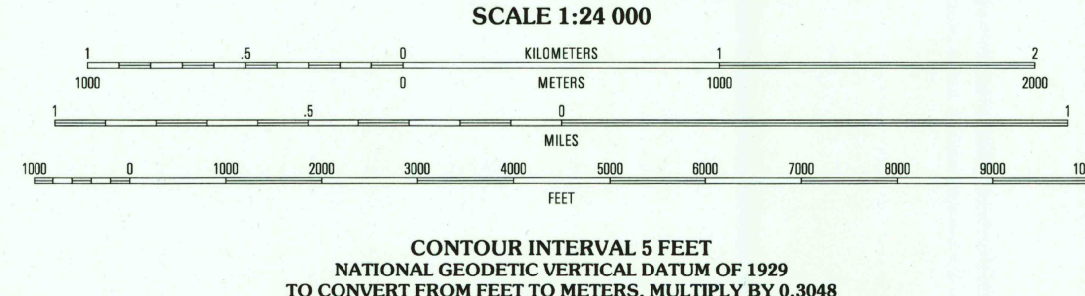
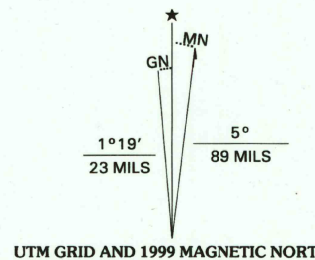
U.S. DEPARTMENT OF THE INTERIOR
U.S. GEOLOGICAL SURVEY



CYPRESS QUADRANGLE
TEXAS-HARRIS CO.
7.5-MINUTE SERIES (TOPOGRAPHIC)



Produced by the United States Geological Survey
Topography enlarged from 1:62 500-scale Addicks quadrangle dated 1955. Planimetry derived from imagery taken 1995
Survey control current as of 1970
North American Datum of 1983 (NAD 83). Projection and 1000-meter grid: Universal Transverse Mercator, zone 15
10 000-foot ticks: Texas Coordinate System of 1983 (south central zone)
North American Datum of 1927 (NAD 27) is shown by dashed corner ticks. The values of the shift between NAD 83 and NAD 27 for 7.5-minute intersections are obtainable from National Geodetic Survey NADCON software
Landmark buildings verified 1970



QUADRANGLE LOCATION
2995-343

1	2	3
4	5	6
7	8	9

ROAD CLASSIFICATION
Primary highway hard surface
Secondary highway hard surface
Light-duty road, hard or improved surface
Unimproved road
Interstate Route
U.S. Route
State Route

RECEIVED
JAN 31 2000
USGS NMD
HISTORICAL MAP ARCHIVES
CYPRESS, TX
1995
NIMA 6843 1 NW-SERIES V882

THIS MAP COMPLIES WITH NATIONAL MAP ACCURACY STANDARDS
FOR SALE BY U.S. GEOLOGICAL SURVEY, P.O. BOX 25286, DENVER, COLORADO 80225
A FOLDER DESCRIBING TOPOGRAPHIC MAPS AND SYMBOLS IS AVAILABLE ON REQUEST

