

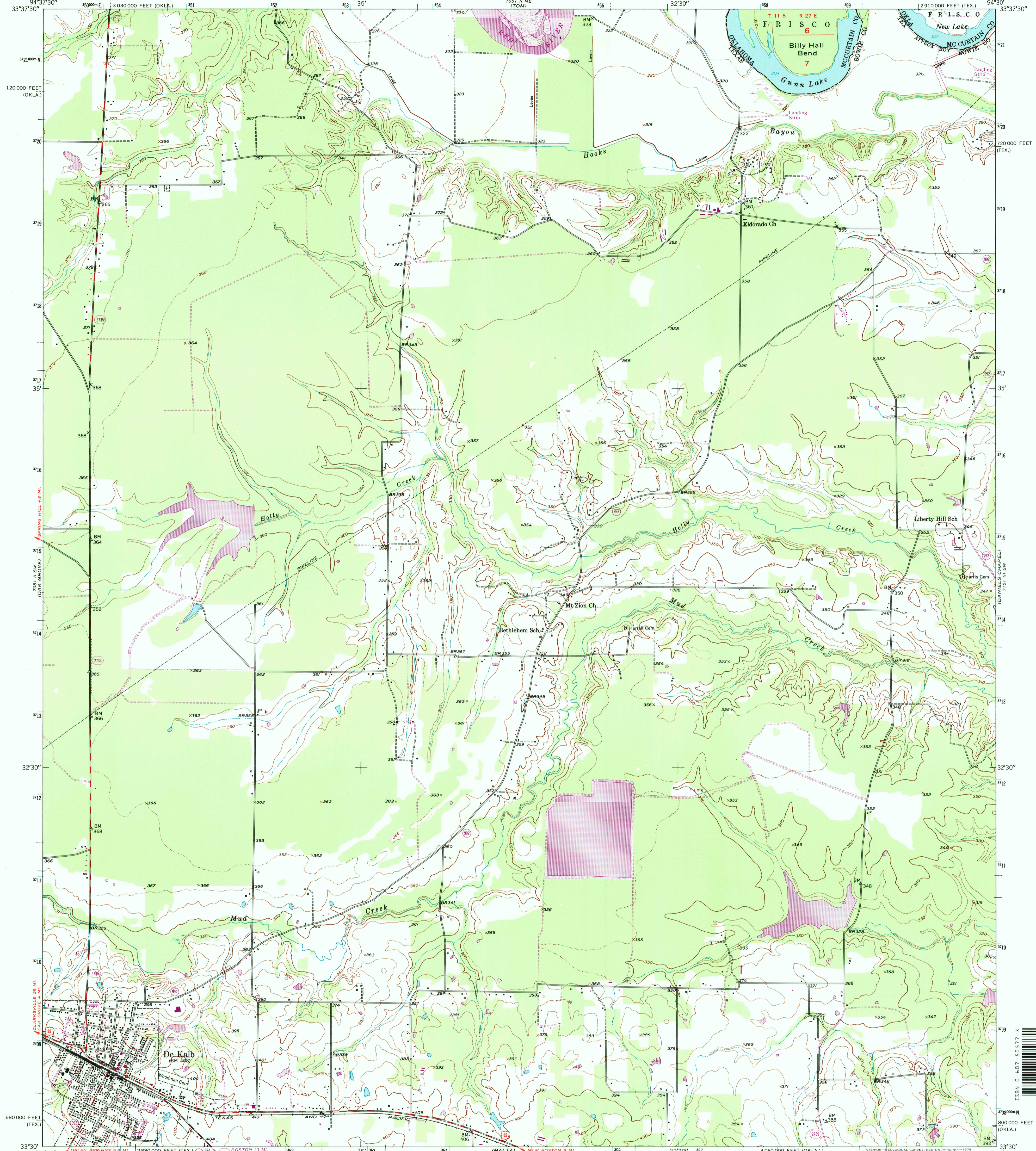
7051 II NE (TOM)



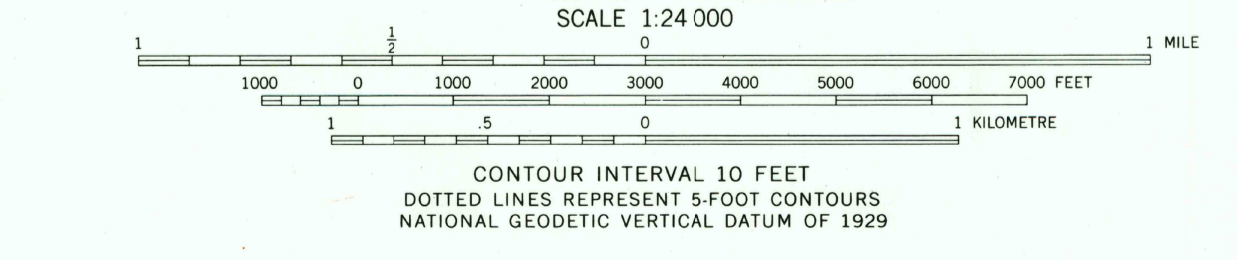
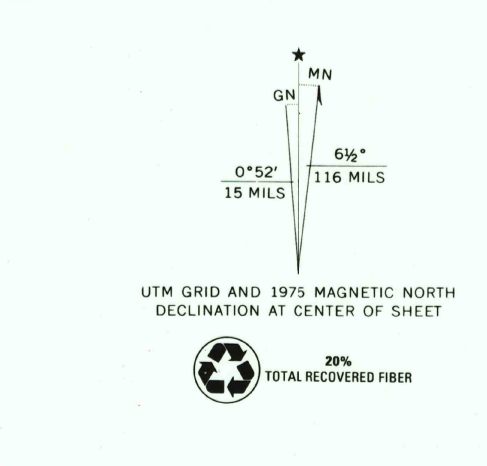
U.S. DEPARTMENT OF THE INTERIOR
U.S. GEOLOGICAL SURVEY

DE KALB QUADRANGLE
TEXAS-OKLAHOMA
7.5 MINUTE SERIES (TOPOGRAPHIC)

7151 II SW (FOREMAN)



Mapped, edited, and published by the Geological Survey
Control by USCE, USGS, and USC&GS
Culture and drainage in part compiled from aerial photographs taken 1948
Topography by plane-table methods 1950 and in part by United States Corps of Engineers
Polyconic projection 1927 North American datum
10,000-foot grids based on Texas coordinate system, north central zone and Oklahoma coordinate system, south zone
1000-metre Universal Transverse Mercator grid ticks, zone 15, shown in blue
Revisions shown in purple compiled from aerial photographs taken 1975. This information not field checked



RECEIVED
APR 30 2000
USGS M&D
HISTORICAL MAP ARCHIVES

ROAD CLASSIFICATION
Heavy-duty... 4 LANE 16 LANE Light duty...
Medium-duty... 4 LANE 16 LANE Unimproved dirt
U. S. Route State Route

DE KALB, TEX.-OKLA.
N3330-W9430/7.5
1950
PHOTOREVISED 1975
AMS 7051 II SE-SERIES V882



NEW BOSTON