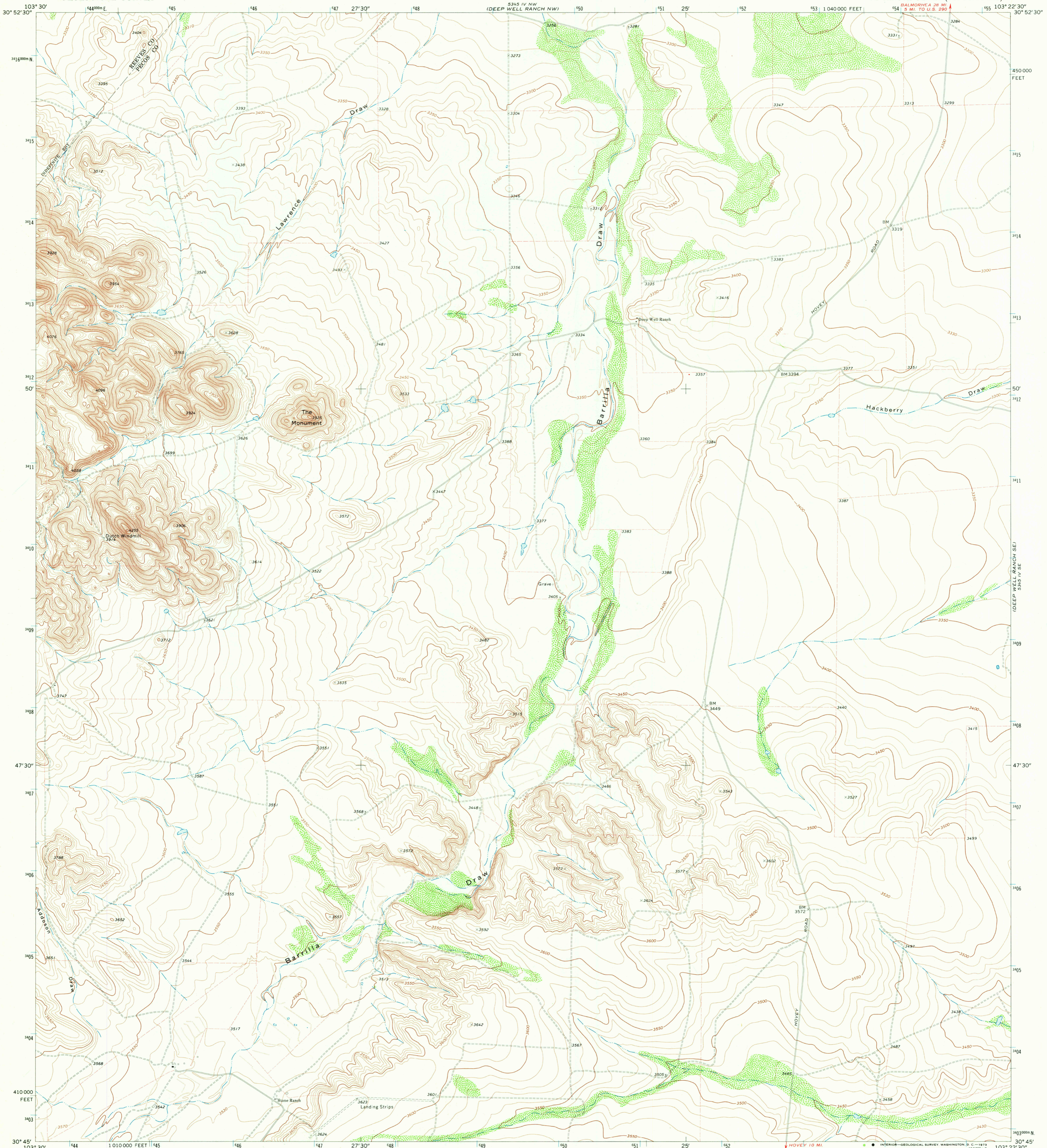
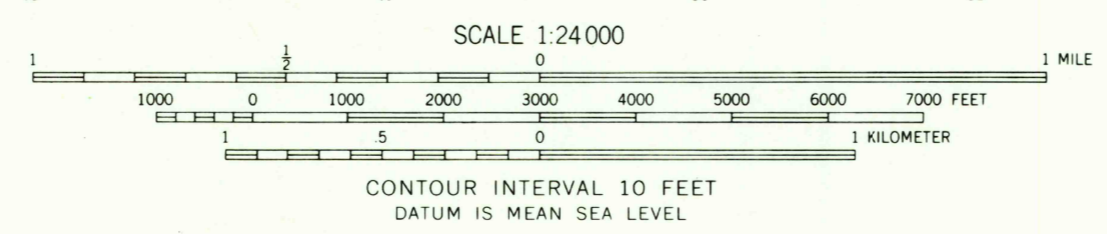
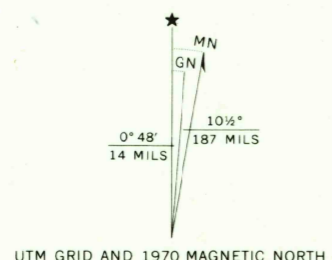


5845' N. M.
TUCKER HILL



Mapped, edited, and published by the Geological Survey
Control by USGS and USCG&S
Topography by photogrammetric methods from aerial
photographs taken 1969. Field checked 1970.
Polyconic projection. 1927 North American datum
10,000-foot grid based on Texas coordinate system,
central zone
1000-meter Universal Transverse Mercator grid ticks,
zone 13, shown in blue
Fine red dashed lines indicate selected fence lines



ROAD CLASSIFICATION

Primary highway, hard surface	Light-duty road, hard or improved surface
Secondary highway, hard surface	Unimproved road
○ Interstate Route	○ U. S. Route
	○ State Route

THIS MAP COMPLIES WITH NATIONAL MAP ACCURACY STANDARDS
FOR SALE BY U. S. GEOLOGICAL SURVEY, DENVER, COLORADO 80225, OR WASHINGTON, D. C. 20242
A FOLDER DESCRIBING TOPOGRAPHIC MAPS AND SYMBOLS IS AVAILABLE ON REQUEST

USGS
HISTORICAL FILE
TOPOGRAPHIC DIVISION

DEEP WELL RANCH, TEX.
N3045-W10322.5/7.5
1970
AMS 5345 IV SW-SERIES V882
2790
APR 30 1973