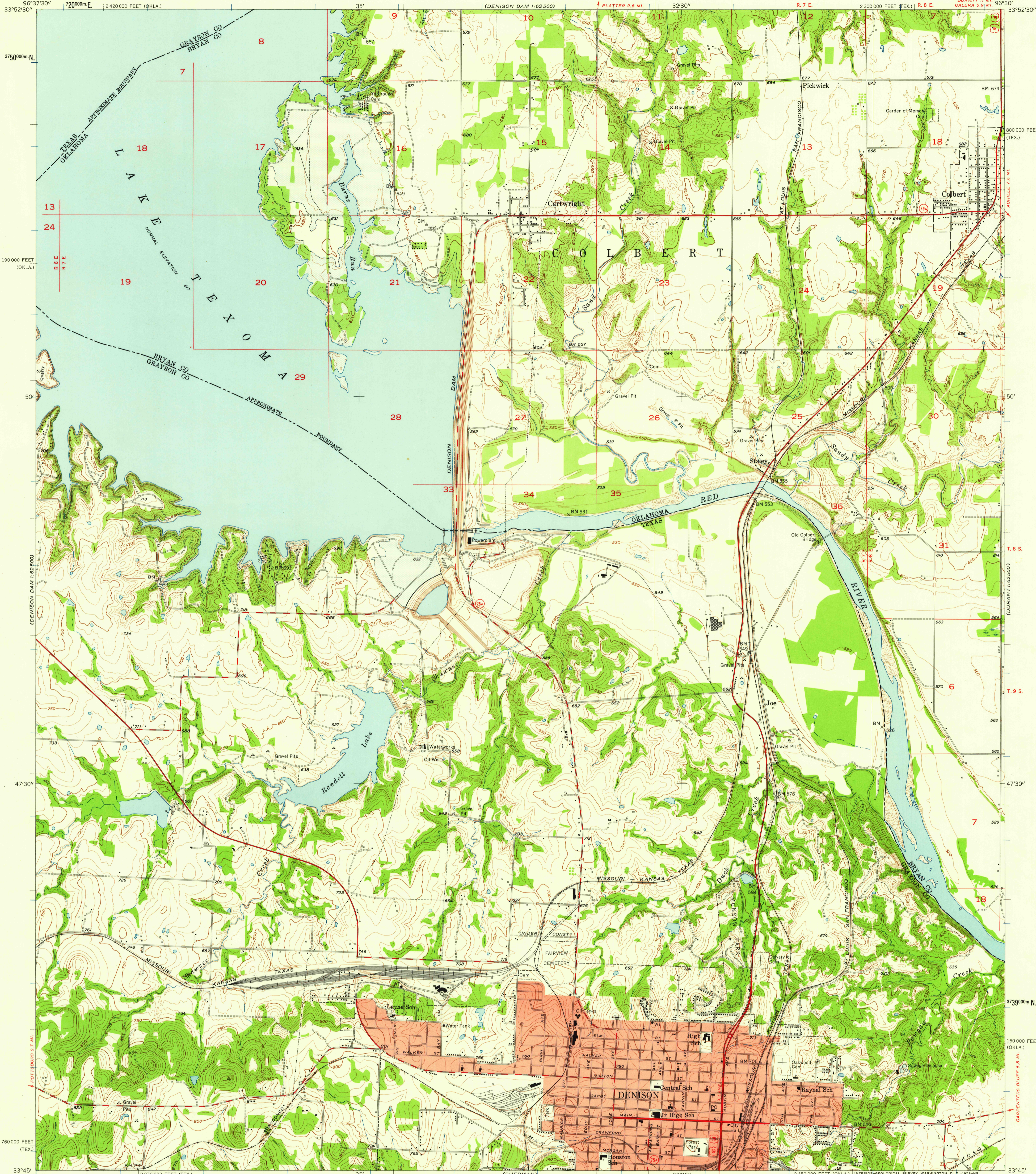


UNITED STATES  
DEPARTMENT OF THE INTERIOR  
GEOLOGICAL SURVEY

DENISON DAM QUADRANGLE  
TEXAS—OKLAHOMA  
7.5 MINUTE SERIES (TOPOGRAPHIC)  
SE/4 DENISON DAM 15' QUADRANGLE



Mapped, edited, and published by the Geological Survey

Control by USGS, USC&GS, and USCE

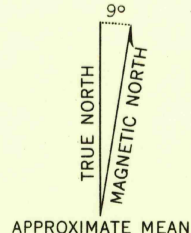
Topography from aerial photographs by Kelsch plotter  
Aerial photographs taken 1955-1956. Field check 1957

Polyconic projection. 1927 North American datum  
10,000-foot grids based on Texas coordinate system,  
north central zone and Oklahoma coordinate system, south zone  
1000-meter Universal Transverse Mercator grid ticks,  
zone 14, shown in blue

Red tint indicates area in which only  
landmark buildings are shown

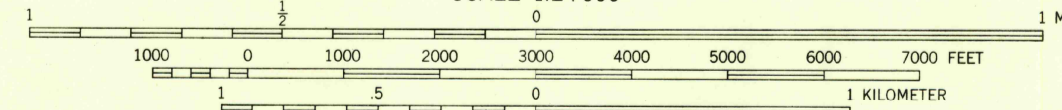
Areas covered by dashed light-blue pattern  
are subject to controlled inundation

Maximum elevation 640 feet. Normal elevation 617



APPROXIMATE MEAN  
DECLINATION, 1957

SCALE 1:24000



CONTOUR INTERVAL 10 FEET  
DATUM IS MEAN SEA LEVEL

THIS MAP COMPLIES WITH NATIONAL MAP ACCURACY STANDARDS  
FOR SALE BY U. S. GEOLOGICAL SURVEY, DENVER 2, COLORADO OR WASHINGTON 25, D. C.  
A FOLDER DESCRIBING TOPOGRAPHIC MAPS AND SYMBOLS IS AVAILABLE ON REQUEST



QUADRANGLE LOCATION

U.S.G.S.  
FILE COPY  
TOPOGRAPHIC DIVISION

ROAD CLASSIFICATION  
Heavy-duty ——— Light-duty ———  
Medium-duty ——— Unimproved dirt ———  
U. S. Route ——— State Route ———

DENISON DAM, TEX.—OKLA.  
SE/4 DENISON DAM 15' QUADRANGLE  
N3345—W9630/7.5

1957

APR 14 1959

3660