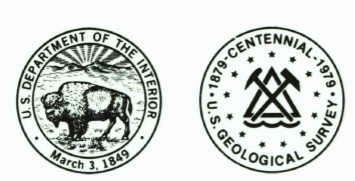


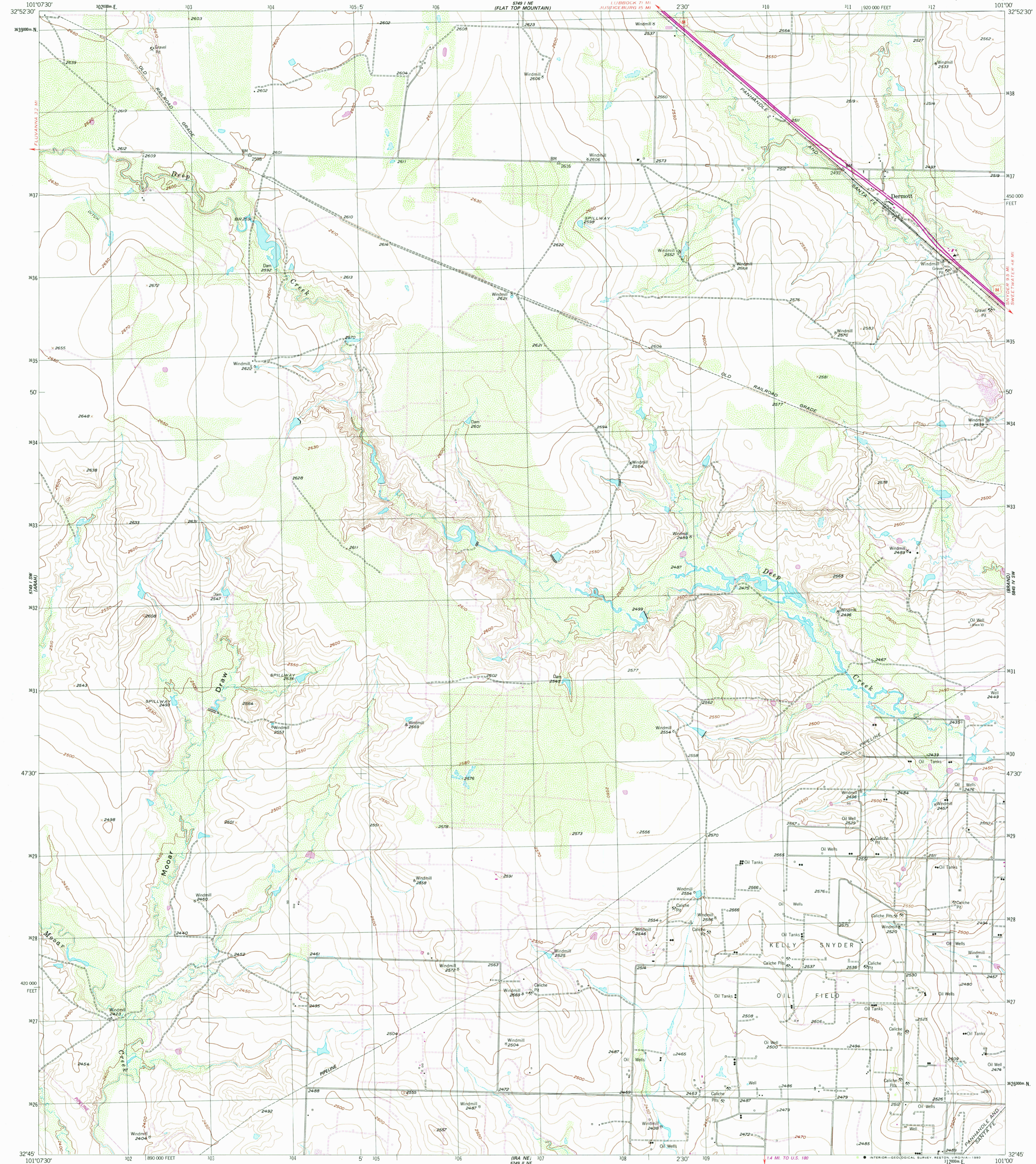
FLUVIANA 12 MI

UNITED STATES DEPARTMENT OF THE INTERIOR GEOLOGICAL SURVEY

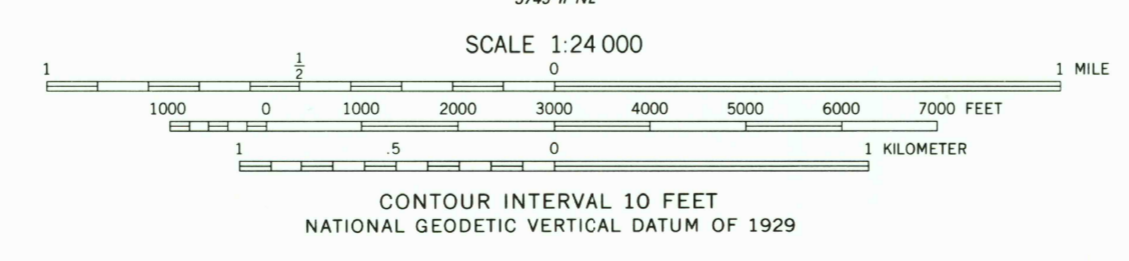
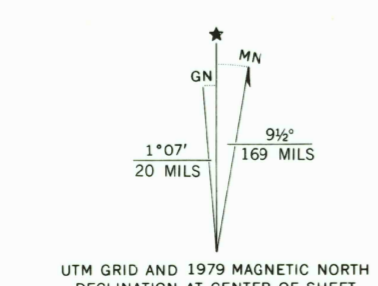


DERMOTT QUADRANGLE TEXAS-SCURRY CO. 7.5 MINUTE SERIES (TOPOGRAPHIC)

5749 N.E. (FLAT TOP MOUNTAIN) LUBBOCK 7 MI JUSTICEBURG 15 MI



Mapped, edited, and published by the Geological Survey. Control by USGS and NOS/NOAA. Topography from aerial photographs by A-8 plotter. Aerial photographs taken 1952. Field check 1954. Polyconic projection. 1927 North American datum. 10,000-foot grid based on Texas coordinate system, north central zone. 1000-meter Universal Transverse Mercator grid, zone 14. 1927 North American datum. Revisions shown in purple compiled from aerial photographs taken 1977 and other source data. This information not field checked. Map edited 1979.



ROAD CLASSIFICATION table with columns for road types and surfaces. Includes symbols for Interstate Route, U. S. Route, and State Route.

THIS MAP COMPLIES WITH NATIONAL MAP ACCURACY STANDARDS FOR SALE BY U. S. GEOLOGICAL SURVEY, DENVER, COLORADO 80225, OR RESTON, VIRGINIA 22092. A FOLDER DESCRIBING TOPOGRAPHIC MAPS AND SYMBOLS IS AVAILABLE ON REQUEST.

3201-441

USGS Historical File Topographic Division

DERMOTT, TEX. N3245-W10100/7.5 1954 PHOTOREVISED 1979 DMA 5749 1 SE-SERIES V882

MAY - 1 1980

1640