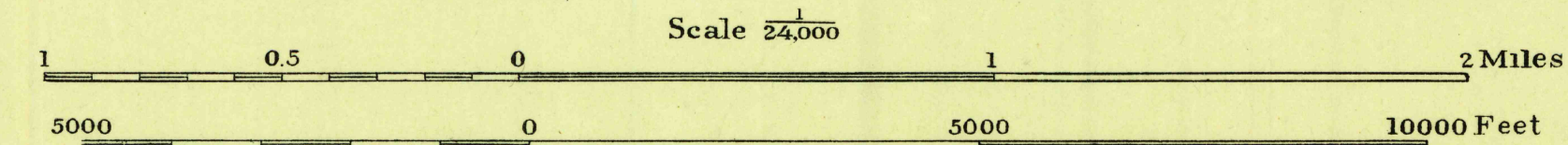


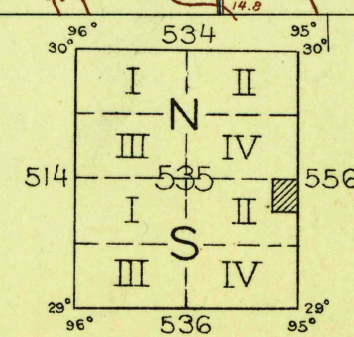
H. H. Hodgeson, Division Engineer  
Topography by S. T. Fenick and E. K. Van Zandt  
Culture and drainage in part compiled from aerial photographs  
taken by Air Corps, U. S. Army  
Control by U. S. Coast and Geodetic Survey and  
Texas Reclamation Department  
Surveyed in 1929

Van Zandt
Fenick

TRUE NORTH  
MAGNETIC NORTH  
APPROXIMATE MEAN  
DECLINATION, 1929



Contour interval 1 foot  
Datum is mean sea level



Polyconic projection. North American datum  
5000 yard grid based upon U. S. zone system, D  
DICKINSON, TEX.  
USGS  
Historical File  
Topographic Division