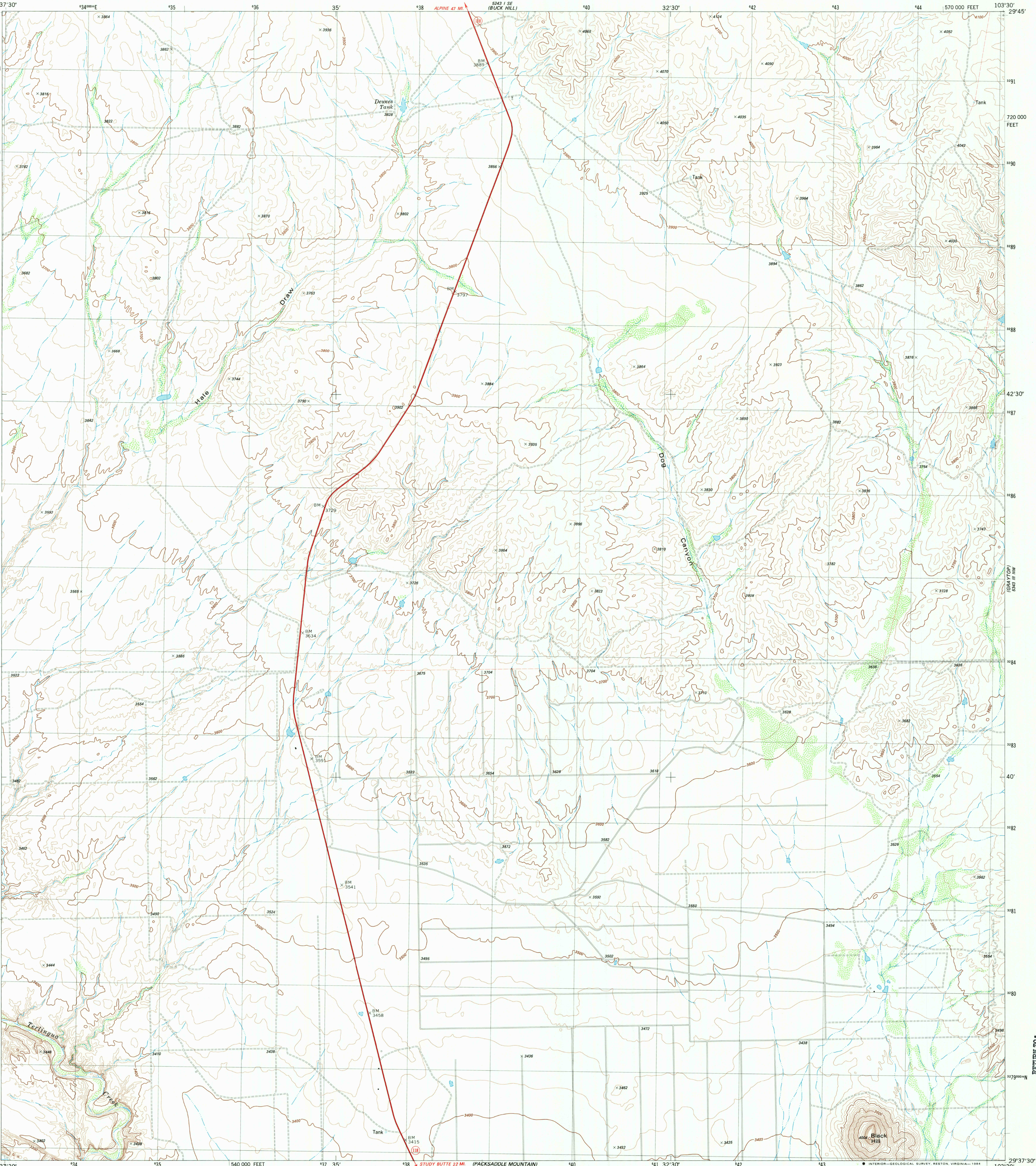
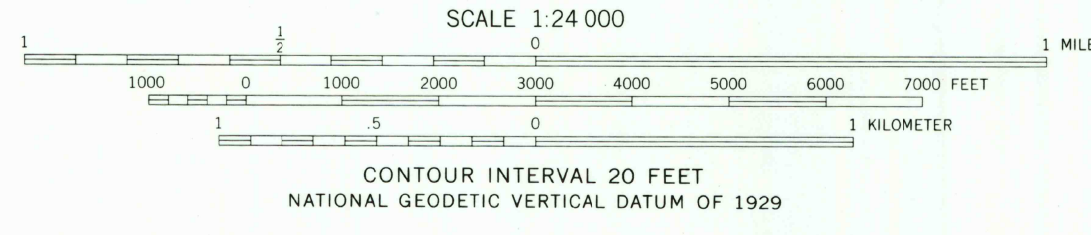
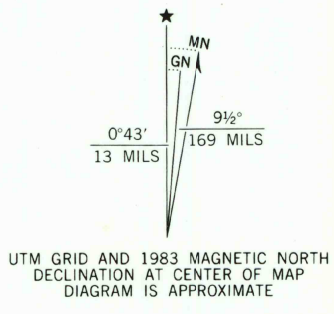


UNITED STATES  
DEPARTMENT OF THE INTERIOR  
GEOLOGICAL SURVEY

DOG CANYON QUADRANGLE  
TEXAS-BREWSTER CO.  
7.5 MINUTE SERIES (TOPOGRAPHIC)  
NE/4 AGUA FRIA 15' QUADRANGLE



Mapped, edited, and published by the Geological Survey  
Control by USGS and NOS/NOAA  
Topography by photogrammetric methods from aerial photographs  
taken 1974. Field checked 1976. Map edited 1983  
Projection and 10,000-foot grid ticks: Texas  
coordinate system, south central zone (Lambert conformal conic)  
1000-meter Universal Transverse Mercator grid, zone 13  
1927 North American Datum  
To place on the predicted North American Datum 1983  
move the projection lines 17 meters south and  
43 meters east as shown by dashed corner ticks  
Fine red dashed lines indicate selected fence lines



ROAD CLASSIFICATION	
Primary highway, hard surface	Light-duty road, hard or improved surface
Secondary highway, hard surface	Unimproved road
Interstate Route	U. S. Route
	State Route

DOG CANYON, TEX.  
NE/4 AGUA FRIA 15' QUADRANGLE  
N2937.5-W10330/7.5

1983

DMA 5243 II NE-SERIES V882

THIS MAP COMPLIES WITH NATIONAL MAP ACCURACY STANDARDS  
FOR SALE BY U. S. GEOLOGICAL SURVEY, DENVER, COLORADO 80225, OR RESTON, VIRGINIA 22092  
A FOLDER DESCRIBING TOPOGRAPHIC MAPS AND SYMBOLS IS AVAILABLE ON REQUEST

2903-314

RETURN TO:  
USGS AND HISTORICAL MAP ARCHIVES