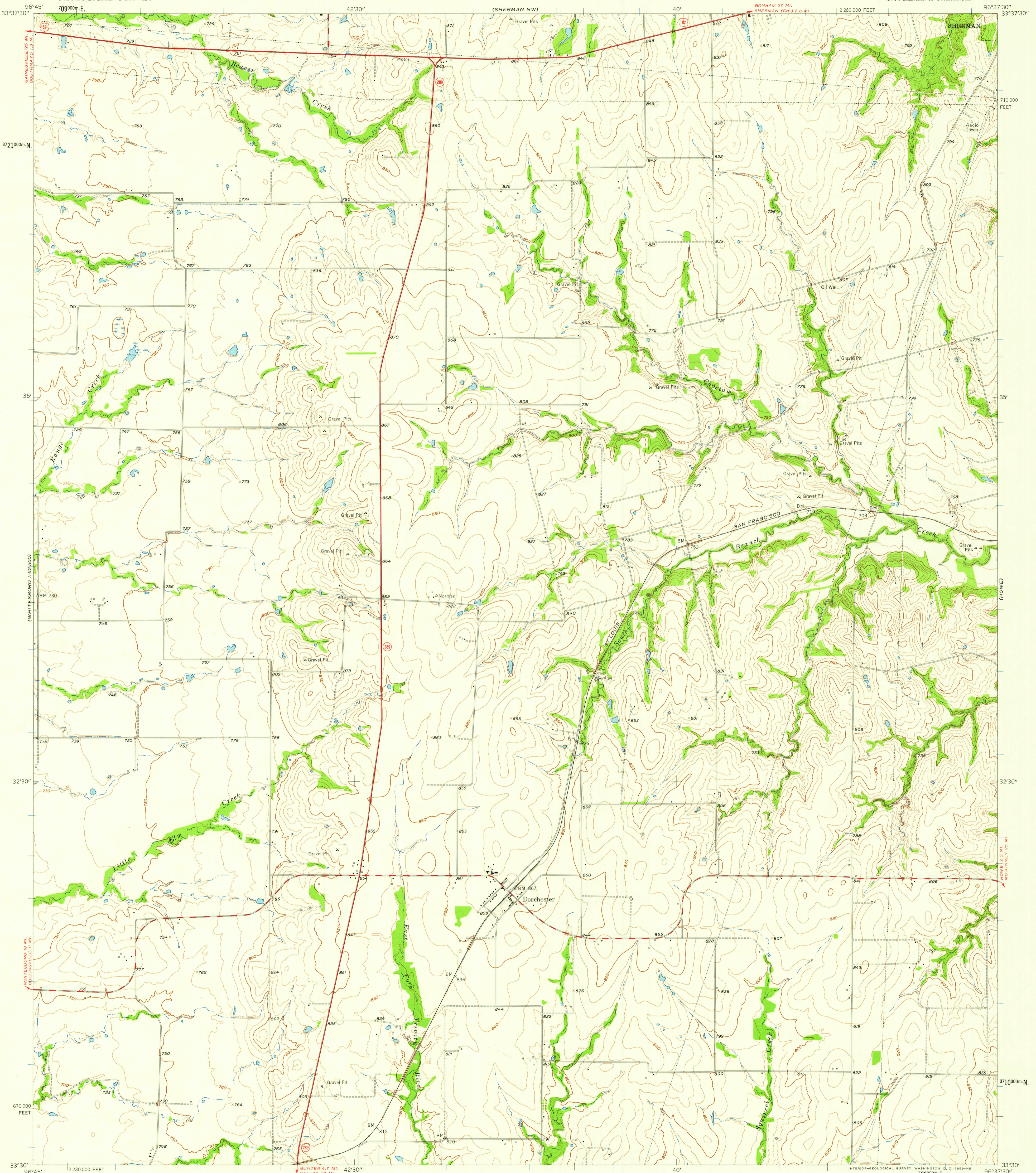


WHITESBORO
1:12,500

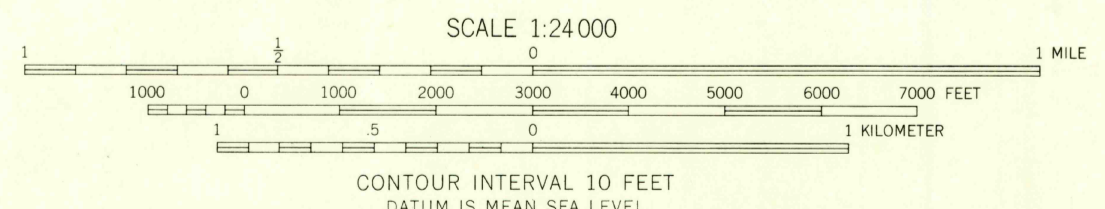
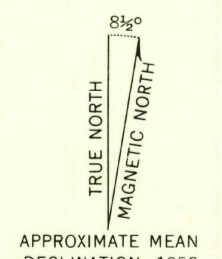
UNITED STATES
DEPARTMENT OF THE INTERIOR
GEOLOGICAL SURVEY

DORCHESTER QUADRANGLE
TEXAS—GRAYSON CO.
7.5 MINUTE SERIES (TOPOGRAPHIC)
SW 1/4 SHERMAN 15' QUADRANGLE

(SHERMAN)



Mapped, edited, and published by the Geological Survey
Control by USGS and USC&GS
Topography from aerial photographs by Kelsch plotter
Aerial photographs taken 1955-1956. Field check 1957-1958
Polyconic projection. 1927 North American datum
10,000-foot grid based on Texas coordinate system, north central zone
1000-meter Universal Transverse Mercator grid ticks,
zone 14, shown in blue



CONTOUR INTERVAL 10 FEET
DATUM IS MEAN SEA LEVEL



ROAD CLASSIFICATION	
Heavy-duty	Light-duty
Medium-duty	Unimproved dirt
U. S. Route	State Route

THIS MAP COMPLIES WITH NATIONAL MAP ACCURACY STANDARDS
FOR SALE BY U. S. GEOLOGICAL SURVEY, DENVER 2, COLORADO OR WASHINGTON 25, D. C.
A FOLDER DESCRIBING TOPOGRAPHIC MAPS AND SYMBOLS IS AVAILABLE ON REQUEST

U.S.G.S.
FILE COPY
TOPOGRAPHIC DIVISION

DORCHESTER, TEX.
SW 1/4 SHERMAN 15' QUADRANGLE
N 3330—W 9637.5/7.5

1958

MAR - 4 1959

2865