

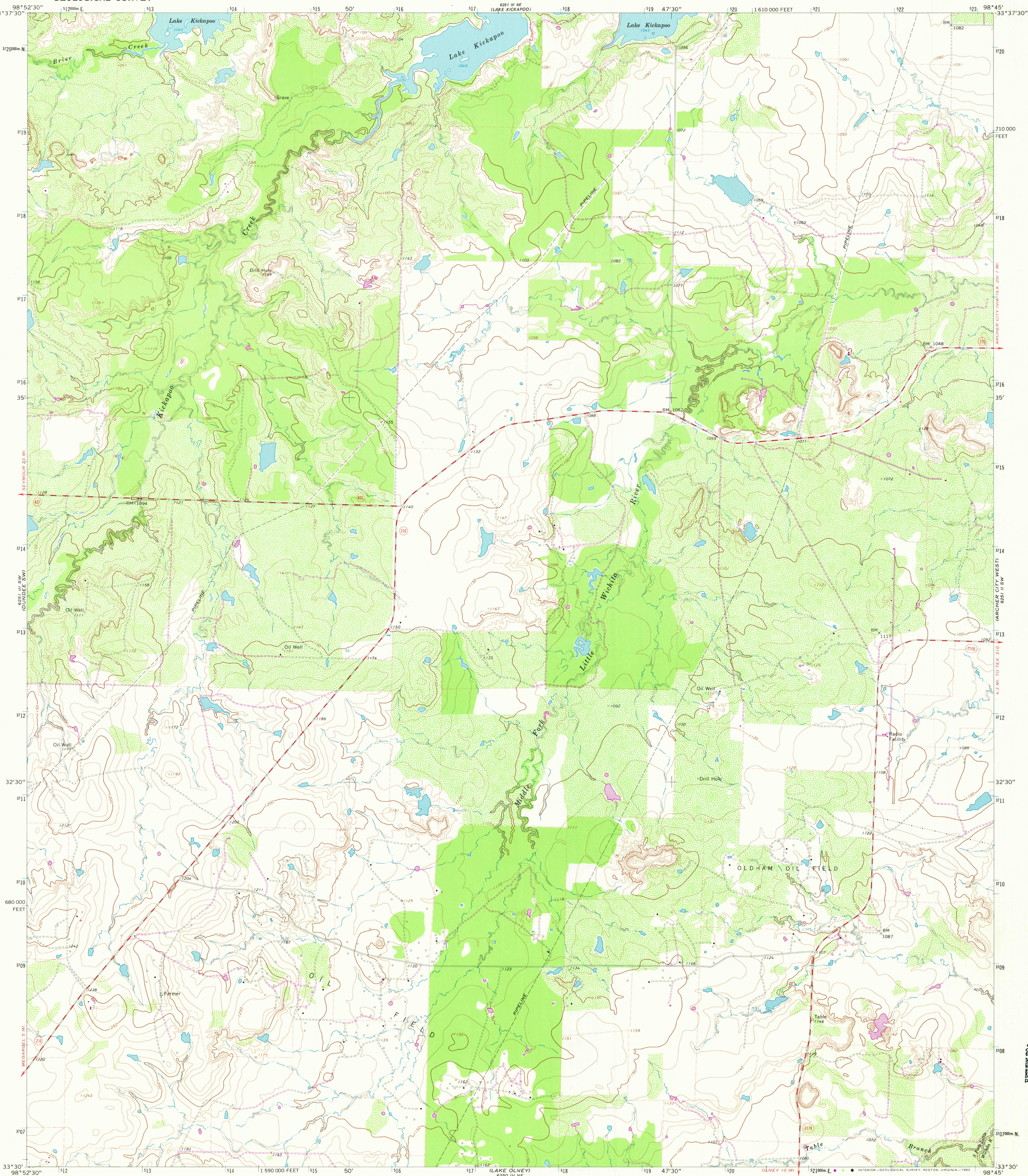
6251 III SE  
DUNDEE SE

UNITED STATES  
DEPARTMENT OF THE INTERIOR  
GEOLOGICAL SURVEY

STATE OF TEXAS  
TEXAS WATER DEVELOPMENT BOARD

DUNDEE SE QUADRANGLE  
TEXAS-ARCHER CO.  
7.5 MINUTE SERIES (TOPOGRAPHIC)

6251 III SE  
DUNDEE SE



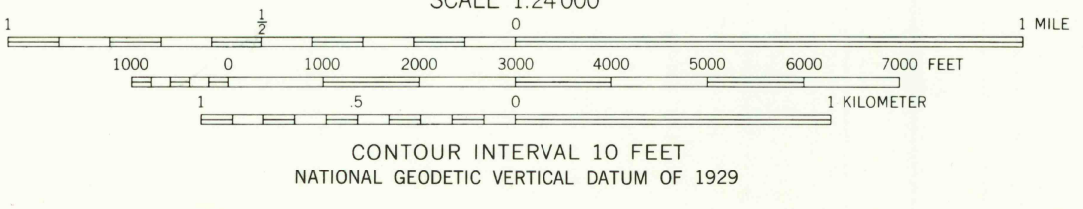
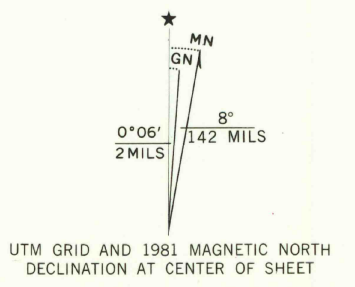
Mapped, edited, and published by the Geological Survey  
Control by USGS and NOS/NOAA

Topography by photogrammetric methods from aerial  
photographs taken 1963. Field checked 1964

Polyconic projection. 10,000-foot grid ticks based on Texas  
coordinate system, north central zone. 1000-meter Universal  
Transverse Mercator grid ticks, zone 14, shown in blue  
1927 North American Datum. To place on the predicted  
North American Datum 1983 move the projection lines 7 meters  
south and 32 meters east as shown by dashed corner ticks

Fine red dashed lines indicate selected fence lines where  
generally visible on aerial photographs. This information is unchecked

Revisions shown in purple and woodland compiled from aerial  
photographs taken 1979 and other sources. This information  
not field checked. Map edited 1981



CONTOUR INTERVAL 10 FEET  
NATIONAL GEODETIC VERTICAL DATUM OF 1929



QUADRANGLE LOCATION

ROAD CLASSIFICATION  
Medium-duty ——— Light-duty ———  
Unimproved dirt - - - - -  
State Route ○

THIS MAP COMPLIES WITH NATIONAL MAP ACCURACY STANDARDS  
FOR SALE BY U. S. GEOLOGICAL SURVEY, DENVER, COLORADO 80225, OR RESTON, VIRGINIA 22092  
A FOLDER DESCRIBING TOPOGRAPHIC MAPS AND SYMBOLS IS AVAILABLE ON REQUEST

3398-321

SEP 23 1982  
DUNDEE SE, TEX.

N3330-W9845/7.5

1964  
PHOTOREVISED 1981  
DMA 6251 III SE-SERIES V882

2400

RETURN TO:  
USGS AND HISTORICAL MAP ARCHIVES

6251 III SE  
DUNDEE SE