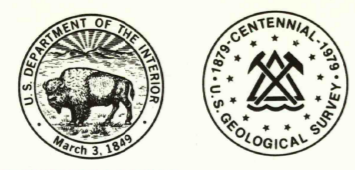


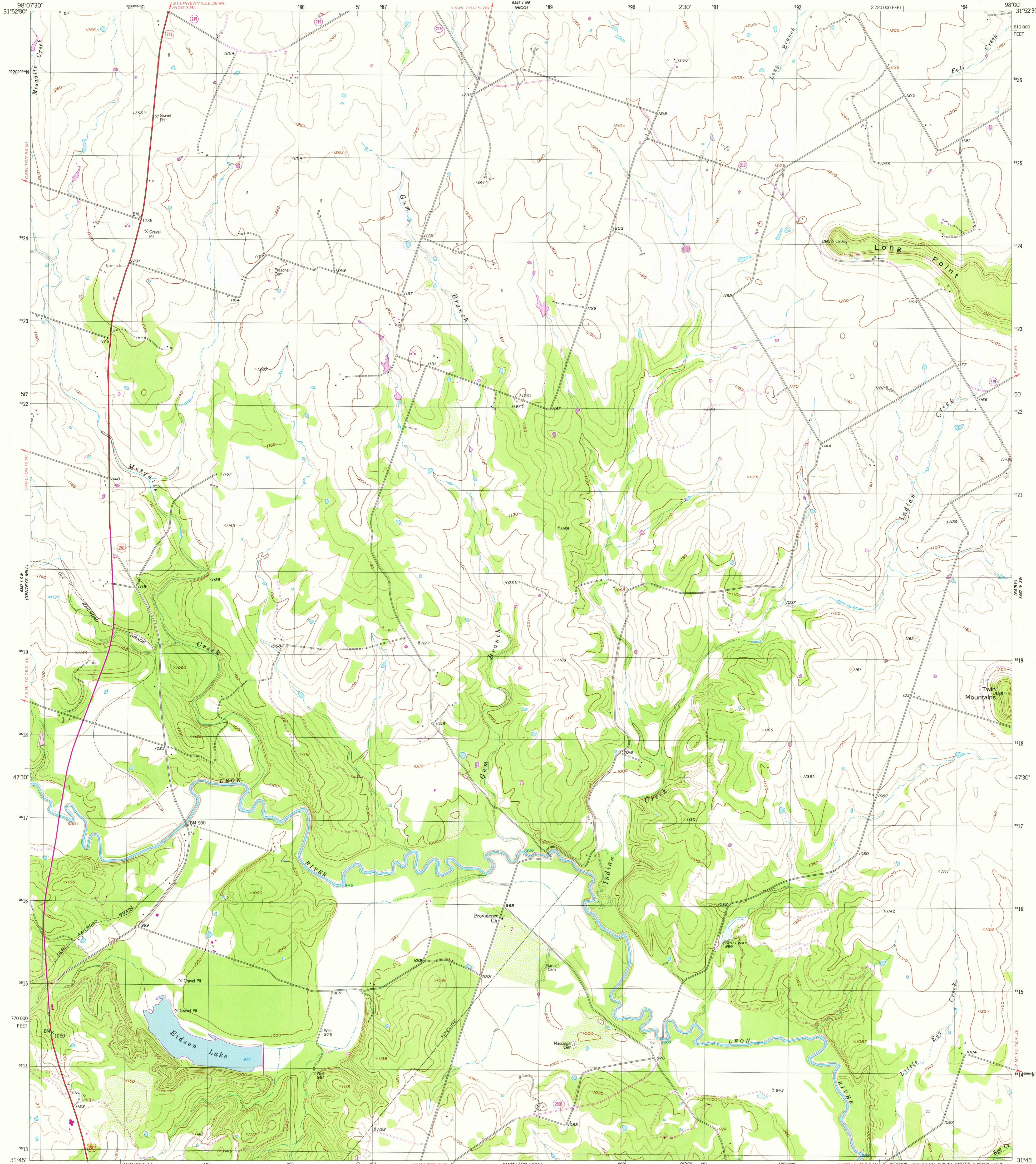
649 1/4 NW
1958M
649 1/4 NW

UNITED STATES
DEPARTMENT OF THE INTERIOR
GEOLOGICAL SURVEY

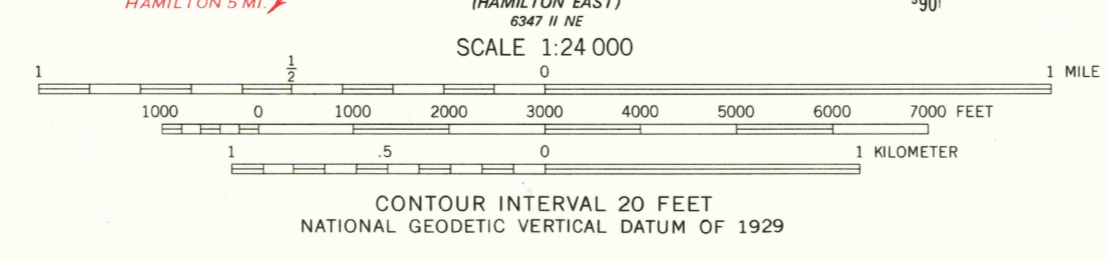


EIDSON LAKE QUADRANGLE
TEXAS-HAMILTON CO.
7.5 MINUTE SERIES (TOPOGRAPHIC)
SE/4 HICO 15' QUADRANGLE

649 1/4 NW
1958M
649 1/4 NW



Maped, edited, and published by the Geological Survey
Control by USGS and USC&GS
Topography from aerial photographs by ER-55 plotter
Aerial photographs taken 1955. Field check 1956
Polyconic projection. 1927 North American datum
10,000-foot grid based on Texas coordinate system,
central zone
1000-meter Universal Transverse Mercator grid, zone 14
Unchecked elevations are shown in brown
Revisions shown in purple compiled from aerial photographs
taken 1976 and other source data. This information not
field checked. Map edited 1979



ROAD CLASSIFICATION

Primary highway, all weather, hard surface	Light-duty road, all weather, improved surface
Secondary highway, all weather, hard surface	Unimproved road, fair or dry weather

 Interstate Route
 U. S. Route
 State Route



QUADRANGLE LOCATION

THIS MAP COMPLIES WITH NATIONAL MAP ACCURACY STANDARDS
FOR SALE BY U. S. GEOLOGICAL SURVEY, DENVER, COLORADO 80225, OR RESTON, VIRGINIA 22092
A FOLDER DESCRIBING TOPOGRAPHIC MAPS AND SYMBOLS IS AVAILABLE ON REQUEST

3198-441

USGS
Historical File
Topographic Division

EIDSON LAKE, TEX.
SE/4 HICO 15' QUADRANGLE
N3145-W5800/7.5
1956
PHOTOREVISED 1979
AMS 6347 1 SE-SERIES 9882

JUL 1 8 1979

1800