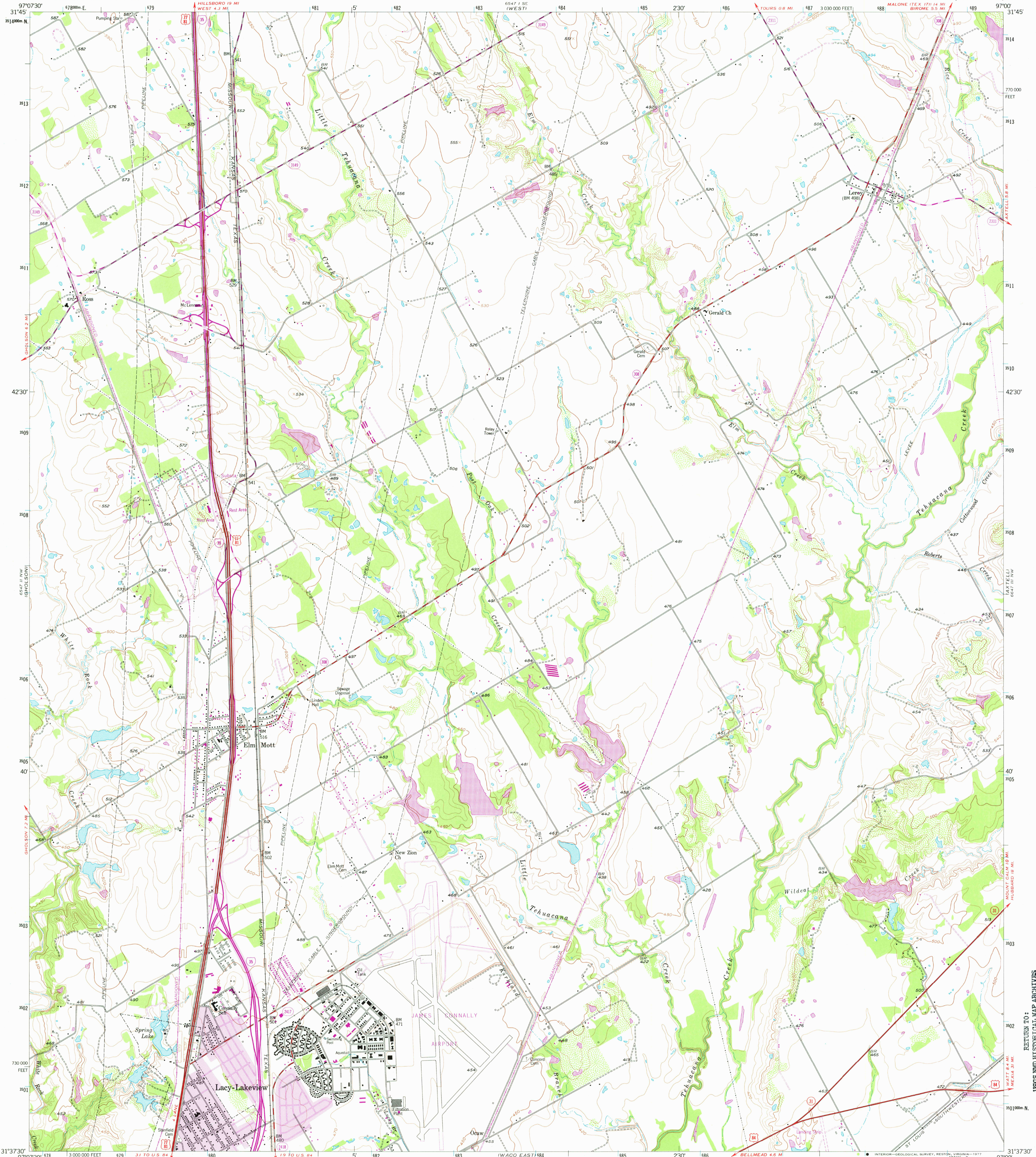


6547 11 SE (AQUILA)

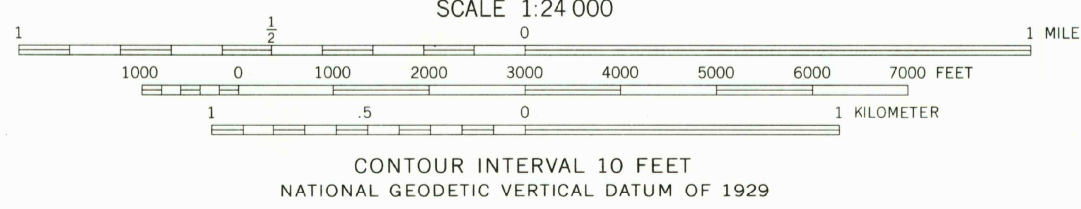
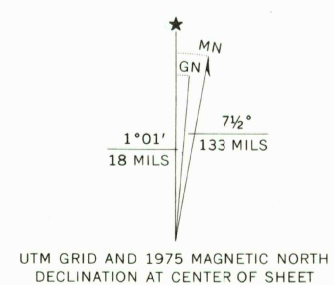
UNITED STATES  
DEPARTMENT OF THE INTERIOR  
GEOLOGICAL SURVEY

ELM MOTT QUADRANGLE  
TEXAS—MCLENNAN CO  
7.5 MINUTE SERIES (TOPOGRAPHIC)

6547 11 SW (PELOPE)



Maped, edited, and published by the Geological Survey  
Control by USGS and NOS/NOAA  
Topography from aerial photographs by ER-55 plotter  
Aerial photographs taken 1955. Field check 1957  
Polyconic projection. 1927 North American datum  
10,000-foot grid based on Texas coordinate system,  
central zone.  
1000-meter Universal Transverse Mercator grid ticks,  
zone 14, shown in blue  
Revisions shown in purple compiled from aerial photographs  
taken 1970 and 1975. This information not field checked  
Purple tint indicates extension of urban areas



ROAD CLASSIFICATION

Primary highway, hard surface	Light-duty road, hard or improved surface
Secondary highway, hard surface	Unimproved road
Interstate Route	U. S. Route
	State Route

THIS MAP COMPLIES WITH NATIONAL MAP ACCURACY STANDARDS  
FOR SALE BY U. S. GEOLOGICAL SURVEY, DENVER, COLORADO 80225, OR RESTON, VIRGINIA 22092  
A FOLDER DESCRIBING TOPOGRAPHIC MAPS AND SYMBOLS IS AVAILABLE ON REQUEST

USGS  
Historical File  
Topographic Division

ELM MOTT, TEX.  
N3137.5—W9700/7.5  
1957  
PHOTOREVISED 1970 AND 1975  
AMS 6547 11 NE—SERIES V882

AUG 0 1 1977

RETURN TO:  
USGS AND HISTORICAL MAP ARCHIVES