

6648 I SW  
(PALMER)

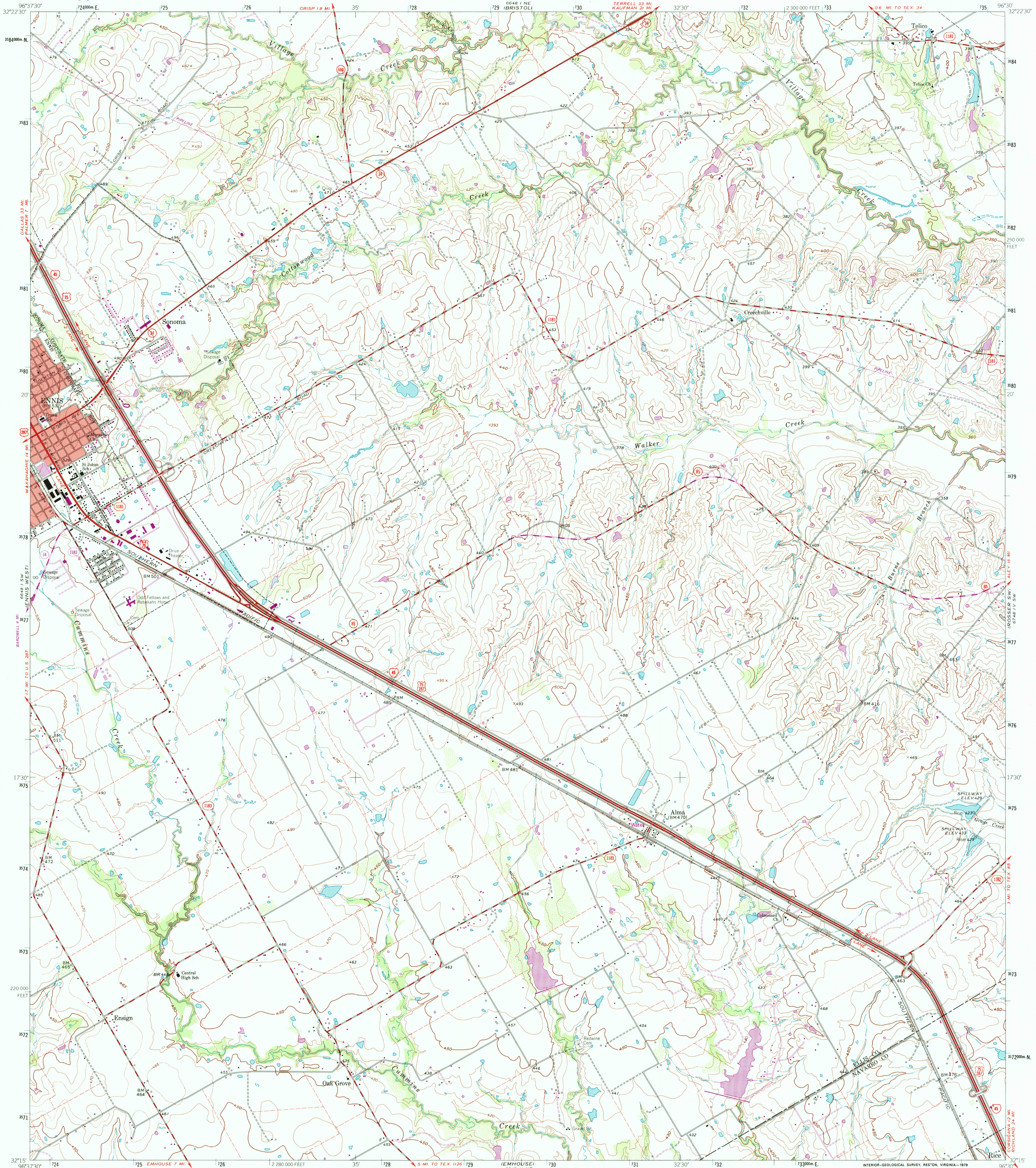


U.S. DEPARTMENT OF THE INTERIOR  
U.S. GEOLOGICAL SURVEY

STATE OF TEXAS  
TEXAS WATER COMMISSION

ENNIS EAST QUADRANGLE  
TEXAS  
7.5 MINUTE SERIES (TOPOGRAPHIC)

6748 I IV NW  
(ROSSER)



Mapped, edited, and published by the Geological Survey

Control by USGS and USC&GS

Topography by photogrammetric methods from aerial  
photographs taken 1960. Field checked 1962

Polyconic projection. 1927 North American datum.  
10,000-foot grid based on Texas coordinate system, north central zone  
1000-meter Universal Transverse Mercator grid ticks,  
zone 14, shown in blue

Red tint indicates areas in which only landmark buildings are shown

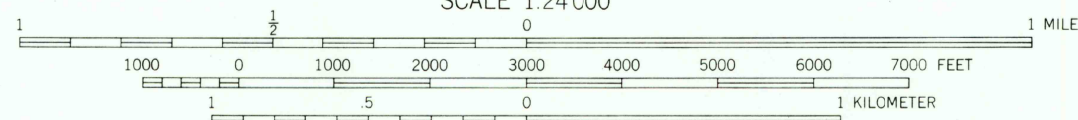
Fine red dashed lines indicate selected fence lines

Areas covered by dashed light blue pattern are subject  
to controlled inundation

Revisions shown in purple and woodland compiled from  
aerial photographs taken 1976 and other source data.  
This information not field checked. Map edited 1978



20%  
TOTAL RECOVERED FIBER



CONTOUR INTERVAL 10 FEET  
DOTTED LINES REPRESENT 5 FOOT CONTOURS  
NATIONAL GEODETIC VERTICAL DATUM OF 1929

THIS MAP COMPLIES WITH NATIONAL MAP ACCURACY STANDARDS  
FOR SALE BY U.S. GEOLOGICAL SURVEY, P.O. BOX 25286, DENVER, COLORADO 80225  
A FOLDER DESCRIBING TOPOGRAPHIC MAPS AND SYMBOLS IS AVAILABLE ON REQUEST



QUADRANGLE LOCATION

3296-241

RECEIVED

DEC 3 1 1999

USGS NHD  
HISTORICAL MAP ARCHIVES

ENNIS EAST, TEX.  
N3215-W9630/7.5

1962  
PHOTOREVISED 1978  
AMS 6648 I SE-SERIES V882

