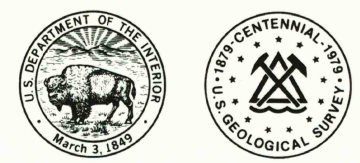


6438 IV SW (KINGSVILLE WEST)

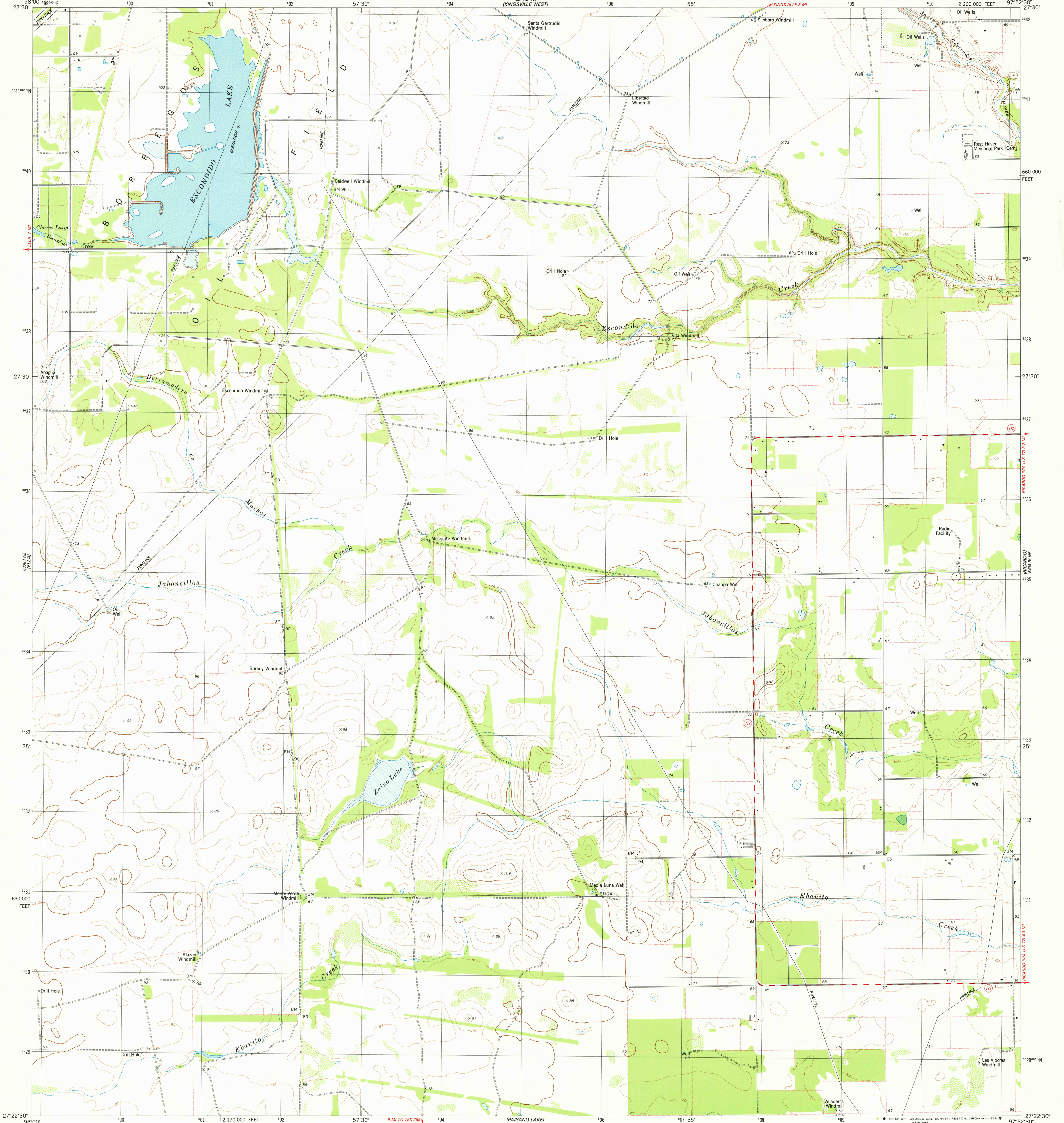
UNITED STATES
DEPARTMENT OF THE INTERIOR
GEOLOGICAL SURVEY



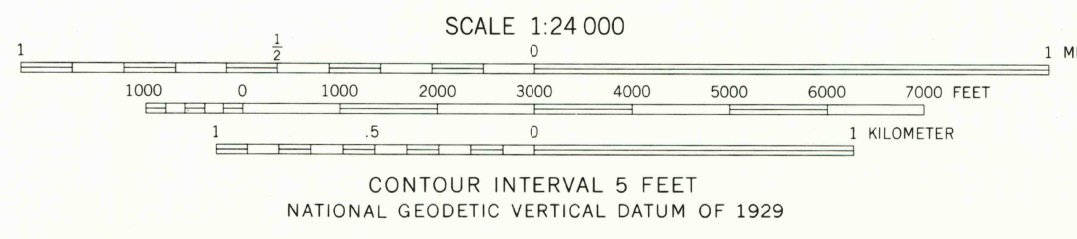
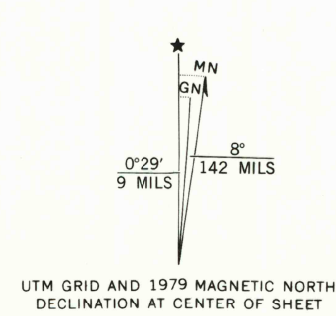
STATE OF TEXAS
TEXAS DEPARTMENT OF WATER RESOURCES

ESCONDIDO LAKE QUADRANGLE
TEXAS—KLEBERG CO.
7.5 MINUTE SERIES (TOPOGRAPHIC)
NW/4 RIVIERA 15' QUADRANGLE

6438 IV SE (KINGSVILLE EAST)



Mapped, edited, and published by the Geological Survey
Control by USGS and NOS/NOAA
Topography by photogrammetric methods from aerial photographs taken 1974. Field checked 1975. Map edited 1979
Projection and 10,000-foot grid ticks: Texas coordinate system, south zone (Lambert conformal conic) 1000-meter Universal Transverse Mercator grid, zone 14 1927 North American datum
Fine red dashed lines indicate selected fence lines



ROAD CLASSIFICATION
Primary highway, hard surface — Light-duty road, hard or improved surface
Secondary highway, hard surface — Unimproved road
Interstate Route — U.S. Route — State Route

THIS MAP COMPLIES WITH NATIONAL MAP ACCURACY STANDARDS
FOR SALE BY U. S. GEOLOGICAL SURVEY, DENVER, COLORADO 80225, OR RESTON, VIRGINIA 22092
A FOLDER DESCRIBING TOPOGRAPHIC MAPS AND SYMBOLS IS AVAILABLE ON REQUEST

2797-233

ESCONDIDO LAKE, TEX.

NW/4 RIVIERA 15' QUADRANGLE
N2722.5—W9752.5/7.5

1979

DMA 6438 IV NW—SERIES V882

USGS
Historical File
Topographic Division

NOV 19 1979