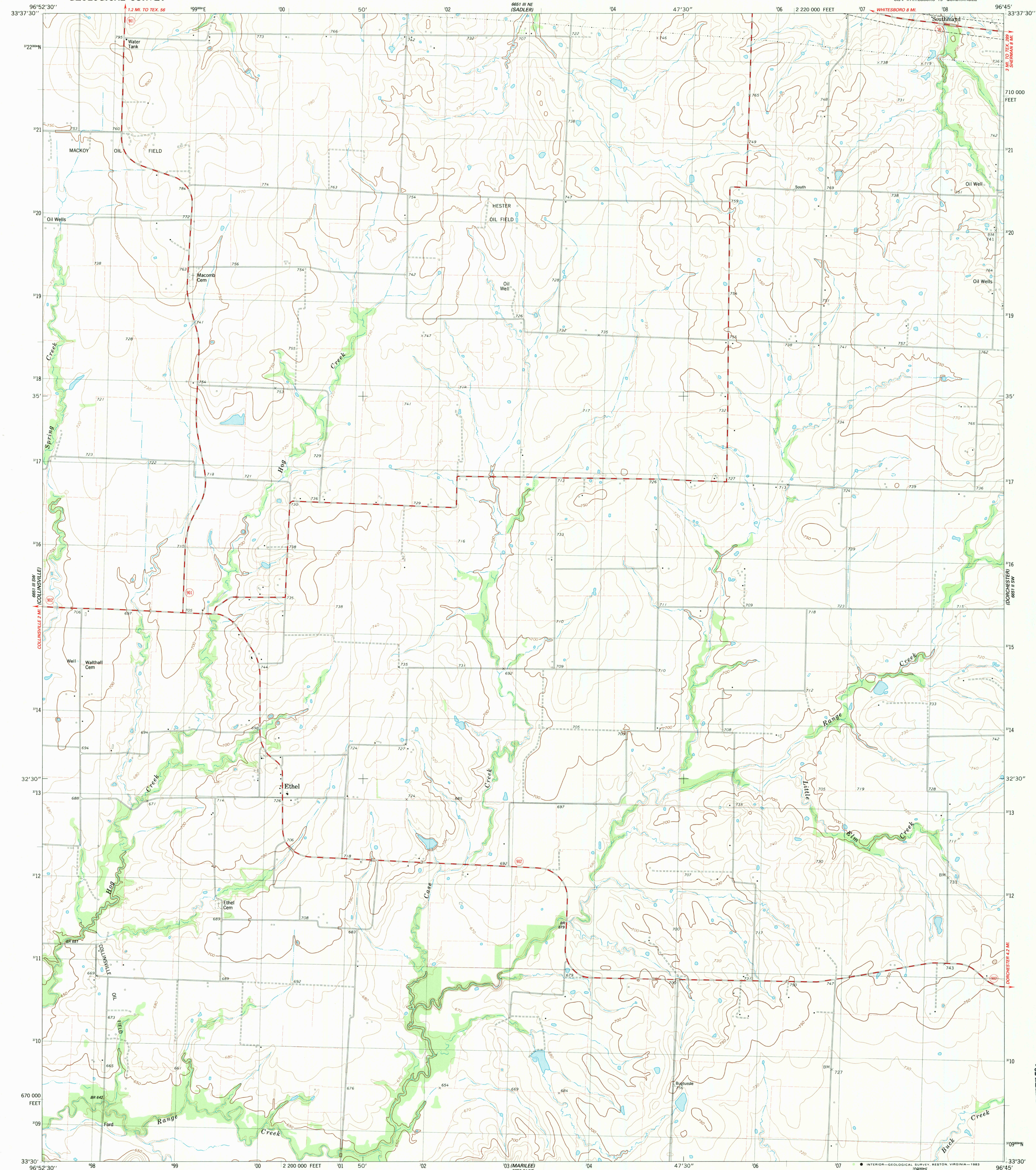


865 1/4 NW  
(WHITESBORO)

UNITED STATES  
DEPARTMENT OF THE INTERIOR  
GEOLOGICAL SURVEY

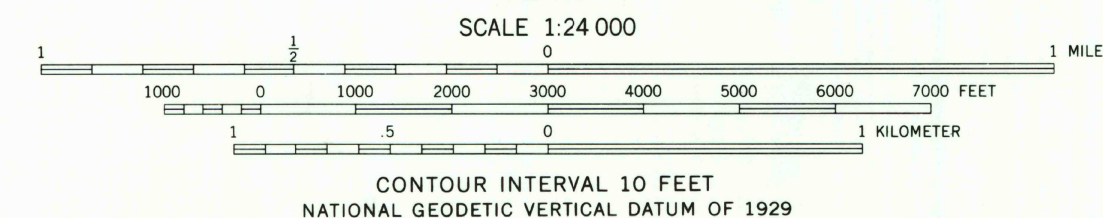
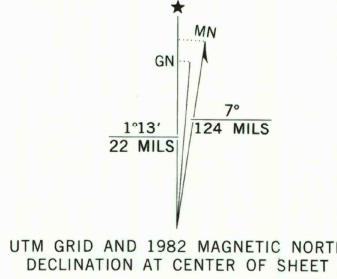
ETHEL QUADRANGLE  
TEXAS-GRAYSON CO.  
7.5 MINUTE SERIES (TOPOGRAPHIC)  
SE/4 WHITESBORO 15' QUADRANGLE

865 1/4 NW  
(SHERMAN NW)



PILOT POINT  
865 1/4 NW

Mapped, edited, and published by the Geological Survey  
Control by USGS and NOS/NOAA  
Topography by photogrammetric methods from aerial photographs  
taken 1976. Field checked 1978. Map edited 1982  
Projection and 10,000-foot grid ticks: Texas coordinate  
system, north central zone (Lambert conformal conic)  
1000-meter Universal Transverse Mercator grid, zone 14  
1927 North American Datum  
To place on the predicted North American Datum 1983  
move the projection lines 8 meters south and  
26 meters east as shown by dashed corner ticks  
Fine red dashed lines indicate selected fence and field lines where  
generally visible on aerial photographs. This information is unchecked



THIS MAP COMPLIES WITH NATIONAL MAP ACCURACY STANDARDS  
FOR SALE BY U.S. GEOLOGICAL SURVEY, DENVER, COLORADO 80225, OR RESTON, VIRGINIA 22092  
A FOLDER DESCRIBING TOPOGRAPHIC MAPS AND SYMBOLS IS AVAILABLE ON REQUEST



ROAD CLASSIFICATION  
Primary highway, hard surface  
Secondary highway, hard surface  
Interstate Route  
U. S. Route  
State Route  
Light-duty road, hard or improved surface  
Unimproved road

APR 19 1984

ETHEL, TEX.  
SE/4 WHITESBORO 15' QUADRANGLE  
N3330-W9645/7.5  
1982  
DMA 6651 III SE-SERIES V882

RETURN TO:  
USGS AND HISTORICAL MAP ARCHIVES

QUANTRO  
865 1/4 NW