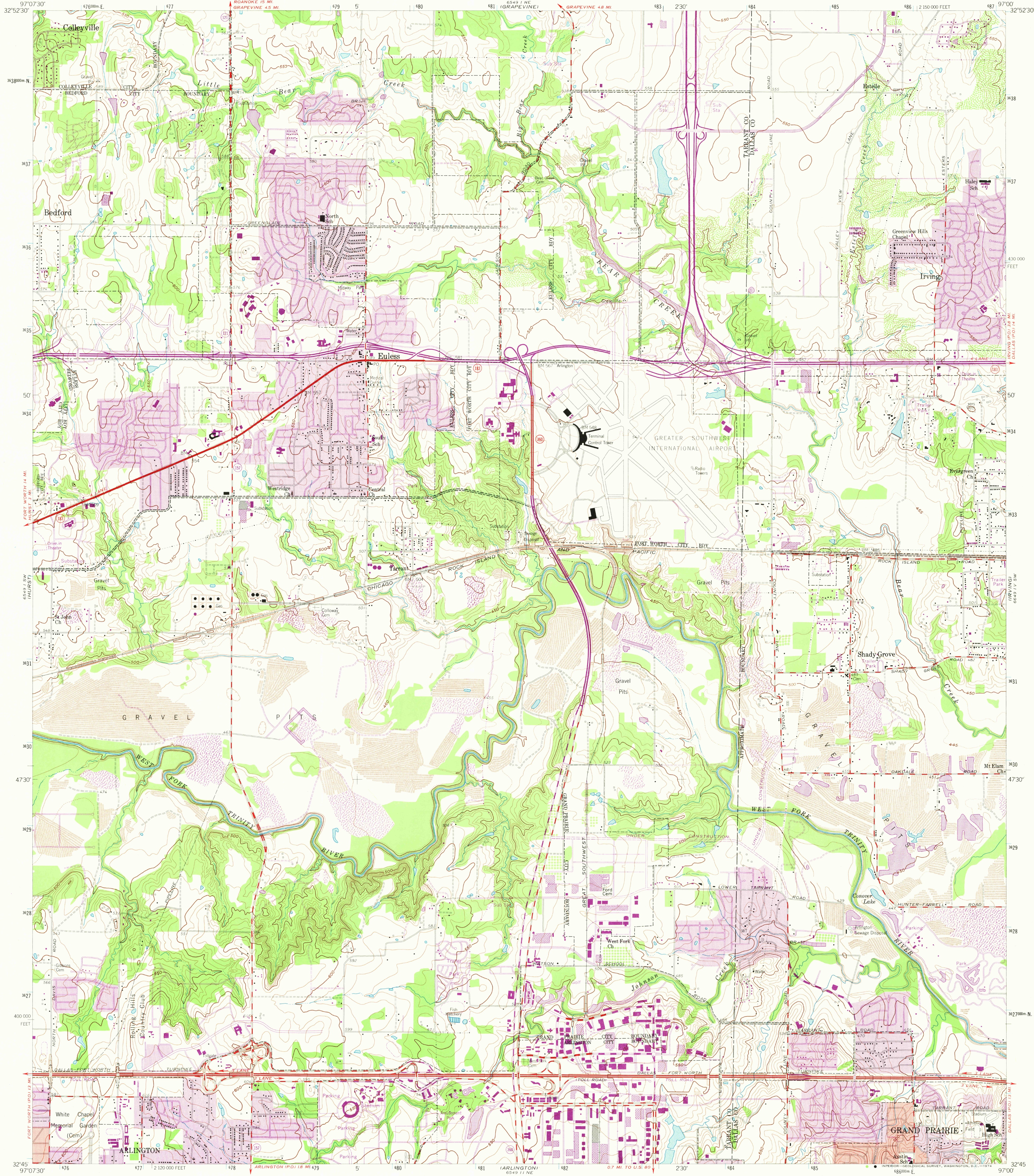


COLEYVILLE  
6549 11 NE

UNITED STATES  
DEPARTMENT OF THE INTERIOR  
GEOLOGICAL SURVEY

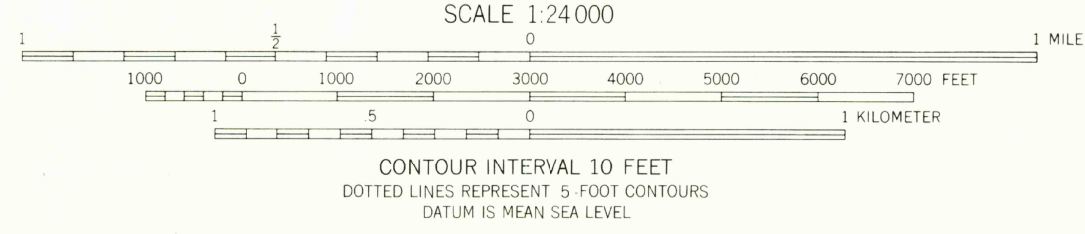
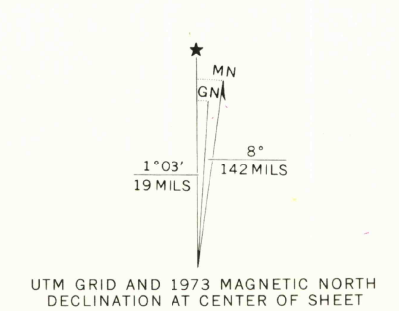
EULESS QUADRANGLE  
TEXAS  
7.5 MINUTE SERIES (TOPOGRAPHIC)  
SE/4 GRAPEVINE 15 QUADRANGLE  
1:250,000 FEET

6549 11 NW  
COLEYVILLE



KEENEDEAI  
6549 11 NW

Mapped, edited, and published by the Geological Survey  
Control by USGS and USC&GS  
Topography from aerial photographs by photogrammetric methods  
Aerial photographs taken 1956. Field check 1959  
Polyconic projection. 1927 North American datum  
10,000-foot grid based on Texas coordinate system,  
north central zone  
1000-meter Universal Transverse Mercator grid ticks,  
zone 14, shown in blue  
Red tint indicates areas in which only  
landmark buildings are shown  
Revisions shown in purple compiled from aerial photographs  
taken 1968 and 1973. This information not field checked  
Purple tint indicates extension of urban areas



THIS MAP COMPLIES WITH NATIONAL MAP ACCURACY STANDARDS  
FOR SALE BY U. S. GEOLOGICAL SURVEY, DENVER, COLORADO 80225, OR RESTON, VIRGINIA 22092  
A FOLDER DESCRIBING TOPOGRAPHIC MAPS AND SYMBOLS IS AVAILABLE ON REQUEST



ROAD CLASSIFICATION  
Heavy-duty ——— Light-duty ———  
Medium-duty ——— Unimproved dirt ———  
○ State Route

USGS  
Historical File  
Topographic Division

EULESS, TEX.  
SE/4 GRAPEVINE 15 QUADRANGLE  
N3245-W9700/7.5  
1959  
PHOTOREVISED 1968 AND 1973  
AMS 6549 1 SE-SERIES V882

COLEYVILLE  
6549 11 NW

4960  
JUN 25 1974