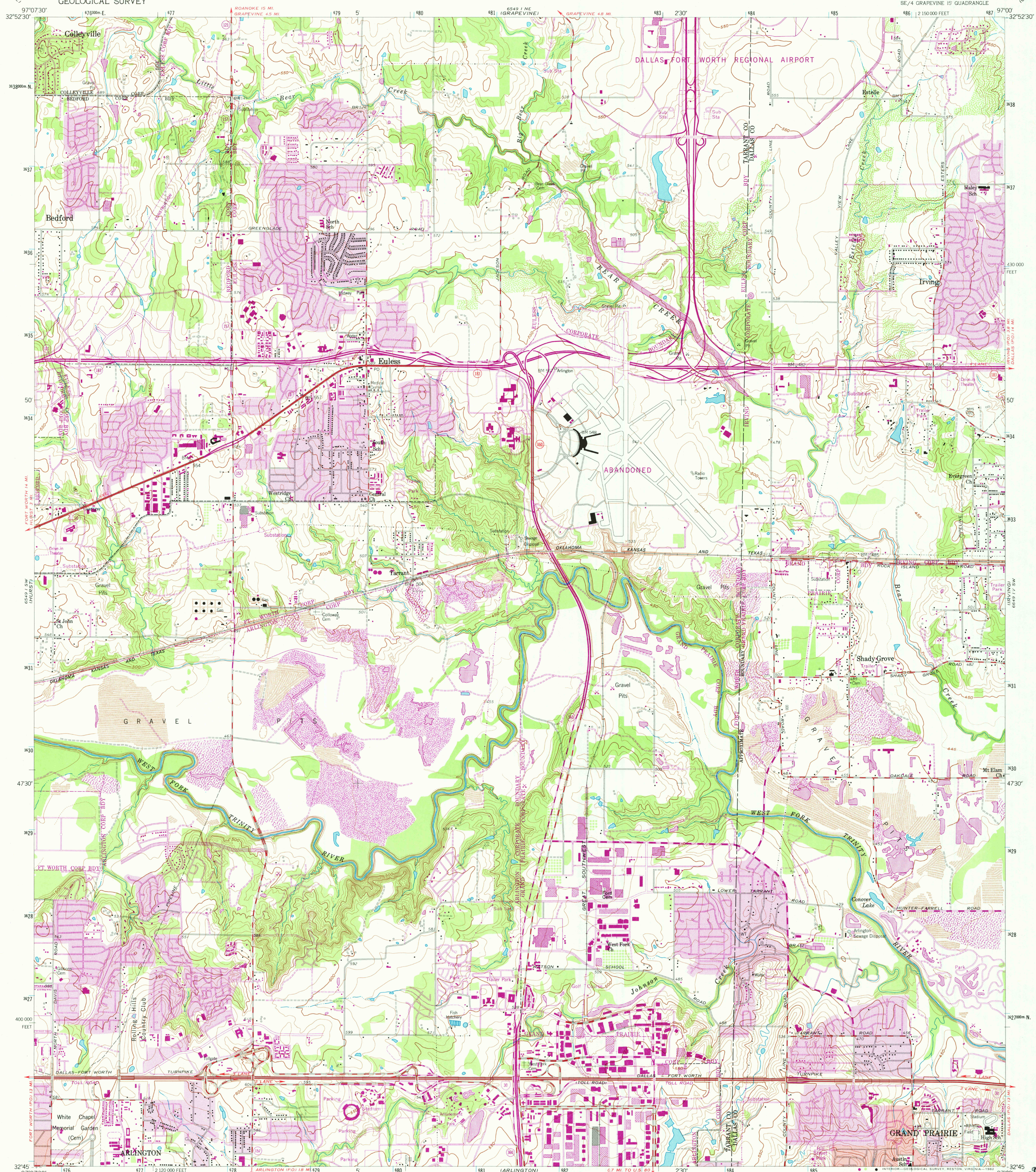


6549 15 MI
COLLEEVILLE

UNITED STATES
DEPARTMENT OF THE INTERIOR
GEOLOGICAL SURVEY

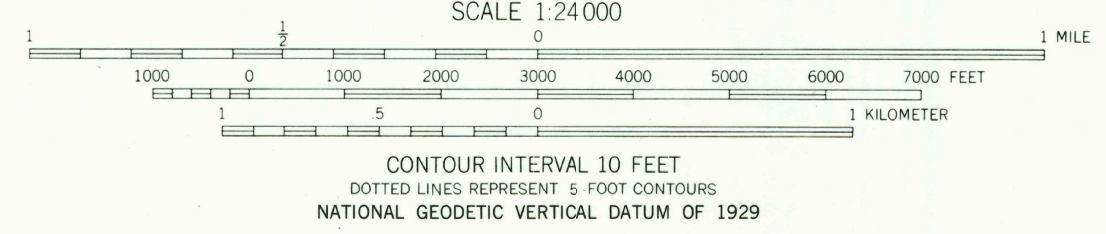
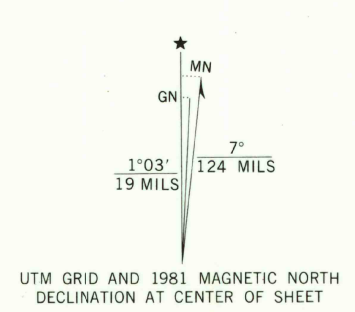
EULESS QUADRANGLE
TEXAS
7.5 MINUTE SERIES (TOPOGRAPHIC)
SE/4 GRAPEVINE 15' QUADRANGLE

6549 15 MI
CARROLLTON



6549 15 MI
COLLEEVILLE

Mapped, edited, and published by the Geological Survey
Control by USGS and NOS/NOAA
Topography by photogrammetric methods from aerial photographs
Aerial photographs taken 1956. Field checked 1959
Polyconic projection. 10,000-foot grid ticks based on Texas coordinate system,
north central zone. 1000-meter Universal Transverse Mercator grid ticks,
zone 14, shown in blue. 1927 North American Datum
To place on the predicted North American Datum 1983 move the projection lines
10 meters south and 27 meters east as shown by dashed corner ticks
Red tint indicates area in which only landmark buildings are shown
Revisions shown in purple and woodland compiled from
aerial photographs taken 1978 and other sources. This
information not field checked. Map edited 1981
Purple tint indicates extension of urban areas



ROAD CLASSIFICATION
Primary highway, all weather, hard surface
Secondary highway, all weather, hard surface
Light-duty road, all weather, improved surface
Unimproved road, fair or poor, weather
Interstate Route
U. S. Route
State Route
EULESS, TEX.
SE/4 GRAPEVINE 15' QUADRANGLE
N3245-W9700/7.5
1959
PHOTOREVISED 1981
DMA 6549 1 SE-SERIES V882

THIS MAP COMPLIES WITH NATIONAL MAP ACCURACY STANDARDS
FOR SALE BY U. S. GEOLOGICAL SURVEY, DENVER, COLORADO 80225, OR RESTON, VIRGINIA 22092
A FOLDER DESCRIBING TOPOGRAPHIC MAPS AND SYMBOLS IS AVAILABLE ON REQUEST

3297-441

RETURN TO:
USGS AND HISTORICAL MAP ARCHIVES