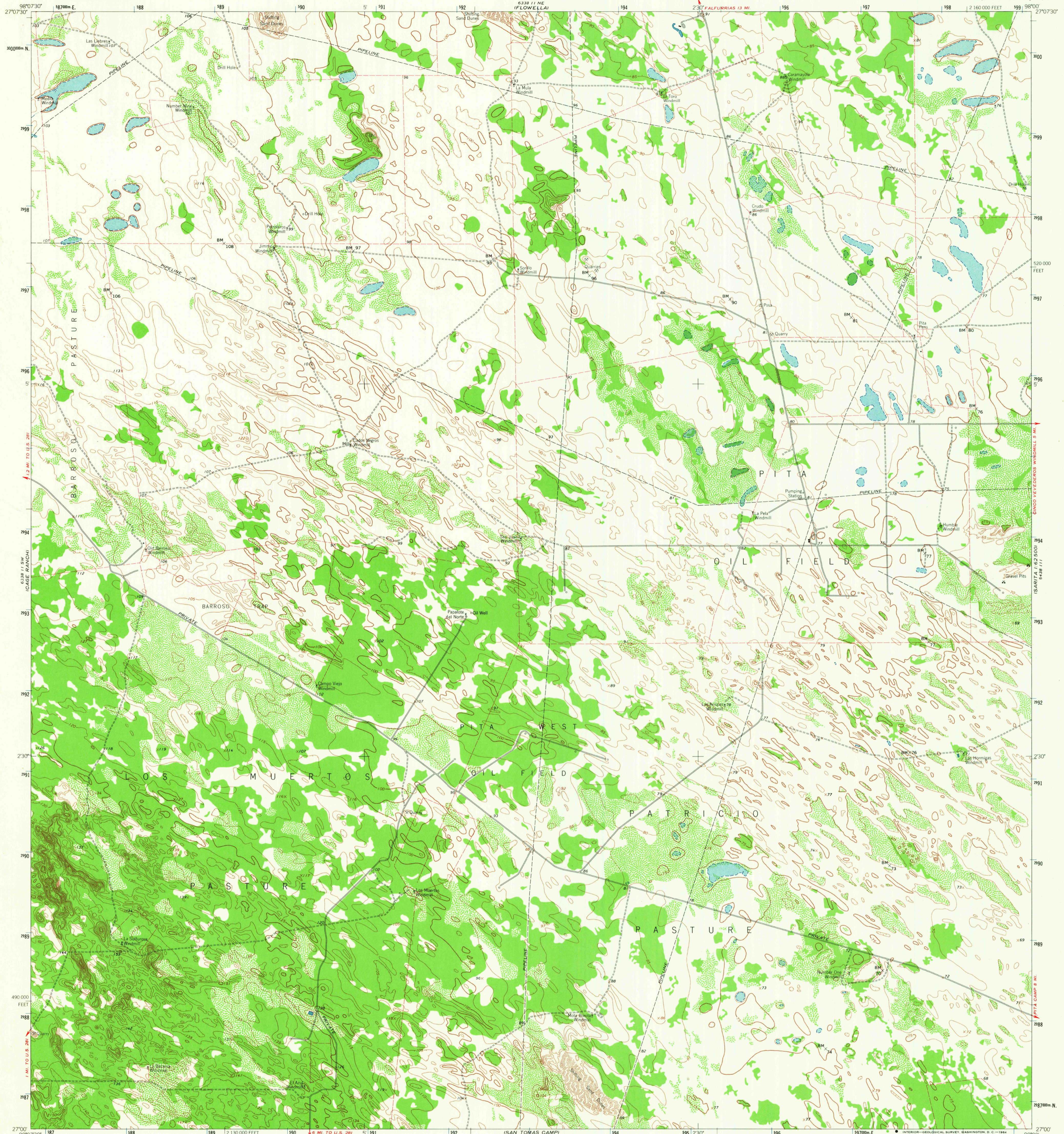


6338 11 SW  
(FALFURRIAS)

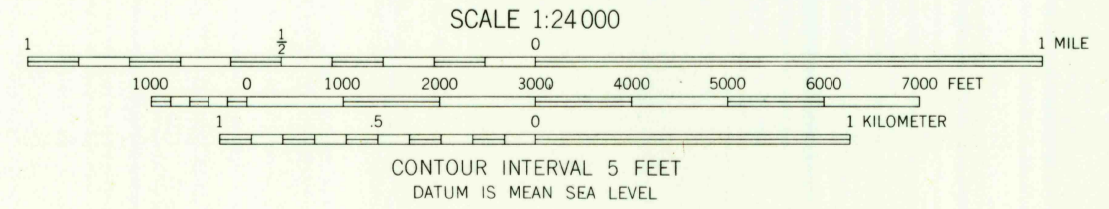
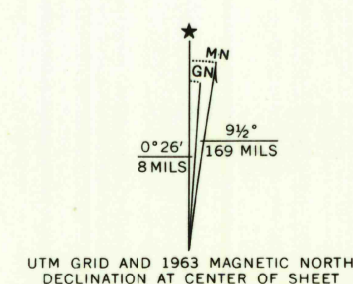
UNITED STATES  
DEPARTMENT OF THE INTERIOR  
GEOLOGICAL SURVEY

FALFURRIAS SE QUADRANGLE  
TEXAS-BROOKS CO.  
7.5 MINUTE SERIES (TOPOGRAPHIC)

6338 11 NE  
(LOWELL)



Mapped, edited, and published by the Geological Survey  
Control by USGS and USC&GS  
Topography by photogrammetric methods from aerial  
photographs taken 1961 and planetable surveys 1963  
Polyconic projection 1927 North American datum  
10,000 foot grid based on Texas coordinate system, south zone  
1000 meter Universal Transverse Mercator grid ticks,  
zone 14, shown in blue  
Fine red dashed lines indicate selected fence lines



U.S.G.S.  
FILE COPY  
TOPOGRAPHIC DIVISION

ROAD CLASSIFICATION  
Light-duty ——— Unimproved dirt - - - - -

FALFURRIAS SE, TEX.  
N2700-W9800/7.5

DEC 1 1964

1963  
AMS 6338 11 SE-SERIES 1982

THIS MAP COMPLIES WITH NATIONAL MAP ACCURACY STANDARDS  
FOR SALE BY U.S. GEOLOGICAL SURVEY, DENVER 25, COLORADO OR WASHINGTON 25, D. C.  
A FOLDER DESCRIBING TOPOGRAPHIC MAPS AND SYMBOLS IS AVAILABLE ON REQUEST