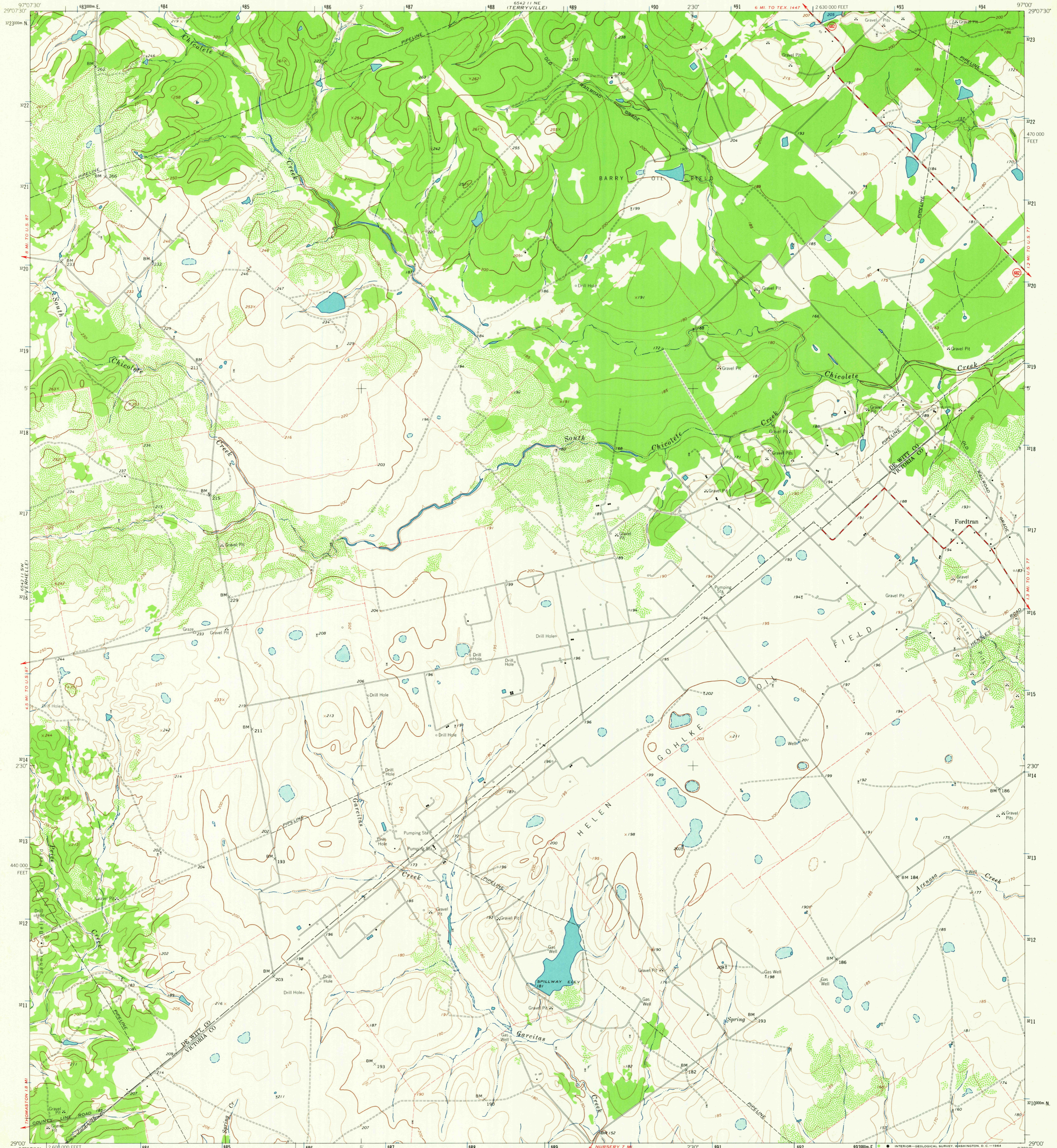


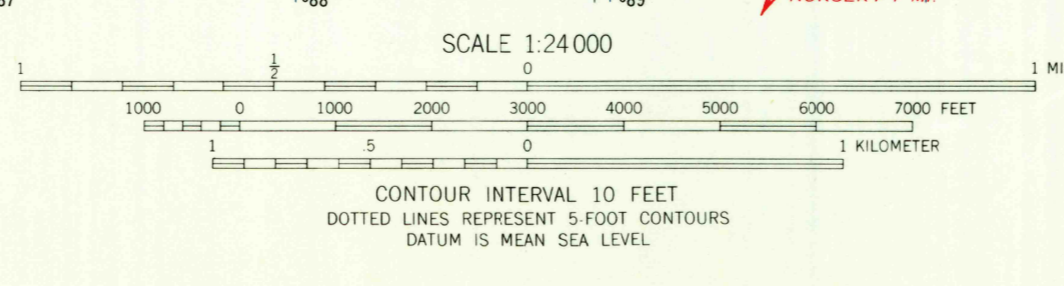
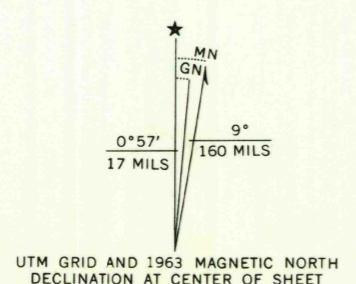
6542 11 NW
(6049)

UNITED STATES
DEPARTMENT OF THE INTERIOR
GEOLOGICAL SURVEY

FORDTRAN QUADRANGLE
TEXAS
7.5 MINUTE SERIES (TOPOGRAPHIC)



Mapped, edited, and published by the Geological Survey
Control by USGS and USC&GS
Topography by photogrammetric methods from aerial
photographs taken 1961. Field checked 1963
Polyconic projection 1927 North American datum
10,000-foot grid based on Texas coordinate system, south central zone
1000 meter Universal Transverse Mercator grid ticks,
zone 14, shown in blue
Fine red dashed lines indicate selected fence lines



ROAD CLASSIFICATION	
Medium-duty	Light-duty
Unimproved dirt	State Route

SEP 2 1964
2765

THIS MAP COMPLIES WITH NATIONAL MAP ACCURACY STANDARDS
FOR SALE BY U.S. GEOLOGICAL SURVEY, DENVER 25, COLORADO OR WASHINGTON 25, D.C.
A FOLDER DESCRIBING TOPOGRAPHIC MAPS AND SYMBOLS IS AVAILABLE ON REQUEST

U.S.G.S.
FILE COPY
TOPOGRAPHIC DIVISION
FORDTRAN, TEX.
N2900-W9700/7.5
1963
AMS 6542 11 SE-SERIES V882